



THE AQUAPULSE SYSTEM

**RGIP**

AREA : SARDINIA - ASINARA

PROJECT : ZONE "E"

**WESTERN**  
**GEOPHYSICAL**  
 DIVISION OF LITTON INDUSTRIES  
 MILAN DIGITAL CENTER

**RECORDING DATA**

FABRY NO. 62  
 ENERGY SOURCE AQUAPULSE  
 FILTER 10-80 HZ  
 CABLE 1600 m  
 GEOPHONES 32 CRYSTAL ELEMENT  
 TAPERED ARRAY  
 LEAD IN 650 FT.  
 AMPLIFIER REDCOR BINARY GAIN  
 CHARGE SIZE 4 GUNS POP  
 DATE SHOT APRIL 1968

**PROCESSING INFORMATION**

SAMPLE RATE 4 ms

**DECONVOLUTION**

**DECONVOLVED BEFORE STACK**

AUTO CORR. INT  
 MAX APERTURE 0 - 920 ms  
 TIME ZONE 0 - 4 sec  
 ITERATIONS 4

**TIME VARIANT FILTER**

**TIME ZONE Hz DB OCT Hz DB OCT**

LC	HC
0.00 - 0.37	25 18 50 12
0.37 - 0.55	15 12 45 12
0.55 - 1.05	10 12 40 12
1.05 - 1.60	10 12 35 12
1.60 - 4.00	5 6 30 6

**PROCESSING SEQUENCE**

- 1) EDIT + (SUM 3 POPS)
- 2) DECONVOLVED BEFORE STACK
- 3) NORMAL MOVE OUT
- 4) STACK (200%)
- 5) TV-FILTER
- 6) PLAYBACK (UN-FILTERED)

REEL NO 7 2 5 90  
 DATE JULY 1968

LINE : ES - 228

S.P. 1 to S.P. 79

DATUM PLANE : SEA LEVEL

SOUTH



M-MESA 5022

VELOCITY CHANGE

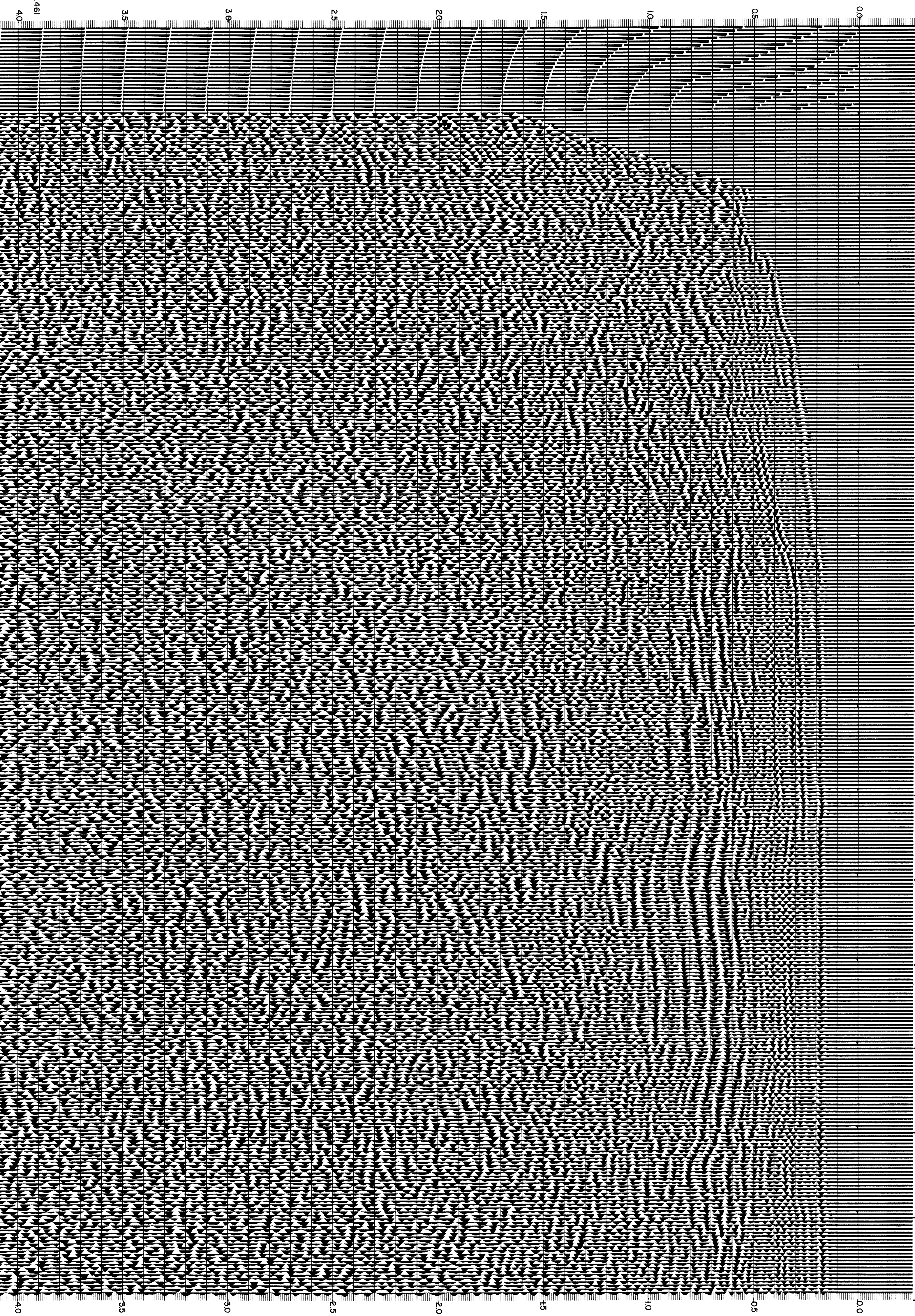
M-MESA 5021

M-MESA 5014

WATER DEPTH IN METRES

1 7 13 19 25 31 37 43 49 55 61 67 73 79

251 183 146 104 84 80 77 69 68 62 62 59



CS2461

40

30

30

25

20

15

10

05

00

40

35

30

25

20

15

10

05

00