



THE AQUAPULSE SYSTEM



AREA: SARDINIA - ASINARA

PROSPECT: ZONE "E"



MILAN DIGITAL CENTER

LINE: ES-226

S.P. 171 to S.P. 249

DATUM PLANE: SEA LEVEL

VELOCITY CHANGE

M-MESA 5020

M-MESA 5015

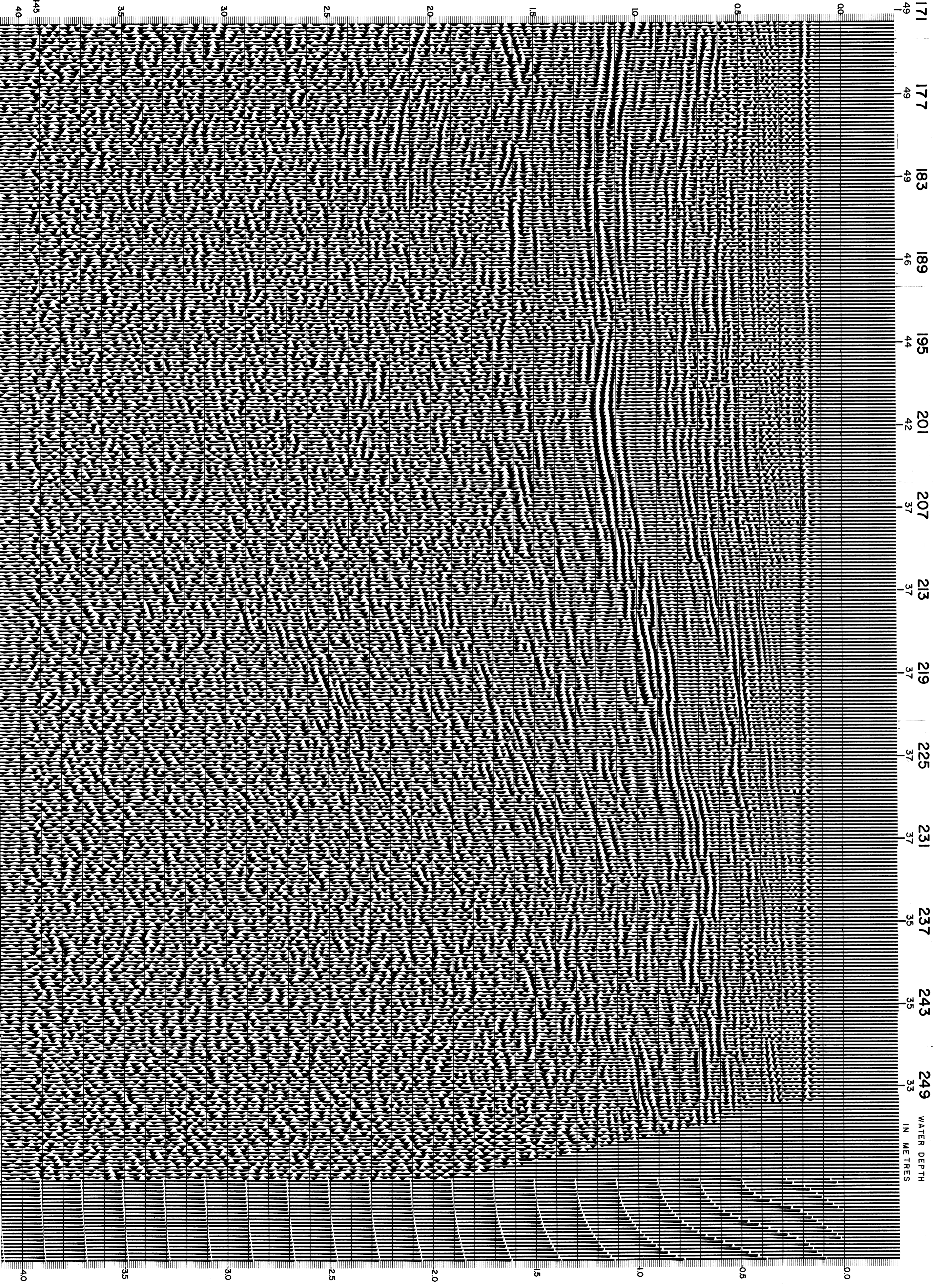
VELOCITY CHANGE

M-MESA 5020

INTERSECTION  
LINE S.P.  
ES-125 310

NORTH

<b>RECORDING DATA</b>		<b>PROCESSING INFORMATION</b>		<b>PROCESSING SEQUENCE</b>	
PART NO. 62	AQUAPULSE	SAMPLE RATE 2 ms		1) EDIT (SUM 3 PGS)	
ENERGY SOURCE	10.80 KHZ	TIME ZONE		2) DECONVOLVED BEFORE STACK	
FILTER	1600 m	LC	HC	3) NORMAL MOVE OUT	
CABLE	GEOPHONES 32 CRYSTAL ELEMENT	0.00 - 0.40	25	18	50
GEOPHONES 32 CRYSTAL ELEMENT	TAPERED ARRAY	0.40 - 0.85	15	12	45
LEAD IN 690 FT		0.85 - 2.00	10	12	40
AMPLIFIER RECORDER BINARY GAIN		2.00 - 4.00	10	12	35
CHARGE SIZE 4 GUNS POP					12
DATE SHOT APRIL 1968					
<b>DECONVOLUTION</b>		<b>PROCESSED SEQUENCE</b>			
DECONVOLVED BEFORE STACK		4) STACK (200%)			
AUTO CORRECT	TIME VARIANT	5) TV-FILTER (UNFILTERED)			
MAX. APERTURE	0.360 ms	6) PLAYBACK (UNFILTERED)			
TIME ZONE	0 - 4 sec	REFL. NO. 72536			
ITERATIONS	4	DATE JULY 1968			



CS2445

40

35

30

25

20

15

10

05

00

49

49

49

49

46

44

42

37

37

37

37

35

35

35

33

33

40

35

30

25

20

15

10

05

00