



THE AQUAPULSE SYSTEM

LINE: ES-226

S.P. 010D to S.P. 75

DATUM PLANE: SEA LEVEL

VELOCITY CHANGE

M-MESA 5022

M-MESA 5019

VELOCITY CHANGE

M-MESA 5011

VELOCITY CHANGE

M-MESA 5011

VELOCITY CHANGE

M-MESA 5011

010D 04 3 9 15 21 27 33 39 45 51 57 63 69 75

>512

412

375

311

317

317

130

119

121

77

91

84

86

82

82

WATER DEPTH
IN METRES

AGIP

AREA: SARDINIA-ASINARA

PROSPECT: ZONE "E"

WESTERN
GEOPHYSICAL
DIVISION OF LITTON INDUSTRIES
MILAN DIGITAL CENTER

RECORDING DATA

PARTY NO. 62
ENERGY SOURCE AQUAPULSE
FILTER 10-80 HZ
CABLE 1600 m
GEOPHONES 32 CRYSTAL ELEMENT
TAPERED ARRAY
LEAD IN 550 FT
AMPLIFIER RECOR BINARY GAIN
CHARGE SIZE 4 GUNS POP
DATE SHOT APRIL 1968

PROCESSING INFORMATION

SAMPLE RATE 2 ms

DECONVOLUTION

DECONVOLVED BEFORE STACK

AUTO CORR INT TIME VARIANT
MAX APERTURE 0-360 ms
TIME ZONE 0-4 sec
ITERATIONS 4

TIME VARIANT FILTER

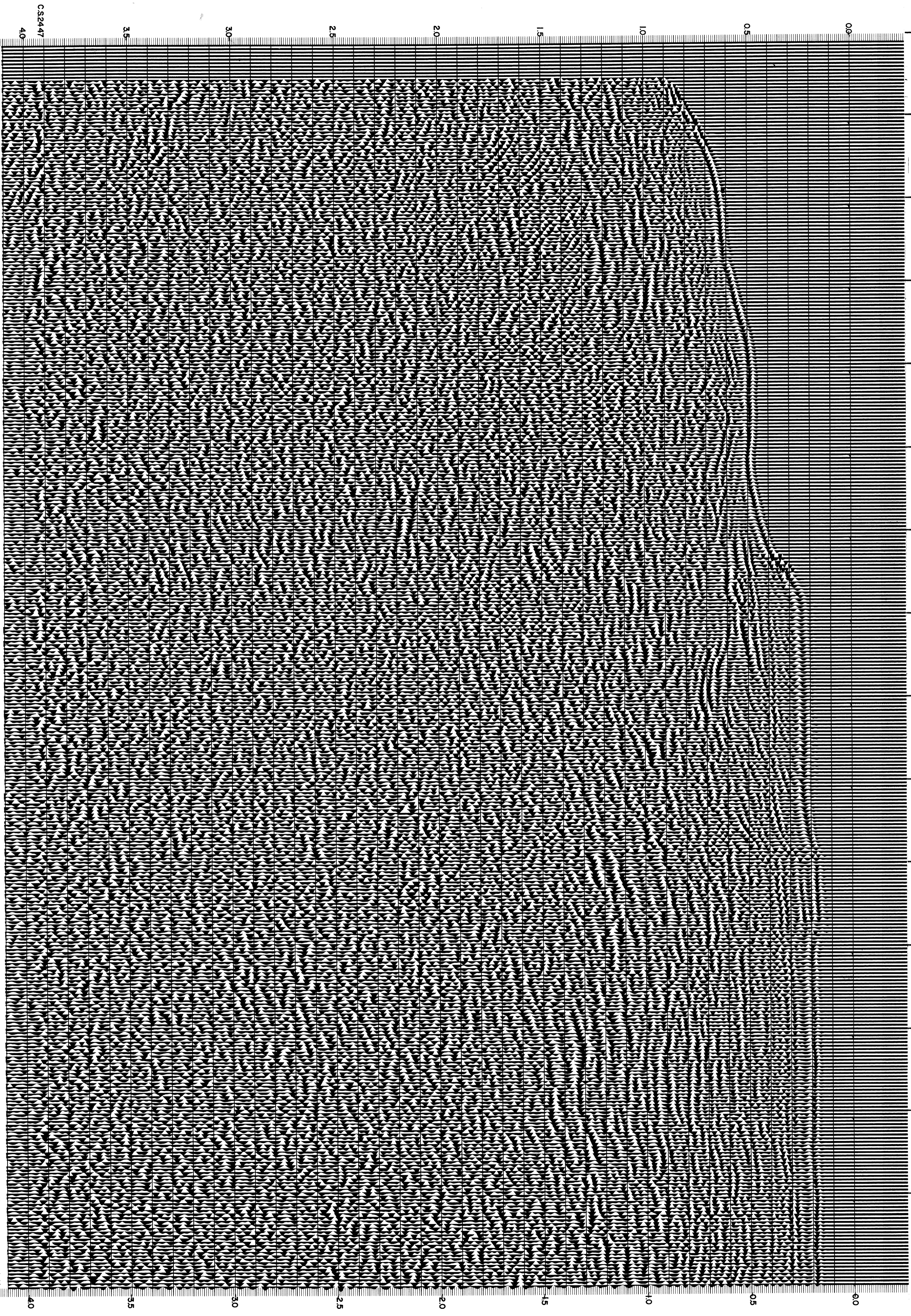
TIME ZONE	LC	HC
0.00 - 0.40	25	18
0.40 - 0.85	15	12
0.85 - 2.00	10	12
2.00 - 4.00	10	12

PROCESSING SEQUENCE

- 1) EDIT - (SUM 3 POPS)
- 2) DECONVOLVED BEFORE STACK
- 3) NORMAL MOVE OUT
- 4) STACK (200%)
- 5) TV-FILTER
- 6) PLAYBACK (UN-FILTERED)

REEL NO. 72536
DATE JULY 1968

NORTH



CS2447

4.0

3.5

3.0

2.5

2.0

1.5

1.0

0.5

0.0

4.0

3.5

3.0

2.5

2.0

1.5

1.0

0.5

0.0