



THE AQUAPULSE SYSTEM

LINE: ES-224

S.P. 97 to S.P. 187D

DATUM PLANE: SEA LEVEL

SOUTH

VELOCITY CHANGE

M-MESA S011

M-MESA S020

INTERSECTION  
LINE ES-125  
S.P. 246



AREA: SARDINIA - ASINARA

PROSPECT: ZONE "E"

WESTERN  
GEOPHYSICAL  
MILAN DIGITAL CENTER

RECORDING DATA

PARTY NO. 62  
ENERGY SOURCE AQUAPULSE  
FILTER 10-80 HZ  
CABLE 1600 m  
GEOPHONES 32 CRYSTAL ELEMENT  
TAPERED ARRAY  
LEAD IN 650 FT  
AMPLIFIER RECOR. BINARY GAIN  
CHARGE SIZE 4 GUNS POP  
DATE SHOT APRIL 1988

PROCESSING

SAMPLE RATE 2 ms

DECONVOLUTION

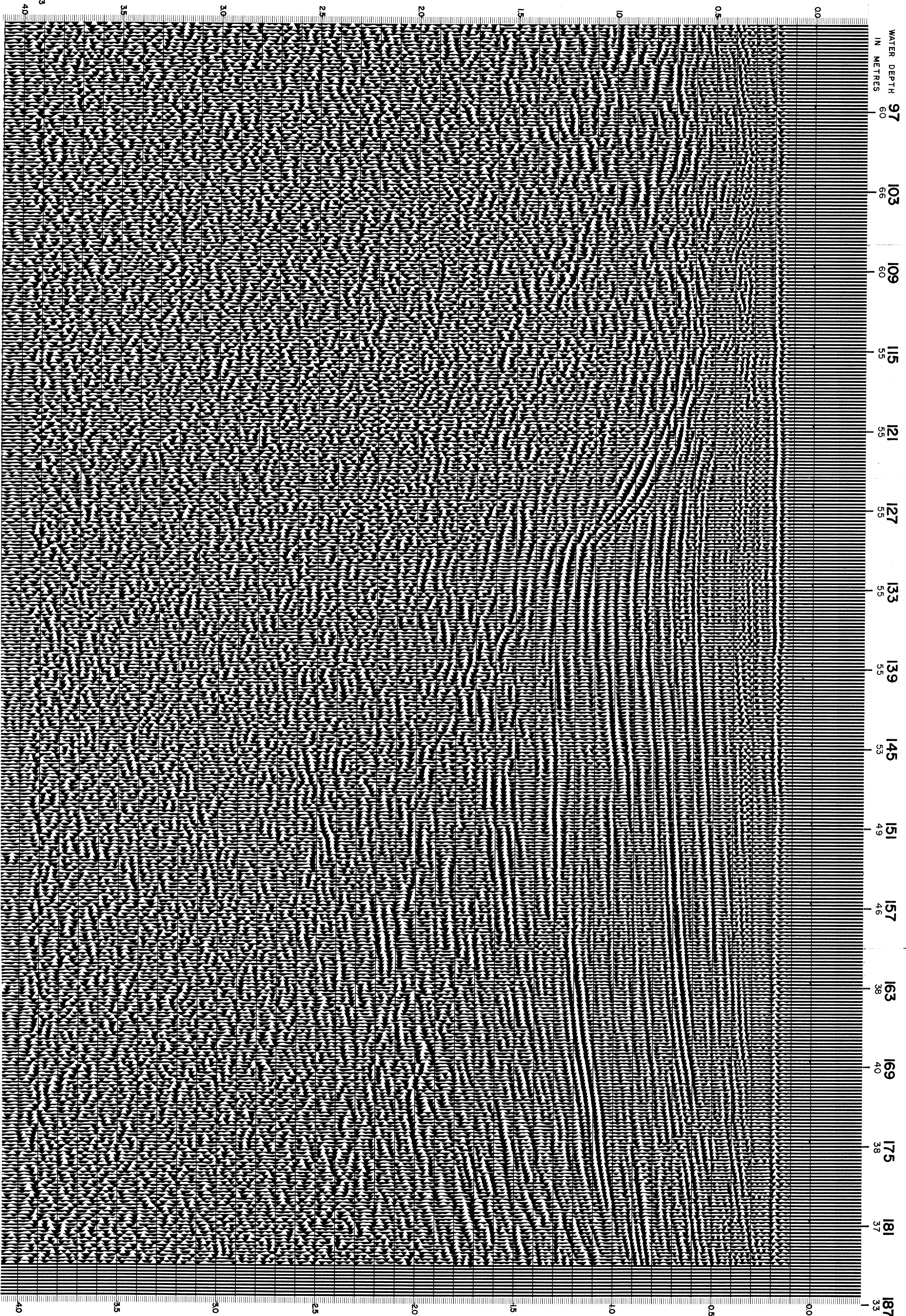
TIME VARIANT FILTER

DECONVOLVED BEFORE STACK  
AUTO CORR INT TIME VARIANT  
MAX APERTURE 0-600 ms  
TIME ZONE 0-4 sec  
ITERATIONS 4

TIME ZONE Hz dB OCT Hz dB OCT  
0.00 - 0.40 29 18 50 12  
0.40 - 0.75 15 12 45 12  
0.75 - 1.70 10 12 40 12  
1.70 - 4.00 10 12 35 12

PROCESSING SEQUENCE

- 1) EDIT - (SUM 3 POPS)
  - 2) DECONVOLVED BEFORE STACK
  - 3) NORMAL MOVE OUT
  - 4) STACK 1200'6
  - 5) TV-FILTER
  - 6) PLAYBACK (UNFILTERED)
- REFL NO 71997  
DATE JULY 1988



CS 2433

40

35

30

25

20

15

10

0.5

0.0

WATER DEPTH 97  
IN METRES 60

103 66

109 60

115 55

121 55

127 55

133 55

139 55

145 53

151 49

157 46

163 38

169 40

175 38

181 37

187D 33

35

30

25

20

15

10

0.5

0.0

40