



THE AQUAPULSE SYSTEM

LINE: ES-224

S.P. 1 to S.P. 91

DATUM PLANE: SEA LEVEL

SOUTH



M-MESA 5506

VELOCITY CHANGE

M-MESA 5021

VELOCITY CHANGE

M-MESA 5011

WATER DEPTH
IN METRES

1 333 7 338 13 344 19 329 25 251 31 208 37 165 43 102 49 97 55 86 61 80 67 77 73 75 79 75 85 71 91 64

AGIP

AREA: SARDINIA - ASINARA

PROSPECT: ZONE "E"

WESTERN
GEOPHYSICAL
MILAN DIGITAL CENTER

RECORDING DATA

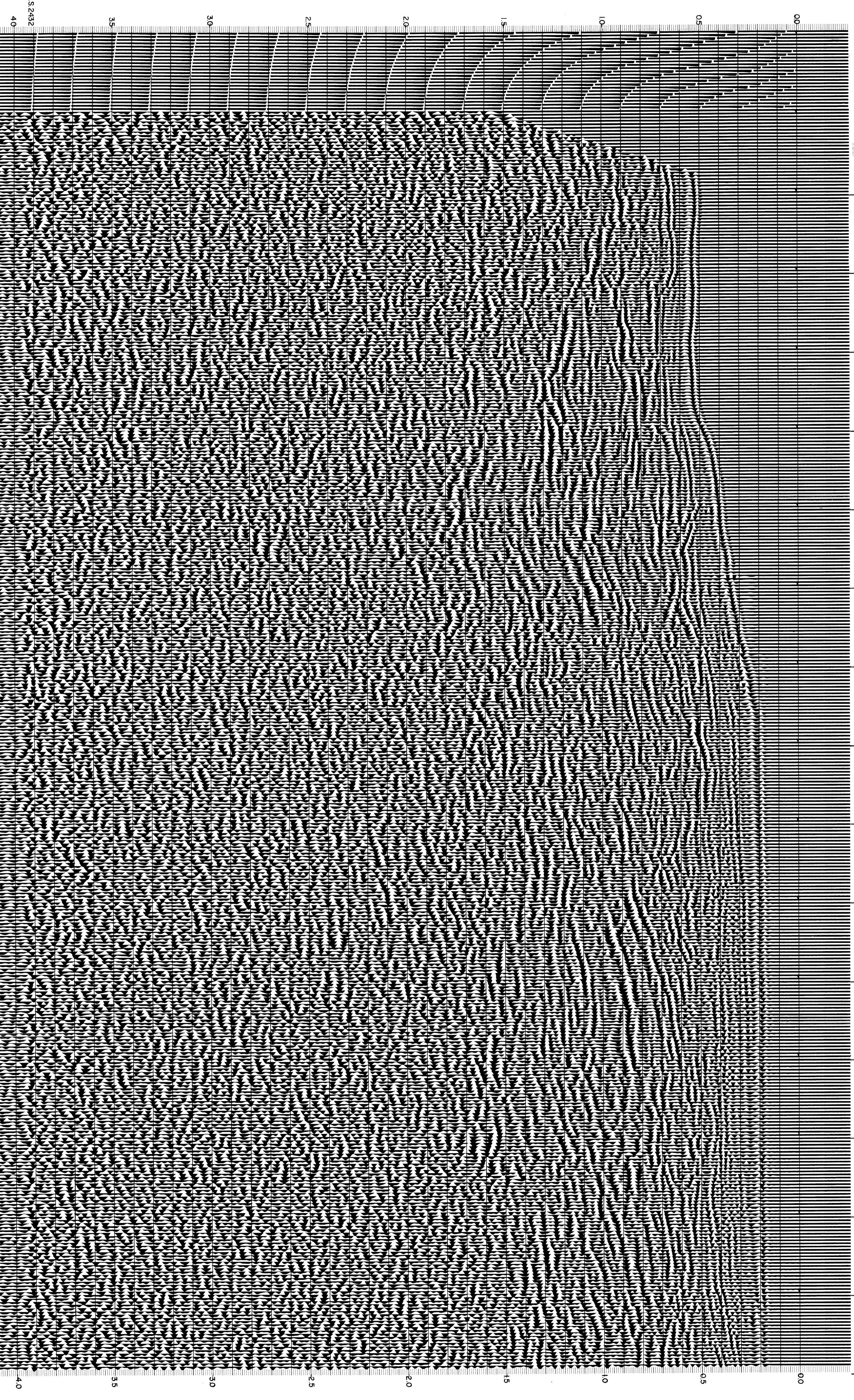
FACILITY NO. 62
ENERGY SOURCE AQUAPULSE
FILTER 10-80 HZ
CABLE IROCOM
GEOPHONES 32 CRYSTAL ELEMENT
TAPERED ARRAY
LEAD IN 650 FT
AMPLIFIER-RECORD BINARY GAIN
CHARGE SIZE 4 GUNS POP
DATE SHOT APRIL 1988

PROCESSING INFORMATION

DECONVOLUTION
DECONVOLVED BEFORE STACK
TIME VARIANT FILTER
TIME ZONE Hz DB OCT Hz DB OCT
L.C. H.C.
0.00 - 0.40 25 18 50 12
0.40 - 0.75 15 12 45 12
0.75 - 1.70 10 12 40 12
1.70 - 4.00 10 12 35 12

PROCESSING SEQUENCE

1) EDIT (ISLM 3 POS)
2) DECONVOLVED BEFORE STACK
3) NORMAL MOVE OUT
4) STACK (200%)
5) TV FILTER
6) PLAYBACK (UNFILTERED)
REFL. NO. 71997
DATE JUNE 1988



CS-2432
40
35
30
25
20
15
10
05
00
40
35
30
25
20
15
10
05
00