



THE AQUAPULSE SYSTEM

LINE: ES-129

S.P. 351 to S.P. 465

DATUM PLANE: SEA LEVEL



MARE: SARDINIA - ORISTANO PROSPECT: ZONE "E"



WESTERN GEOPHYSICAL DIVISION OF OILFIELD INDUSTRIES MILAN DIGITAL CENTER

RECORDING DATA		PROCESSING INFORMATION		PROCESSING SEQUENCE	
PARTY NO. 82	ENERGY SOURCE AQUAPULSE	SAMPLE RATE 2 ms		1) EDIT - (SUM 3 POPS)	
ENERGY SOURCE AQUAPULSE	10-80 UHZ	DECONVOLUTION		2) DECONVOLVED BEFORE STACK	
LEAD IN 1600 m	GEOPHONES 32 CRYSTAL ELEMENT	DECONVOLVED BEFORE STACK		3) NORMAL MOVE OUT	
AMPLIFIER RECORD BINARY GAIN	TAPERED ARRAY	TIME VARIANT FILTER		4) STACK 1200%	
CHARGE SIZE 4 GUNS POP	SOLET	TIME ZONE HZ DB OCT HZ DB OCT		5) TV FILTER	
DATE SHOT APRIL 88	SOLET	000 - 0.40 29 18 50 12		6) PLAYBACK (UNFILTERED)	
		0.40 - 0.75 15 18 40 12		REEL NO 72434	
		0.75 - 1.30 10 12 35 12		DATE JUL 88	
		1.30 - 400 5 12 30 12			
		AUTO CORR INT TIME VARIANT			
		MAX APERTURE 0 - 980 m			
		ITERATIONS 0 - 4 985			

M-MESA 5005 VELOCITY CHANGE

INTERSECTION LINE ES-240 S.P. 93

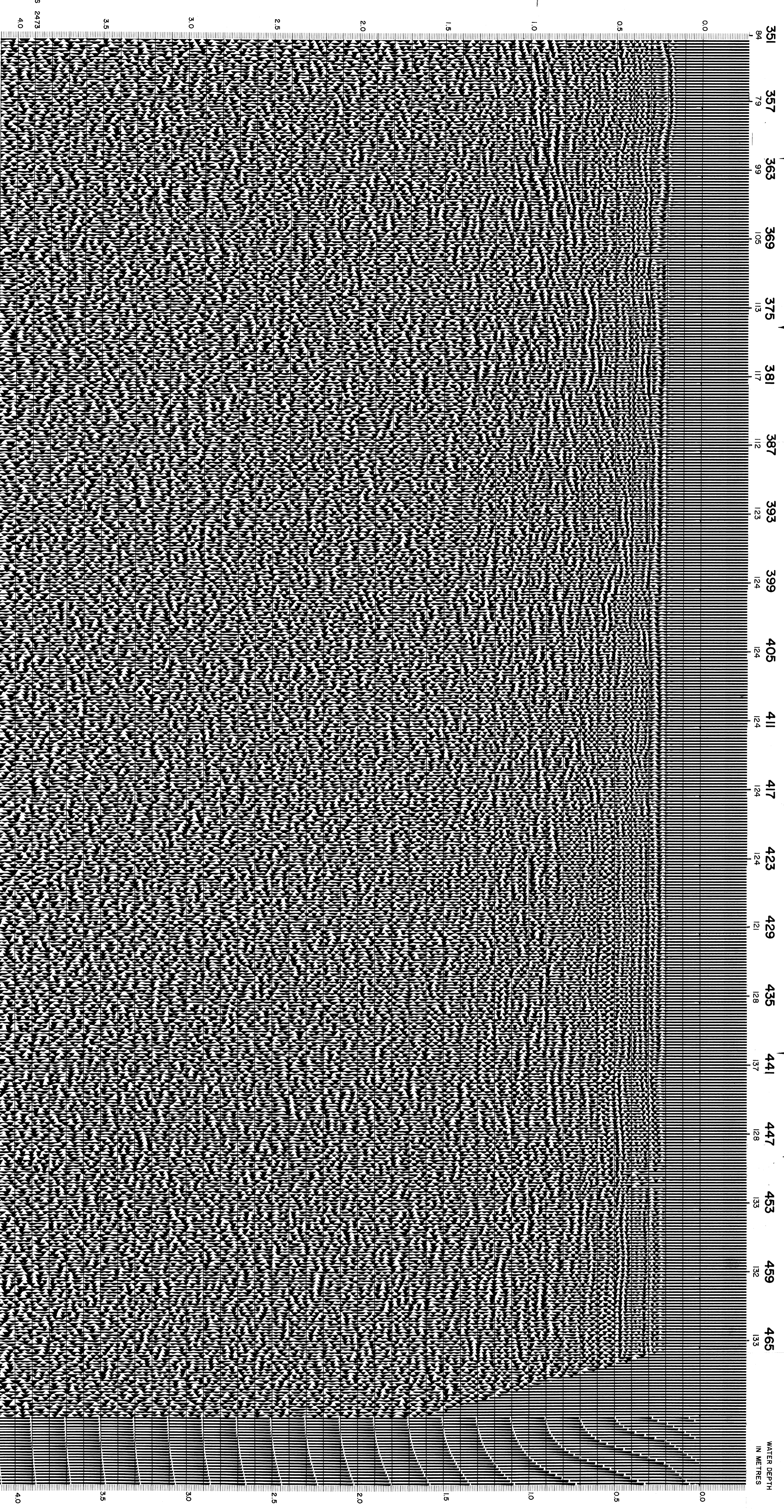
M-MESA 5020

VELOCITY CHANGE

INTERSECTION LINE ES-242 S.P. 92

M-MESA 5030

NORTH



0.0

0.5

1.0

1.5

2.0

2.5

3.0

3.5

4.0

0.0

0.5

1.0

1.5

2.0

2.5

3.0

3.5

4.0

351 357 363 369 375 381 387 393 399 405 411 417 423 429 435 441 447 453 459 465

84 79 99 105 113 117 112 123 124 124 124 124 124 121 128 137 128 133 132 133

WATER DEPTH IN METRES

CS 2473