



THE AQUAPULSE SYSTEM

LINE: ES-125

S.P. 321 to S.P. 231

DATUM PLANE: SEA LEVEL

INTERSECTION  
LINE ES-226 S.P. 222

**RGIP**

AREA: SARDINIA-ASINARA

PROSPECT: ZONE "E"

**WESTERN**  
GEOLOGICAL  
CORPORATION  
MILAN DIGITAL CENTER

**RECORDING DATA**

PARTY NO. 82  
ENERGY SOURCE AQUAPULSE  
FILTER 10-80 HZ  
CABLE 1600 m  
GEOPHONES 32 CRYSTAL ELEMENT  
TAPERED ARRAY  
LEAD IN 650 FT  
AMPLIFIER RECORDER BINARY GAIN  
CHARGE SIZE 4 GUNS POP  
DATE SHOT APRIL 1968

**PROCESSING INFORMATION**

SAMPLE RATE 4 ms

**DECONVOLUTION**

**DECONVOLVED BEFORE STACK**

AUTO CORRECT  
MAX APERTURE  
TIME ZONE  
ITERATIONS

TIME VARIANT  
0-.360 ms  
0-.4 .85  
4

**TIME VARIANT FILTER**

**TIME ZONE**

LC	HC
0.00 - 0.40	25 18 50 12
0.40 - 0.60	15 12 45 12
0.60 - 1.30	10 12 40 12
1.30 - 4.00	10 12 35 12

**PROCESSING SEQUENCE**

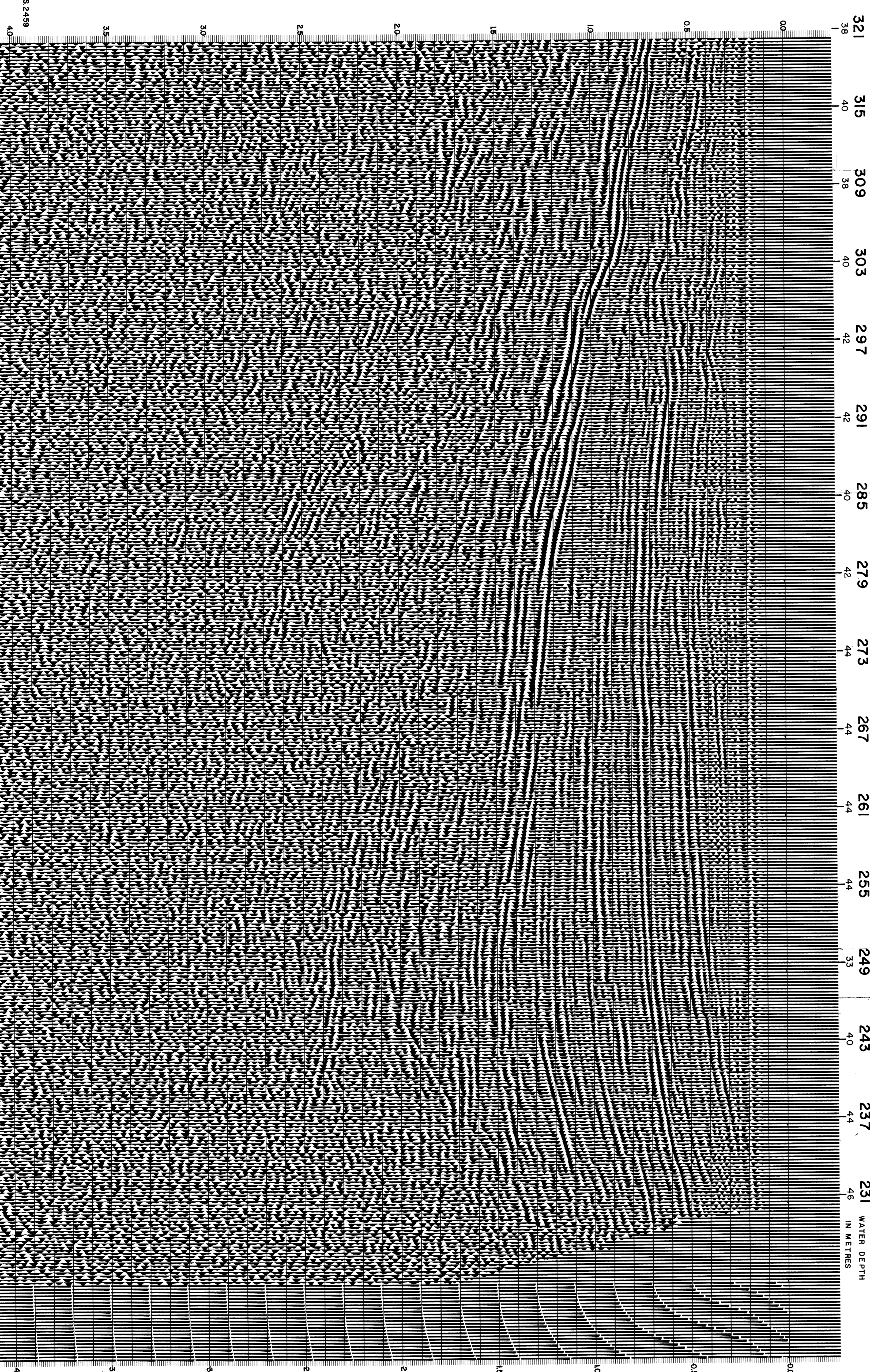
- 1) EDIT - SUM 3 POP(S)
  - 2) DECONVOLVED BEFORE STACK
  - 3) NORMAL MOVE OUT
  - 4) STACK (200%)
  - 5) TV-FILTER
  - 6) PLAYBACK (UNFILTERED)
- REFL NO 72 095  
DATE JULY 1968

M-MESA 5020

VELOCITY CHANGE  
INTERSECTION  
LINE ES-224 S.P. 180

MAMESA 5034

WEST



CS 2459

40