



THE AQUAPULSE SYSTEM

LINE: ES-125

S.P. 270D to S.P.180

DATUM PLANE: SEA LEVEL



AREA: SARDINIA - ASINARA

PROSPECT: ZONE "E"



WESTERN  
GEOPHYSICAL  
DIVISION OF LITTON INDUSTRIES  
MILAN DIGITAL CENTER

RECORDING DATA

PARTY NO. 62  
ENERGY SOURCE AQUAPULSE  
FILTER 10-80 HZ  
CABLE 1600 m  
GEOPHONES 32 CRYSTAL ELEMENT  
LEAD IN 680 FT  
AMPLIFIER RECORD BINARY GAIN  
CHARGE SIZE 4 GUNS POP  
DATE SHOT APRIL 1968

PROCESSING INFORMATION

SAMPLE RATE 2 ms

DECONVOLUTION

DECONVOLVED BEFORE STACK  
AUTO CORR INT TIME VARIANT  
MAX APERTURE 0-360 ms  
TIME ZONE 0-4 sec  
ITERATIONS 4

TIME VARIANT FILTER

TIME ZONE Hz dB/OCT Hz dB/OCT  
L-C H-C  
0.40 - 0.40 25 18 50 12  
0.40 - 0.68 18 12 45 12  
0.68 - 1.90 10 12 40 12  
1.90 - 4.00 10 12 35 12

PROCESSING SEQUENCE

- 1) EDIT (SUM 3 POPS)
- 2) DECONVOLVED BEFORE STACK
- 3) NORMAL MOVE OUT
- 4) STACK 1200%
- 5) TV-FILTER
- 6) PLAYBACK (UNFILTERED)

REEL NO. 72 621  
DATE JULY 1968

VELOCITY CHANGE

INTERSECTION  
LINE ES-224  
SR 160

M-MESA 5034

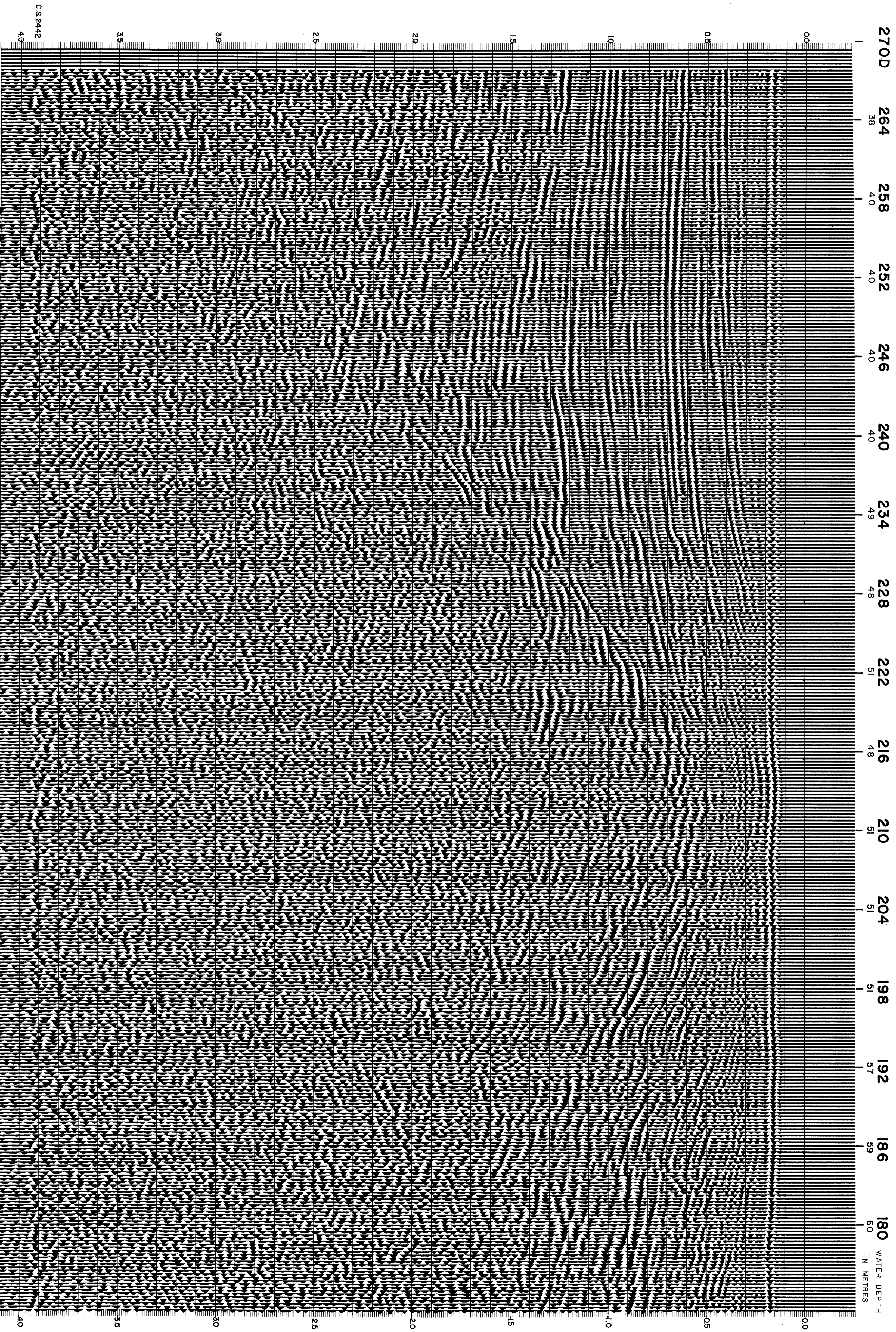
VELOCITY CHANGE

M-MESA 5015

VELOCITY CHANGE

M-MESA 5020

SOUTHWEST



CS-2442

4.0

3.5

3.0

2.5

2.0

1.5

1.0

0.5

0.0

270D

264

258

252

246

240

234

228

222

216

210

204

198

192

186

180

WATER DEPTH  
IN METRES

3.5

3.0

2.5

2.0

1.5

1.0

0.5

0.0

4.0