



THE AQUAPULSE SYSTEM

LINE: ES-123

S.P. 235 to S.P.115

DATUM PLANE: SEA LEVEL

NORTHEAST



AREA: SARDINIA - ASINARA

PROSPECT: ZONE "E"



WESTERN GEOPHYSICAL

DIVISION OF GEOTECHNICAL SERVICES

MILAN DIGITAL CENTER

RECORDING DATA

FACTORY NO. 62
ENERGY SOURCE AQUAPULSE
FILTER 10-80 HZ
CABLE 1800 m
GEOPHONES 32 CRYSTAL ELEMENT
TAPERED ARRAY
LEAD IN 630 FT
AMPLIFIER RECORD BINARY GAIN
CHARGE SIZE 4 GUNS POP
DATE SHOT APRIL 1968

PROCESSING

DECONVOLUTION
DECONVOLVED BEFORE STACK
AUTO CORR AN
W.D. AFTER TIME
TIME ZONE
ITERATIONS

INFORMATION

SAMPLE RATE 2 ms
TIME VARIANT FILTER
TIME ZONE
LC
HC
0.00 - 0.60 25 18 50 12
0.60 - 1.05 15 12 45 12
1.05 - 2.25 10 12 40 12
2.25 - 4.00 10 12 35 12

PROCESSING SEQUENCE

1) EDIT (SUM 3 POP'S)
2) DECONVOLVED BEFORE STACK
3) NORMAL MOVE OUT
4) STACK (200%)
5) TV FILTER
6) PLAYBACK (UNFILTERED)
REEL NO. 71 701
DATE JULY 1968

WATER DEPTH IN METRES
235 55
229 60
223 62
217 69
211 71
205 73
199 75
193 79
187 91
181 106
175 110
169 119
163 113
157 115
151 123
145 128
139 130
133 137
127 141
121 146
115 158

M-MESA 5014

VELOCITY CHANGE INTERSECTION LINE S.P. ES-224 91

M-MESA 5011

VELOCITY CHANGE

M-MESA 5022

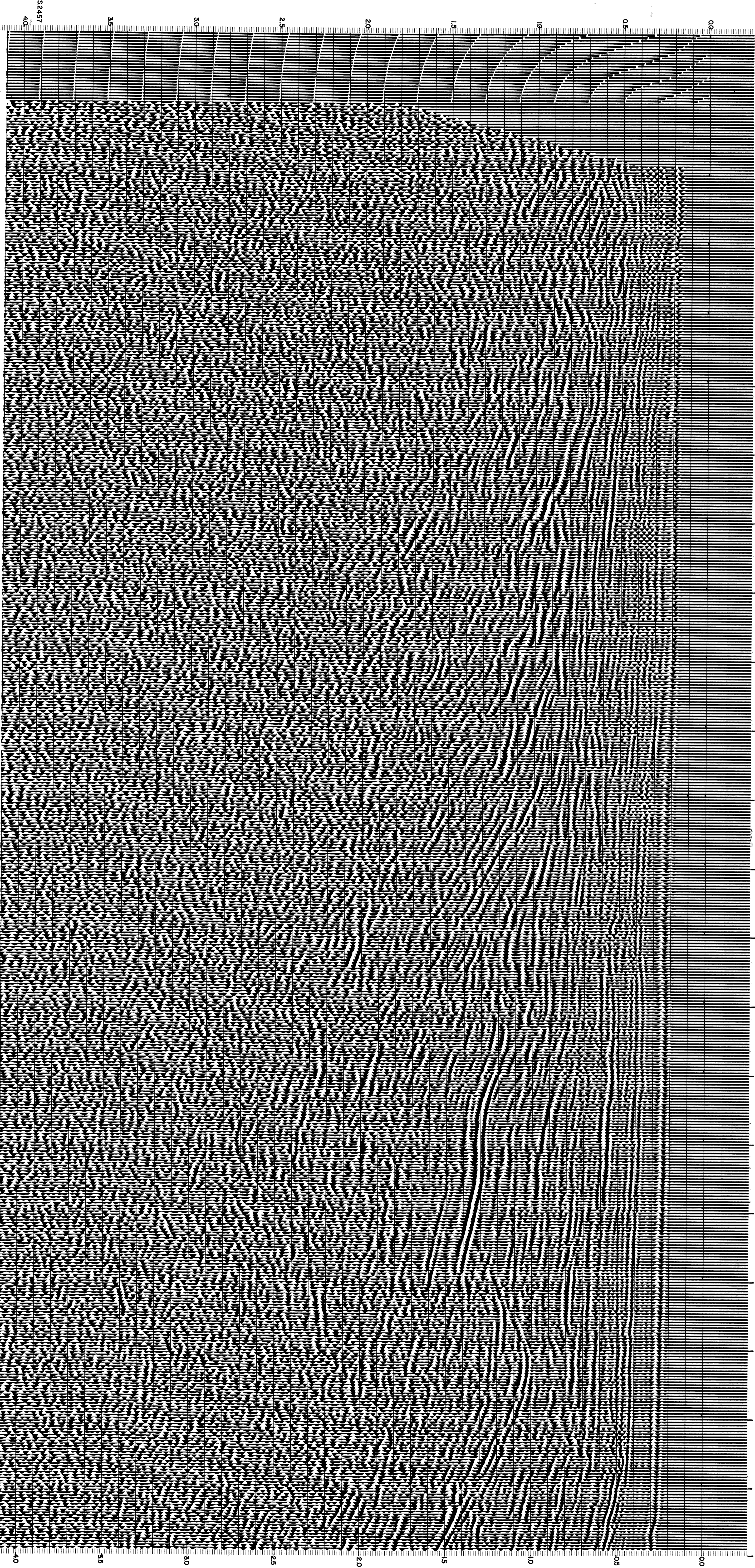
VELOCITY CHANGE INTERSECTION LINE S.P. ES-223 17

M-MESA 5010

VELOCITY CHANGE M-MESA 5022

M-MESA 5022

VELOCITY CHANGE M-MESA 5032



CS2457