



THE AQUAPULSE SYSTEM

LINE: ES-121

S.P. 139D to S.P. 73

DATUM PLANE: SEA LEVEL

INTERSECTION
LINE S.P.
ES-228 80

M-MESA 5014

VELOCITY CHANGE

M-MESA 5011

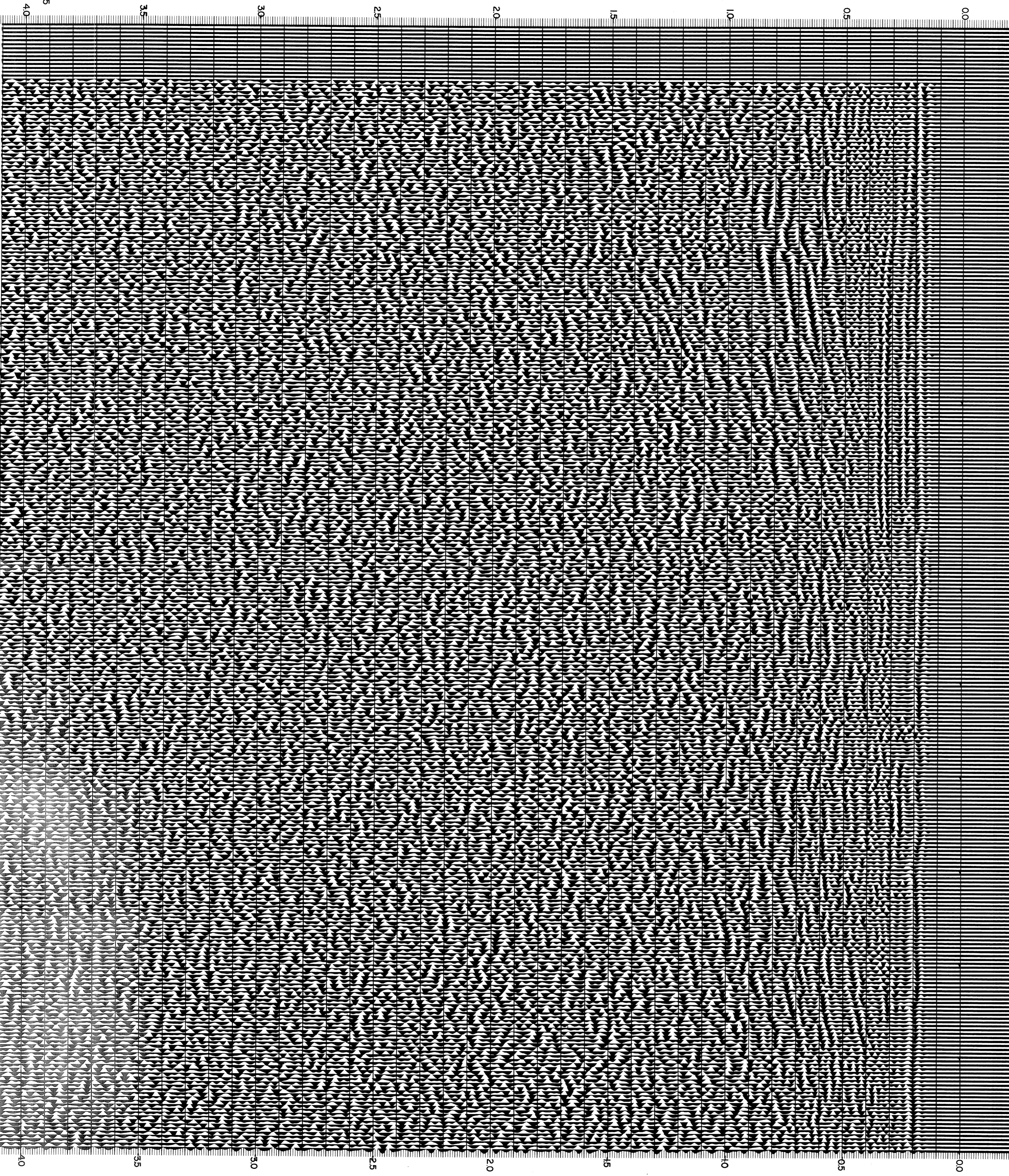
INTERSECTION
LINE S.P.
ES-226 81

WEST

139D 133 127 121 115 109 103 97 91 85 79 73

WATER DEPTH

80 IN METRES



AREA: SARDINIA - ASINARA

PROSPECT: ZONE "E"



WESTERN
GEOPHYSICAL
DIVISION OF UNION INDUSTRIES
MILAN DIGITAL CENTER

RECORDING DATA

PARTY NO. 62
ENERGY SOURCE AQUAPULSE
FILTER 10-80 HZ
CABLE 1600 m
GEOPHONES 32 CRYSTAL ELEMENT
TAPERED ARRAY
LEAD IN 650 FT
AMPLIFIER REDCOR BINARY GAIN
CHARGE SIZE 4 GUNS POP
DATE SHOT APRIL 1968

PROCESSING INFORMATION

SAMPLE RATE 2 ms

DECONVOLUTION

DECONVOLVED BEFORE STACK

AUTO CORR INT TIME VARIANT
MAX APERTURE 0 - 680 ms
TIME ZONE 0 - 4 sec
ITERATIONS 4

TIME VARIANT FILTER

TIME ZONE

LC HC
0.00 - 0.50 2.5 18 50 12
0.50 - 0.70 1.5 12 45 12
0.70 - 1.35 10 12 35 12
1.35 - 4.00 10 12 35 12

PROCESSING SEQUENCE

- 1) EDIT - (SUM 3 POPS)
- 2) DECONVOLVED BEFORE STACK
- 3) NORMAL MOVE OUT
- 4) STACK 1200%
- 5) TV-FILTER
- 6) PLAYBACK (UNFILTERED)

REEL NO. 72623
DATE JULY 1968

13.2435

35

30

25

20

15

10

05

00

35

30

25

20

15

10

05

00