



THE AQUAPULSE SYSTEM

LINE: ES-121

S.P. 67 to S.P. 1

DATUM PLANE: SEA LEVEL

M-MESA 5011



AREA: SARDINIA - ASINARA

PROSPECT: ZONE "E"

WESTERN
GEOPHYSICAL
DIVISION OF ARCO INDUSTRIALS
MILAN DIGITAL CENTER

RECORDING DATA

PARTY NO. 62
ENERGY SOURCE AQUAPULSE
FILTER 10-80 HZ
CABLE 1600 m
GEOPHONES 32 CRYSTAL ELEMENT
TAPERED ARRAY
LEAD IN 650 FT
AMPLIFIER REDCOR BINARY GAIN
CHARGE SIZE 4 GUNS POP
DATE SHOT APRIL 1968

PROCESSING INFORMATION

SAMPLE RATE 2 ms

DECONVOLUTION

DECONVOLVED BEFORE STACK

AUTO CORR INT TIME VARIANT
MAX APERTURE 0 - 680 ms
TIME ZONE 0 - 4 sec
ITERATIONS 4

TIME VARIANT FILTER

TIME ZONE Hz dB OCT Hz dB OCT

LC	HC
0.00 - 0.50	25 18 50 12
0.50 - 0.70	15 12 45 12
0.70 - 1.35	10 12 35 12
1.35 - 4.00	10 12 35 12

PROCESSING SEQUENCE

- 1) EDIT - (SUM 3 POPS)
- 2) DECONVOLVED BEFORE STACK
- 3) NORMAL MOVE OUT
- 4) STACK 120.0%
- 5) TV FILTER
- 6) PLAYBACK (UNFILTERED)

REFL NO 72623
DATE JULY 1968

VELOCITY CHANGE

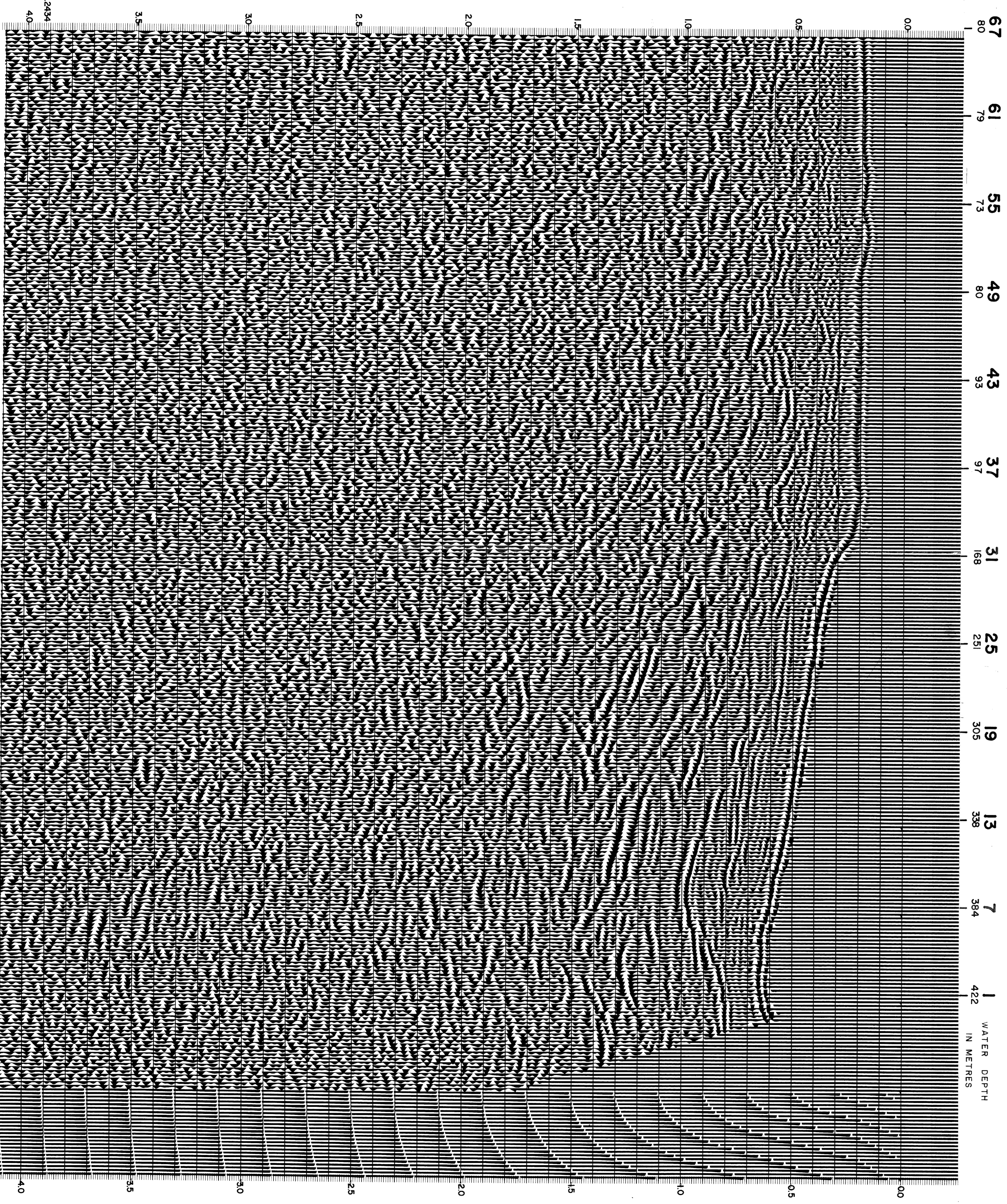


INTERSECTION
LINE ES-224
S.P. 22



M-MESA 5006

WEST



CS2434

4.0

3.5

3.0

2.5

2.0

1.5

1.0

0.5

0.0

67
80

61
79

55
73

49
80

43
93

37
97

31
168

25
251

19
305

13
338

7
384

1
422

WATER DEPTH
IN METRES

3.5

3.0

2.5

2.0

1.5

1.0

0.5

0.0

67
80

61
79

55
73

49
80

43
93

37
97

31
168

25
251

19
305

13
338

7
384

1
422

WATER DEPTH
IN METRES

4.0