

AGIP

AREA: MARE TIRRENO
ZONE 'E'

WESTERN
GEOPHYSICAL
DIVISION OF LITTON INDUSTRIES

PROCESSING SEQUENCE

RECORDING DATA

PARTY NO 62
ENERGY SOURCE AQUAPULSE
FILTER 10 80 HZ
CABLE 1600 M
GEOPHONES 32 CRYSTAL ELEMENT
TAPERED ARRAY
LEAD IN 700 FT
AMPLIFIER REDCOR BINARY GAIN
CHARGE SIZE 4 CUNS POP
DATE SHOT FEB 1968

PROCESSING INFORMATION

SAMPLE RATE 2 ms

DECONVOLUTION

DECONVOLVED BEFORE STACK
AUTO CORR INT TIME VARIANT
MAX APERTURE 0-260 ms
TIME ZONE 0 453-4 000 Sec
ITERATIONS 3

TIME VARIANT FILTER

TIME ZONE	HZ	DB	OCT	L C	H C
0 150-0 400	Sec	20	18	50	12
0 400-0 800		15	12	50	12
0 800-1 800		10	9	45	12
1 800-4 000		10	6	40	9

1) EDIT -(SUM - 3 POPS)

2) DECONVOLVED BEFORE STACK

3) NORMAL MOVE OUT

4) STACK 1200 %

5) T.V. FILTER

6) PLAYBACK (UNFILTERED)

REEL NO E-0845

DATE MAY 1968

W.G.C. CONTRACT LOP 169

LINE: 136

SP. 2 TO SP. 110D

DATUM PLANE: SEA LEVEL

NORTHEAST

— L-ITMS 5059S

VELOCITY CHANGE

— L-ITMS 5060S

VELOCITY CHANGE

— L-ITMS 5061S

VELOCITY CHANGE

— L-ITMS 5062S

INTERSECTION
LINE SP
111 663

2 8 14 20 26 32 38 44 50 56 62 68 74 80 86 92 98 104 110D
176 168 159 154 150 148 146 143 143 141 141 139 135 134 129 119 120 119 117

WATER DEPTH
IN METRES

0.0

0.5

1.0

1.5

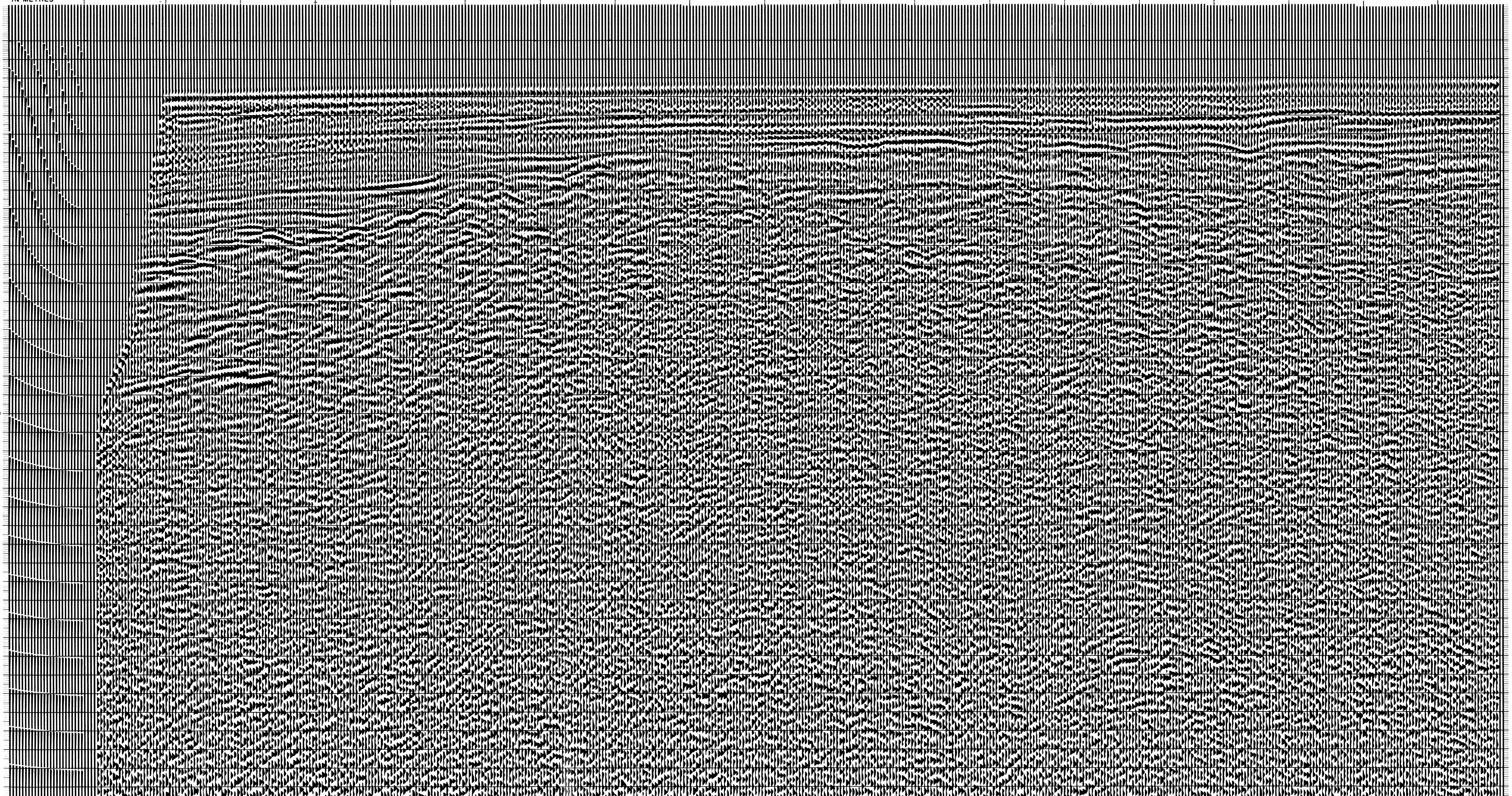
2.0

2.5

3.0

3.5

4.0



W.G.C. 756