

AGIP

AREA MARE TIRFENO PROSPECT ZONE 'E'

WESTERN GEOPHYSICAL

RECORDING DATA

EXPLOSION CHARGE DYNAMITE
DEPTH 1000 FT
WATER DEPTH 384 M
DATE SHOT APRIL 1968

PROCESSING INFORMATION

DECONVOLUTION

DECONVOLVED BEFORE STACK

TIME VARIANT FILTER

TIME VARIANT FILTER NOT APPLIED

PROCESSING SEQUENCE

SEQUENCE OF OPERATIONS
1. DECONVOLUTION
2. TIME VARIANT FILTER
3. STACKING
4. CORRECTION
5. PRINTING

LINE: 113X (POWDER)

S.P. 511D to S.P. 571

DATUM PLANE: SEA LEVEL

SOUTH EAST

M-ITMS 5509

M-ITMS 5511

INTERSECTION LINE S.P.
174 87

VELOCITY CHANGE
INTERSECTION LINE S.P.
113 557

INTERSECTION LINE S.P.
174 98

WATER DEPTH IN METRES

511D 384

517 391

523 388

529 391

535 384

541 362

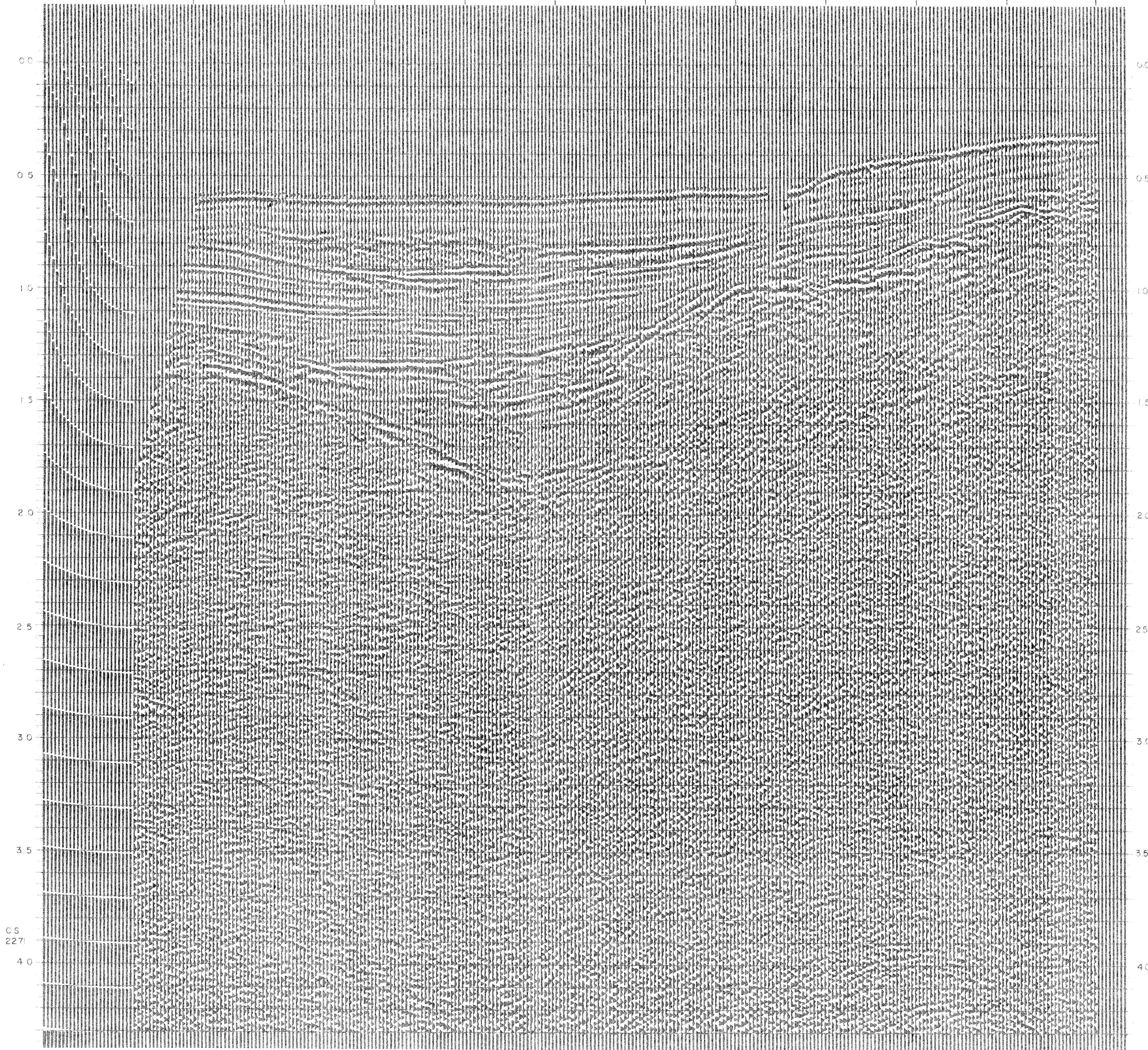
547 362

553 289

559 254

565 212

571



C.S. 227