

THE AQUAPULSE SYSTEM

LINE: 109

S.P. 2123 to S.P. 2219

DATUM PLANE: SEA LEVEL

VELOCITY CHANGE VELOCITY CHANGE

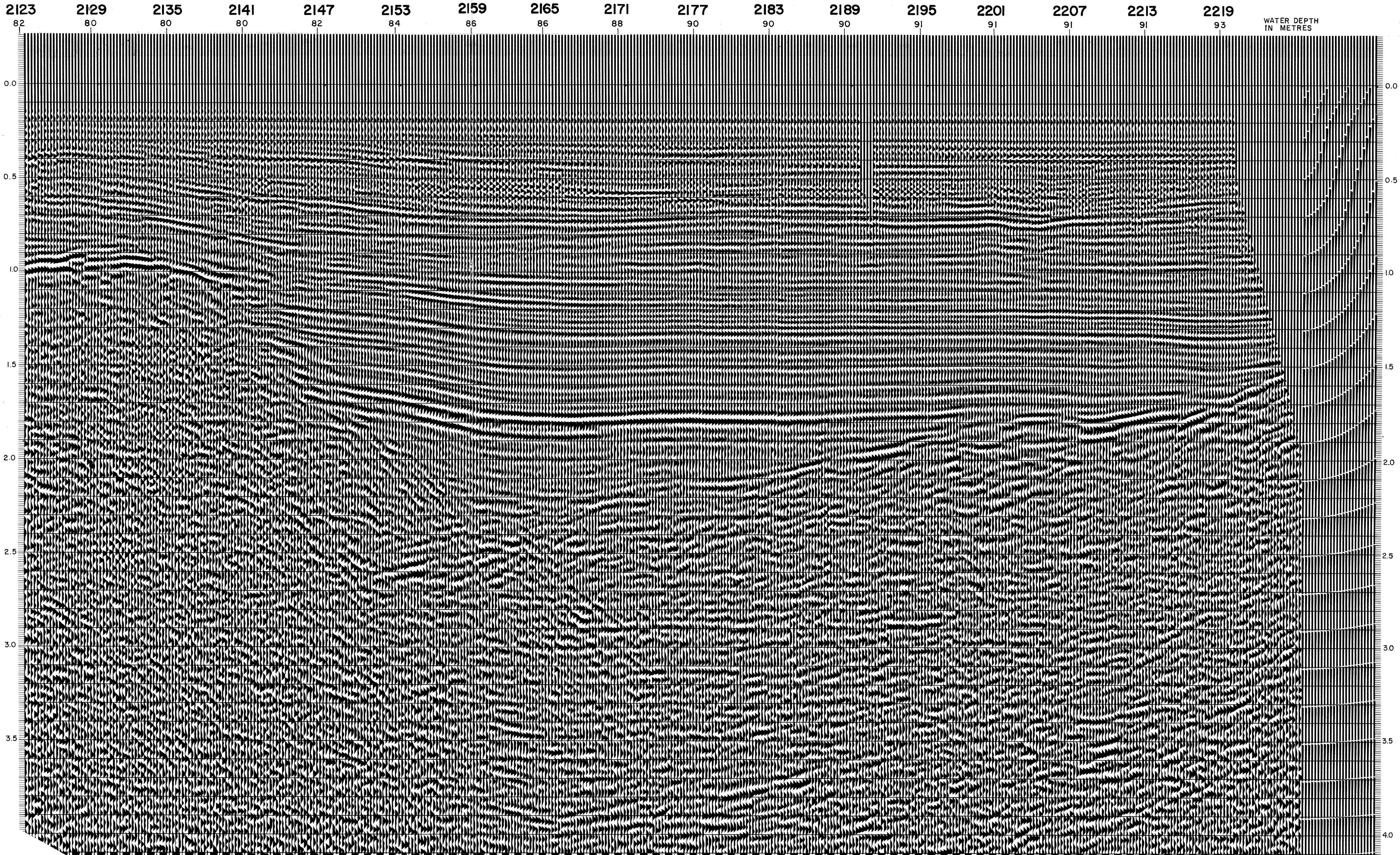
M-ITMS 5604 M-ITMS 5607

INTERSECTION  
LINE S.P.  
178 138

M-ITMS 5608

VELOCITY CHANGE

M-ITMS 5609



<b>AGIP</b> AREA: MARE TIRRENO PROSPECT: ZONE "E"		<b>WESTERN GEOPHYSICAL</b> <small>DIVISION OF LITTON INDUSTRIES</small> MILAN DIGITAL CENTER	
		<b>RECORDING DATA</b> PARTY NO. 62 ENERGY SOURCE AQUAPULSE FILTER 10-80 HZ CABLE 1600 m GEOPHONES 32 CRYSTAL ELEMENT TAPERED ARRAY LEAD IN 700 FT AMPLIFIER REDCOR BINARY GAIN CHARGE SIZE 4 GUNS POP DATE SHOT MARCH 1968	
<b>PROCESSING INFORMATION</b> SAMPLE RATE 2 ms		<b>PROCESSING SEQUENCE</b> 1) EDIT - (SUM 3 POPS) 2) DECONVOLVED BEFORE STACK 3) NORMAL MOVE OUT 4) STACK 1200% 5) TV.FILTER 6) PLAYBACK (UNFILTERED)	
<b>DECONVOLUTION</b> DECONVOLVED BEFORE STACK AUTO CORR. INT. _____ TIME VARIANT MAX APERTURE _____ 0-360 ms TIME ZONE _____ 0-4 sec ITERATIONS _____ 3		<b>TIME VARIANT FILTER</b> LC HC TIME ZONE Hz dB OCT Hz dB OCT NOT APPLIED 0.0 - 0.370 25 - 24 - 50 - 12 - 0.370 - 0.630 20 - 18 - 45 - 12 - 0.630 - 1.350 15 - 18 - 40 - 12 - 1.350 - 1.750 10 - 12 - 35 - 12 - 1.750 - 2.350 10 - 12 - 30 - 12 - 2.350 - 4.000 5 - 6 - 30 - 6 -	



WEST