

THE AQUAPULSE SYSTEM



AREA: MARE TIRRENO PROSPECT: ZONE "E"

WESTERN GEOPHYSICAL
DIVISION OF LITTON INDUSTRIES
MILAN DIGITAL CENTER

RECORDING DATA

PARTY NO. 62
ENERGY SOURCE AQUAPULSE
FILTER 10-80 HZ
CABLE 1600 m
GEOPHONES 32 CRYSTAL ELEMENT
TAPERED ARRAY
LEAD IN 6.50 FT
AMPLIFIER REDCOR BINARY GAIN
CHARGE SIZE 4 GUNS POP
DATE SHOT APRIL 1968

PROCESSING INFORMATION

SAMPLE RATE 2 ms

DECONVOLUTION

DECONVOLVED BEFORE STACK

AUTO CORR INT TIME VARIANT
MAX APERTURE 0-360 ms
TIME ZONE 0-4 sec
ITERATIONS 3

TIME VARIANT FILTER

TIME ZONE	LC		HC	
	Hz	dB OCT	Hz	dB OCT
0.00 - 0.40	25	18	50	12
0.40 - 0.80	15	12	40	12
0.80 - 1.70	10	12	35	12
1.70 - 4.00	10	6	30	12

PROCESSING SEQUENCE

- 1) EDIT - (SUM 3 POPS)
- 2) DECONVOLVED BEFORE STACK
- 3) NORMAL MOVE OUT
- 4) STACK 1200%
- 5) T.V. FILTER
- 6) PLAYBACK (UNFILTERED)

REEL NO. 72 606
DATE JUNE 1968

LINE: 101 SR ²²

S.P. 1900 to S.P. 1978

SOUTH EAST

DATUM PLANE: SEA LEVEL

M-ITMS 5650

VELOCITY CHANGE

M-ITMS 5653

VELOCITY CHANGE

M-ITMS 5659

INTERSECTION LINE

S.P. 190-101SR / 123-1914A

WATER DEPTH IN METRES

1900 29

1906 31

1912 31

1918 31

1924 31

1930 31

1936 31

1942 31

1948 31

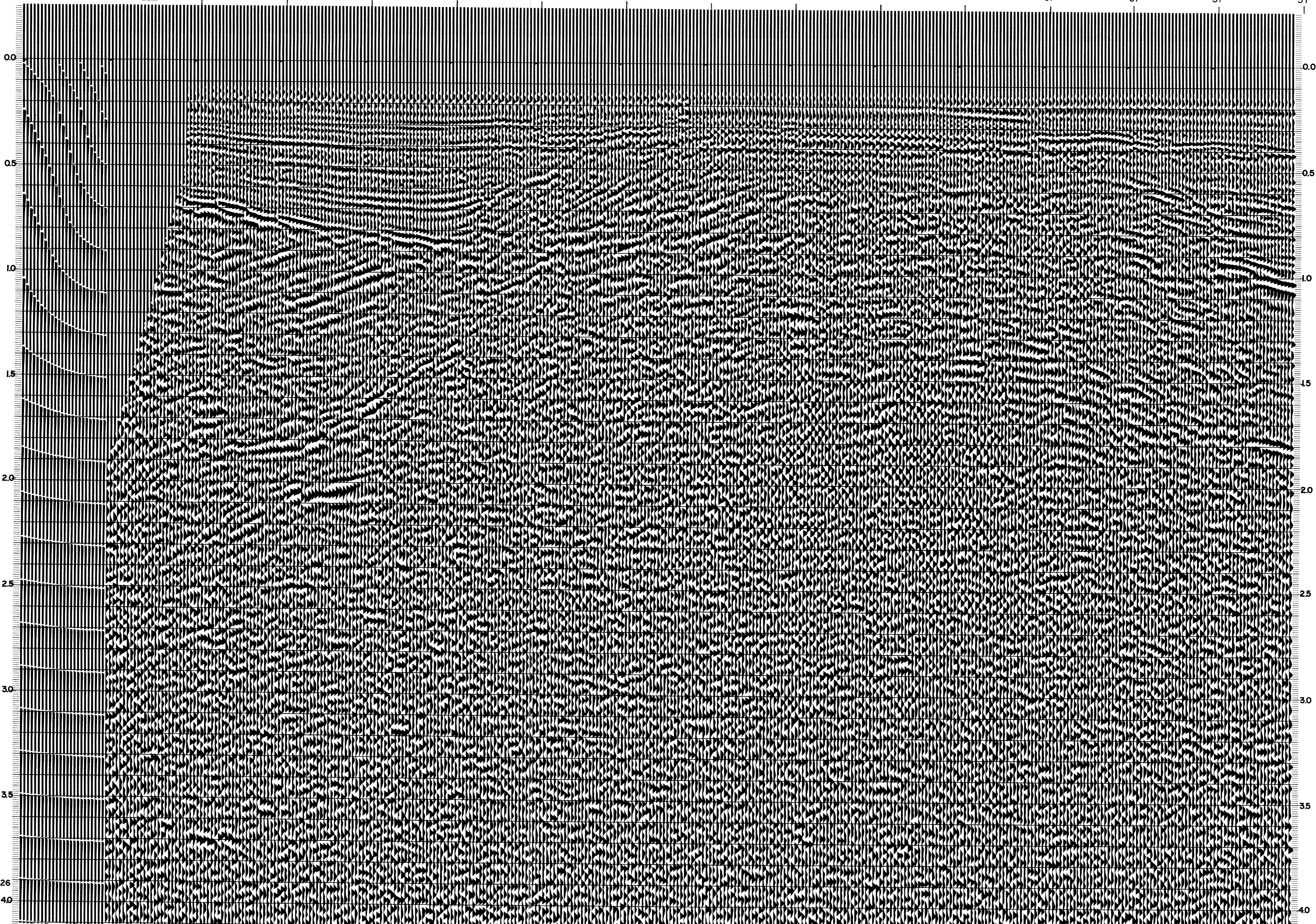
1954 31

1960 31

1966 31

1972 31

1978 31



C.S.2426