

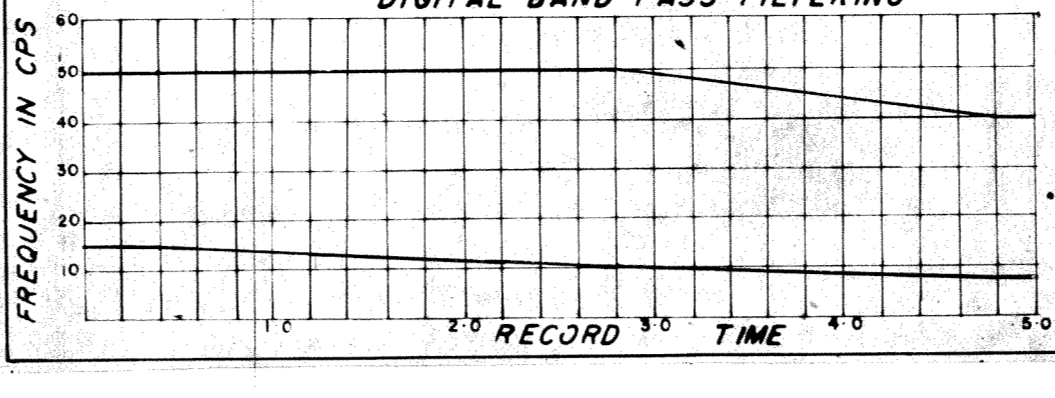
SHOOTING PARAMETERS
 6-Fold Off End
 Shot by G.S.I. PTY 910
 Cable Length 1600 m
 Group Interval 67 m
 Shot Point Interval 134 m
 Average Shot Offset 134 m
 Charge Size 50 lb
 Average Sens. Depth 15 m

RECORDING PARAMETERS
 System 9,000
 Record Length 5.0 secs
 Sample 2 ms
 GAGC Trip 0.47 s Rate 80 db/s
 Init. 36 db Final 100 db
 Filters Hi 75 cps 24 db/oct
 Lo 8 cps 24 db/oct
 2ms Anti Alias Filtering

SEIS EDIT & NMO
 TAR
 $\epsilon = 4.0$ db/sec
 From 0 sec to 4.0 sec
 Water Velocity 1500 mps
 Replacement Vel 1500 mps

DECONVOLUTION
 Time variant RD 1
 Filter Length 22 msec
 Gate Length 24.00 msec
 No of Gates/Trace = 2
 Initial times, Gate No 1 :-
 Tr 1 11 sec, Tr 2 4 03 sec
 Final times, Gate No :-
 Tr 1 4.7 sec, Tr 2 3.9 sec

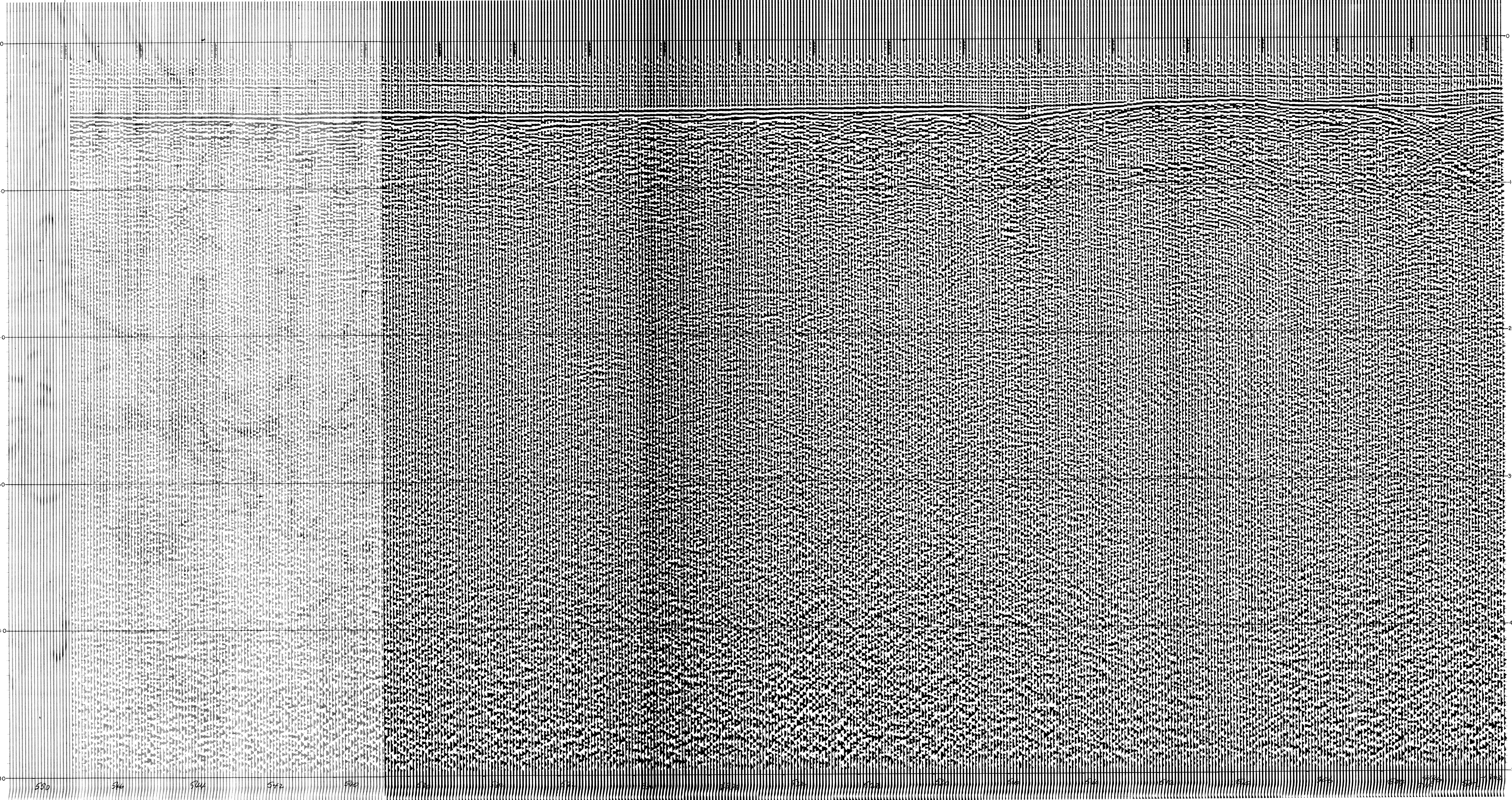
6-FOLD STACK
 Optimum Wide Band Stack
 RNMO Yes.
 First Break Suppression
 T₁ 0 sec T₂ 1.2 sec
 T₃ 0.6 sec T₄ 1.4 sec
 T₅ 1.0 sec T₆ 1.6 sec



DISPLAY
 Analog Filters OUT-OUT
 Straight Gain
 +12 + 6 - 18 = 0
 Tape HTL 4245

REQ. N° L-1303
 Section N° 4146 C
 System Code MSTV-2
 Assembled by *[Signature]*
 Checked by *[Signature]* SE

38 Meters 40 42 44 47 49 50 54 55 57 61 63 65 Meters
 H 2546 H 2540 H 2530 H 2520 H 2510 H 2500 H 2490 H 2480 H 2470 H 2460 H 2450 H 2440 H 2432



530 544 544 542 540 538 536 534 532 530 528 526 524 522 520 518 516 514 512 510 508 506 504 502 500 498 496 494 492 490 488 486 484 482 480 478 476 474 472 470 468 466 464 462 460 458 456 454 452 450 448 446 444 442 440 438 436 434 432 430 428 426 424 422 420 418 416 414 412 410 408 406 404 402 400 398 396 394 392 390 388 386 384 382 380 378 376 374 372 370 368 366 364 362 360 358 356 354 352 350 348 346 344 342 340 338 336 334 332 330 328 326 324 322 320 318 316 314 312 310 308 306 304 302 300 298 296 294 292 290 288 286 284 282 280 278 276 274 272 270 268 266 264 262 260 258 256 254 252 250 248 246 244 242 240 238 236 234 232 230 228 226 224 222 220 218 216 214 212 210 208 206 204 202 200 198 196 194 192 190 188 186 184 182 180 178 176 174 172 170 168 166 164 162 160 158 156 154 152 150 148 146 144 142 140 138 136 134 132 130 128 126 124 122 120 118 116 114 112 110 108 106 104 102 100 98 96 94 92 90 88 86 84 82 80 78 76 74 72 70 68 66 64 62 60 58 56 54 52 50