

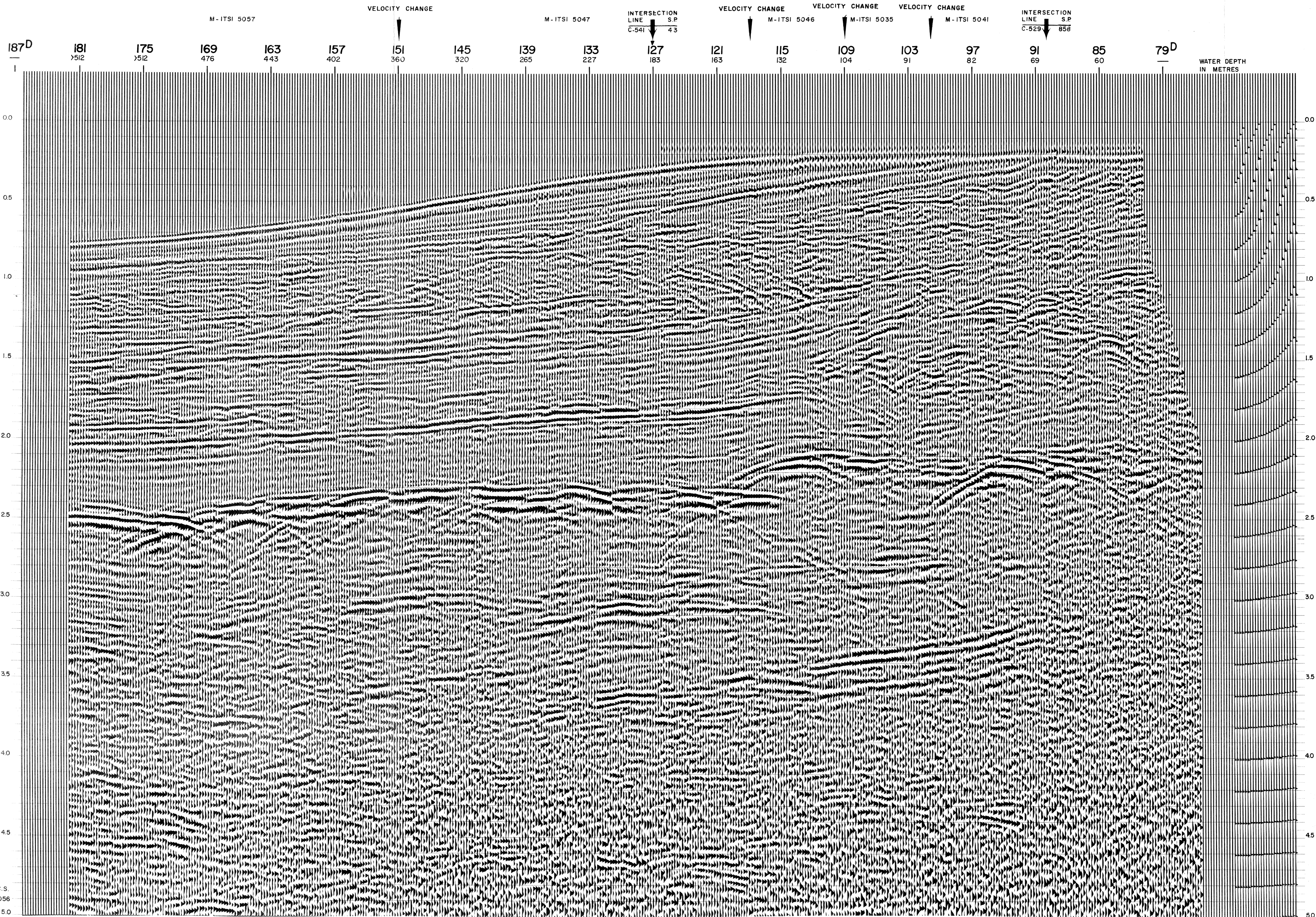
THE AQUAPULSE SYSTEM

AGIP		AREA: GELA-NOTO		PROSPECT: ZONE "C"		WESTERN GEOPHYSICAL <small>DIVISION OF LITTON INDUSTRIES</small> MILAN DIGITAL CENTER	
RECORDING DATA PARTY NO. 62 ENERGY SOURCE AQUAPULSE FILTER 10-80 HZ CABLE 1600 m. GEOPHONES 32 CRYSTAL ELEMENT TAPERED ARRAY LEAD IN 760'		PROCESSING INFORMATION SAMPLE RATE 4ms				PROCESSING SEQUENCE 1) EDIT - (SUM 4 POPS) 2) DECONVOLVED BEFORE STACK 3) NORMAL MOVE OUT 4) 1200 % STACK 5) TV FILTER 6) PLAYBACK (UNFILTERED) ▼ VELOCITY ANALYSIS	
DECONVOLUTION DECONVOLVED BEFORE STACK AUTO CORR. INT. TIME VARIANT MAX APERTURE 0-400 m. TIME ZONE 0-5 Sec. ITERATIONS 2		TIME VARIANT FILTER L.C. H.C. TIME ZONE Hz dB OCT Hz dB OCT				REEL NO. 76715 DATE MAY 1969	
		0.150-0.800 20 6 60 12 0.800-2.000 1.5 6 50 12 2.000-3.000 1.0 6 50 12 3.000-4.000 1.0 6 3.5 12 4.000-5.000 5 6 30 12					

LINE: C-608

S.P. 187^D to S.P. 79^D

DATUM PLANE : SEA LEVEL



C.S.
9056