

AGIP AREA : GELA-NOTO PROSPECT : ZONE "C"	WESTERN GEOPHYSICAL DIVISION OF LITTON INDUSTRIES MILAN DIGITAL CENTER	
	RECORDING DATA PARTY NO. 62 ENERGY SOURCE AQUAPULSE FILTER 10-80 HZ CABLE 1600 m. GEOPHONES 32 CRYSTAL ELEMENT TAPERED ARRAY LEAD IN 760'	PROCESSING INFORMATION SAMPLE RATE 4ms DECONVOLUTION DECONVOLVED BEFORE STACK AUTO CORR. INT. TIME VARIANT MAX. APERTURE 0-400 ms. TIME ZONE 0-5 Sec. ITERATIONS 2
TIME VARIANT FILTER L.C. H.C. TIME ZONE Hz dB OCT Hz dB OCT 0.150-0.350 20 6 60 12 0.350-0.600 15 6 50 12 0.600-1400 10 6 50 12 1400-3000 10 6 35 12 3000-5000 5 6 30 12	PROCESSING SEQUENCE 1) EDIT - (SUM 4 POPS) 2) DECONVOLVED BEFORE STACK 3) NORMAL MOVE OUT 4) 1200 % STACK 5) TV FILTER 6) PLAYBACK (UNFILTERED) V- VELOCITY ANALYSIS REEL NO. 76716 DATE MAY 1969	

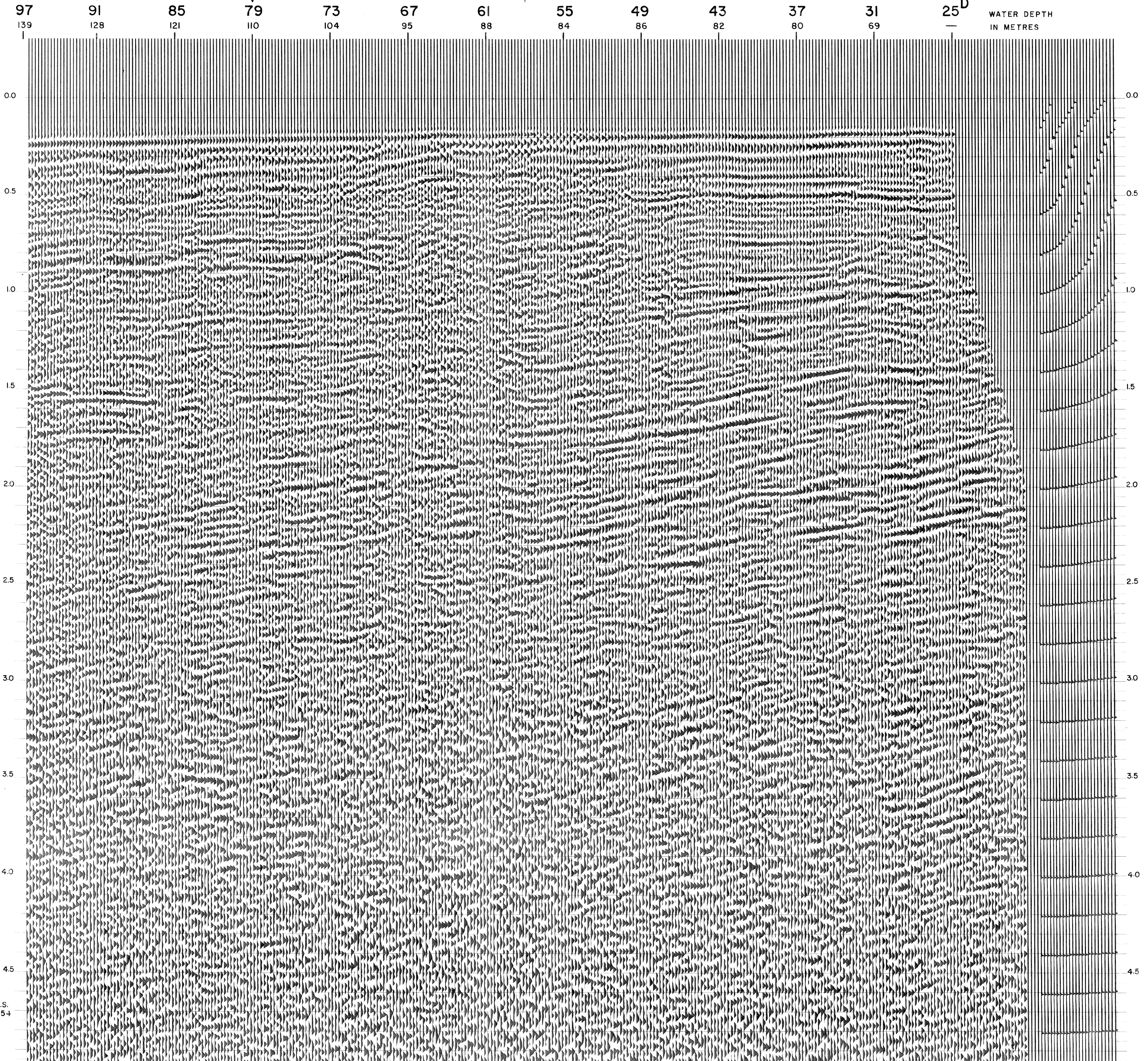
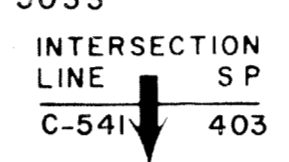
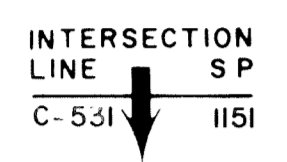
LINE : C-598

S.P. 97 to S.P. 25^D

DATUM PLANE : SEA LEVEL



M-ITSI 5033



C.S. 9054