



THE AQUAPULSE SYSTEM

LINE : C-598

S.P. 37D to S.P. 1D

DATUM PLANE : SEA LEVEL

NORTHEAST

INTERSECTION LINE S.P.  
C-529 1220

VELOCITY CHANGE

INTERSECTION LINE S.P.  
C-537W 397

M-ITSI 5034

M-ITSI 5181

37<sup>D</sup>

31  
66

25  
55

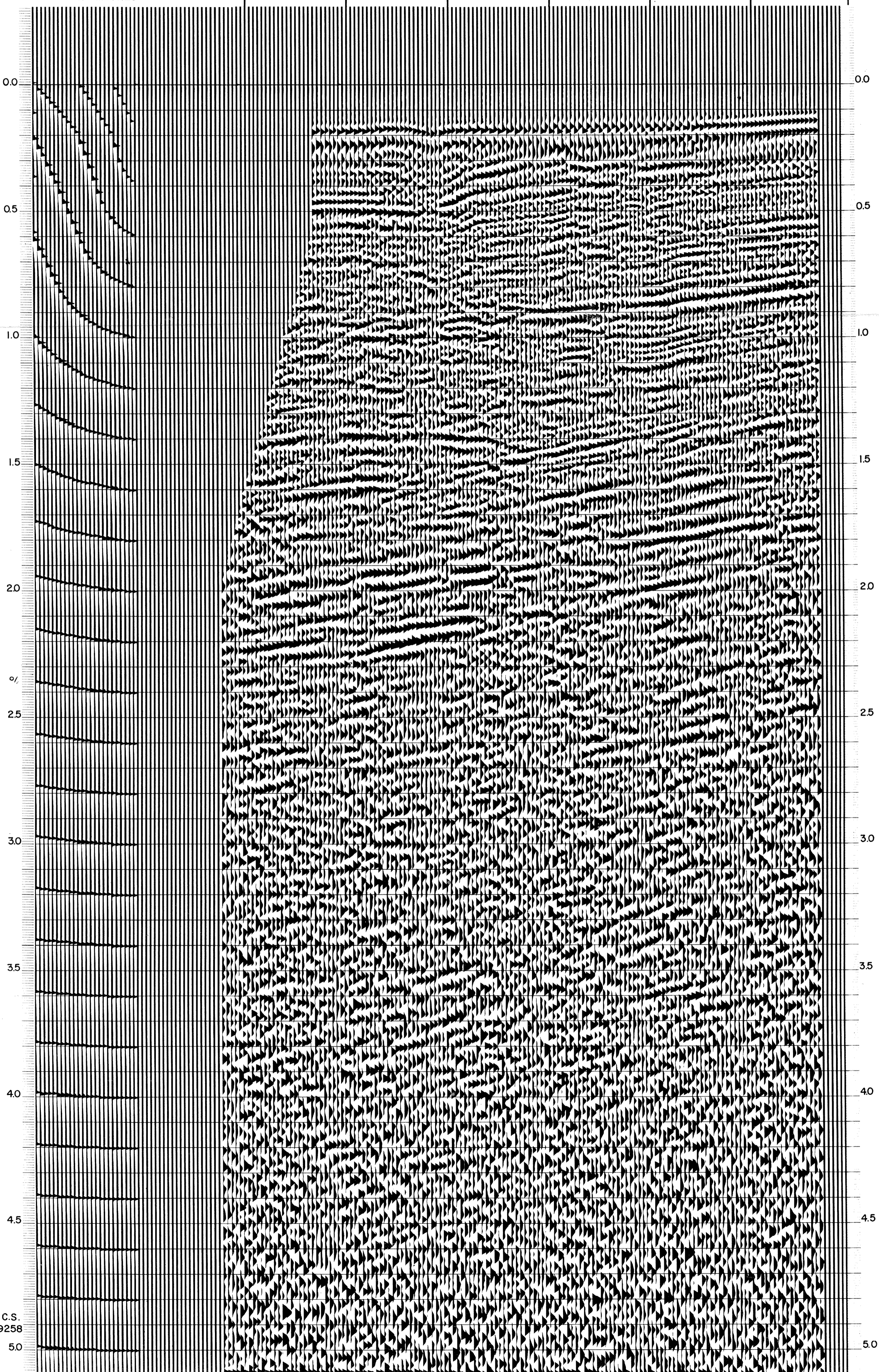
19  
44

13  
37

7  
24

1<sup>D</sup>

WATER DEPTH  
IN METRES



AGIP

AREA : GELA-NOTO

PROSPECT : ZONE "C"

WESTERN  
GEOPHYSICAL  
DIVISION OF LITTON INDUSTRIES  
MILAN DIGITAL CENTER

RECORDING DATA

PARTY NO. 62  
ENERGY SOURCE AQUAPULSE  
FILTER 10-80 HZ  
CABLE 1800 m.  
GEOPHONES 32 CRYSTAL ELEMENT  
TAPERED ARRAY  
LEAD IN 780'  
AMPLIFIER REDOOR BINARY GAIN  
CHARGE SIZE 4 GUNS POP  
DATE SHOT MARCH 1969

PROCESSING INFORMATION

SAMPLE RATE 4 ms

DECONVOLUTION

AUTO CORR. INT. TIME VARIANT  
MAX. APERTURE 0-400 m.  
TIME ZONE 0-5 Sec  
ITERATIONS 2

DECONVOLVED BEFORE STACK

TIME VARIANT FILTER

TIME ZONE	Hz	DB	OCT	Hz	DB	OCT
0.25 - 0.300	20	6	60	6	6	6
0.300 - 0.750	18	6	50	6	6	6
0.750 - 1.600	10	6	50	6	6	6
1.600 - 1.800	10	6	35	6	6	6
1.800 - 5.000	5	6	30	6	6	6

PROCESSING SEQUENCE

- 1) EDIT - (SUM 4 POPS)
- 2) DECONVOLVED BEFORE STACK
- 3) NORMAL MOVE OUT
- 4) 1200 % STACK
- 5) TV-FILTER
- 6) PLAYBACK (UNFILTERED)
- 7) VELOCITY ANALYSIS

REEL NO. 76835  
DATE JUNE 1969