

THE AQUAPULSE SYSTEM

LINE: C-584

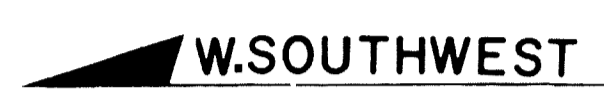
S.P. 361 to S.P. 265

DATUM PLANE : SEA LEVEL

AGIP AREA : GELA-NOTO PROSPECT : ZONE "C"	RECORDING DATA PARTY NO. 62 ENERGY SOURCE AQUAPULSE FILTER 10-80 HZ CABLE 1600 m. GEOPHONES 32 CRYSTAL ELEMENT TAPERED ARRAY LEAD IN 760'		PROCESSING INFORMATION SAMPLE RATE 4ms DECONVOLUTION DECONVOLVED BEFORE STACK AUTO CORR. INT. TIME VARIANT MAX. APERTURE 0-400 ms. TIME ZONE 0-5 Sec. ITERATIONS 2		TIME VARIANT FILTER L.C. H.C. TIME ZONE Hz dB OCT Hz dB OCT 0.100 - 0.400 20 6 60 12 0.400 - 0.800 15 6 50 12 0.800 - 2.000 10 6 50 12 2.000 - 3.500 10 6 3.5 12 3.500 - 5.000 5 6 30 6
	PROCESSING SEQUENCE 1) EDIT - (SUM 4 POPS) 2) DECONVOLVED BEFORE STACK 3) NORMAL MOVE OUT 4) 1200 % STACK 5) TV FILTER 6) PLAYBACK (UNFILTERED) V - VELOCITY ANALYSIS		REEL NO. 74862 DATE MAY 1969		

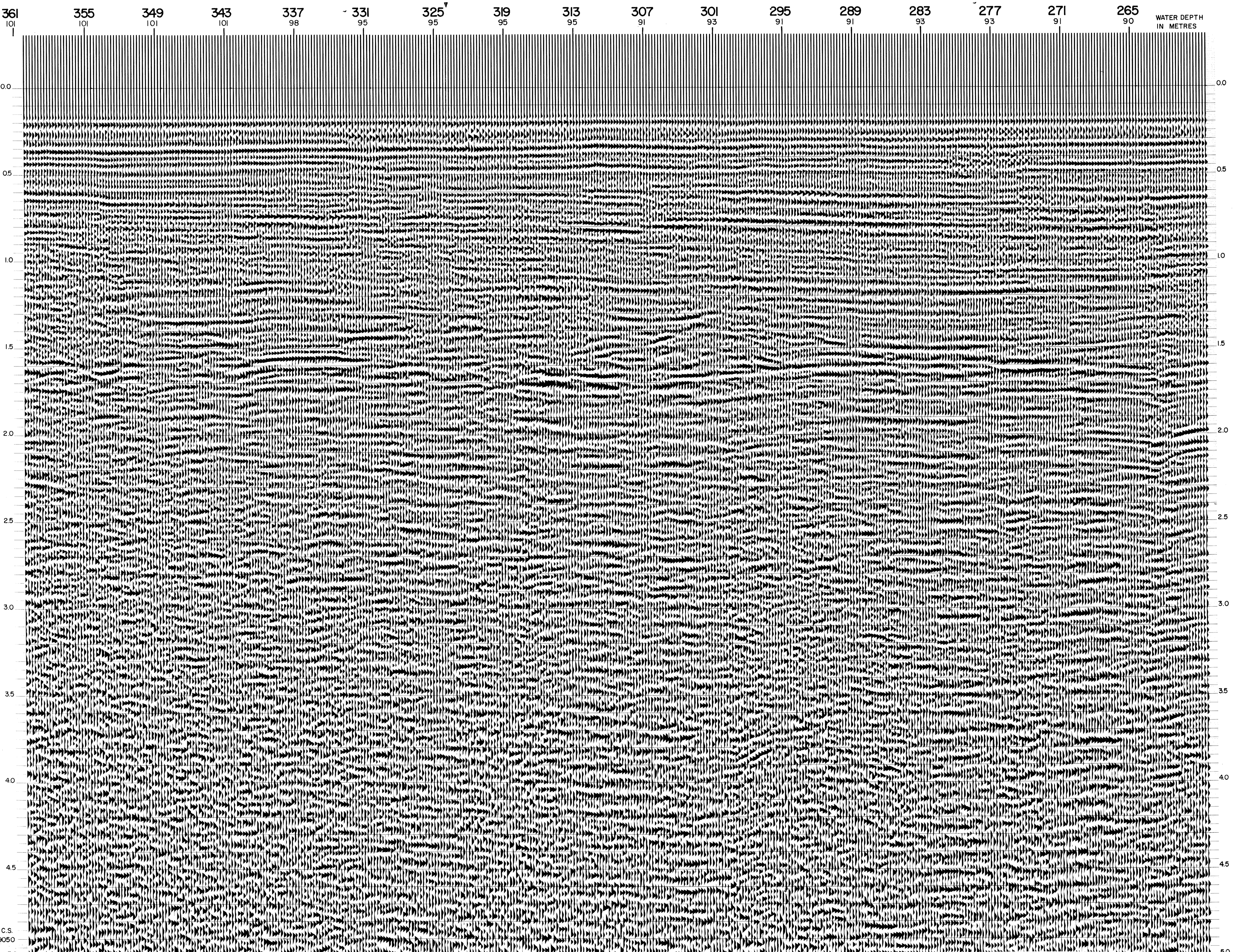
WESTERN
 GEOPHYSICAL
 DIVISION OF LITTON INDUSTRIES
 MILAN DIGITAL CENTER

M - ITS1 5002



INTERSECTION
 LINE S.P.
 C-543 455

INTERSECTION
 LINE S.P.
 C-531 1584



C.S.
 9050
 5.0