

THE AQUAPULSE SYSTEM

<b>AGIP</b>		AREA : GELA-NOTO		PROSPECT : ZONE "C"		<b>WESTERN</b> GEOPHYSICAL <small>DIVISION OF LITTON INDUSTRIES</small> MILAN DIGITAL CENTER	
<b>RECORDING DATA</b> PARTY NO. 62 ENERGY SOURCE AQUAPULSE FILTER 10-80 HZ CABLE 1600 m. GEOPHONES 32 CRYSTAL ELEMENT TAPERED ARRAY LEAD IN 760'		<b>PROCESSING INFORMATION</b> SAMPLE RATE 4ms				<b>PROCESSING SEQUENCE</b> 1) EDIT - (SUM 4 POPS) 2) DECONVOLVED BEFORE STACK 3) NORMAL MOVE OUT 4) 1200 % STACK 5) TV FILTER 6) PLAYBACK (UNFILTERED) V-VELOCITY ANALYSIS	
<b>DECONVOLUTION</b> DECONVOLVED BEFORE STACK AUTO CORR. INT. TIME VARIANT MAX. APERTURE 0-400 ms. CHARGE SIZE 4 GUNS POP DATE SHOT MARCH 1969 ITERATIONS 2		<b>TIME VARIANT FILTER</b> L.C. H.C. TIME ZONE Hz dB OCT Hz dB OCT 0.200-0.350 20 6 60 12 0.350-0.500 15 6 50 12 0.500-1.000 10 6 50 12 1.000-2.700 10 6 35 12 2.700-5.000 5 6 30 12				REEL NO. 75942 DATE MAY 1969	

LINE: C-580

S.P. 103 to S.P. 1

DATUM PLANE : SEA LEVEL

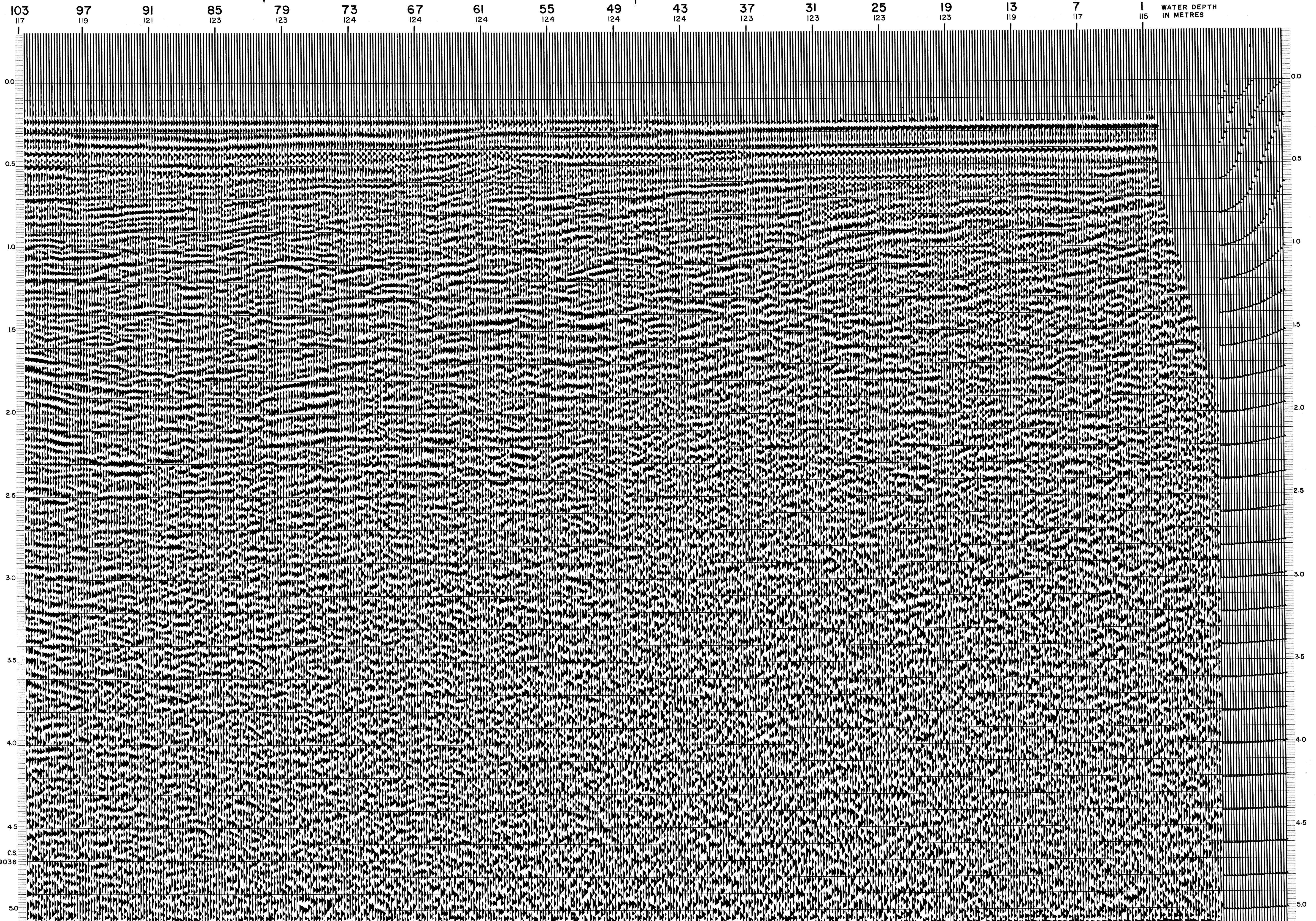


INTERSECTION  
LINE S.P.  
C-529 1790

M-ITSI 5010

INTERSECTION  
LINE S.P.  
C-539 469

INTERSECTION  
LINE S.P.  
C-525 355



C.S. 9036