

THE AQUAPULSE SYSTEM



AREA: SICILY

PROSPECT: ZONE 'C'

WESTERN GEOPHYSICAL
DIVISION OF AMERICAN INDUSTRIES
MILAN DIGITAL CENTER

RECORDING DATA

PARTY NO. 62
ENERGY SOURCE AQUAPULSE
FILTER 10-80 HZ
CABLE 1600 m
GEOPHONES 32 CRYSTAL ELEMENT
TAPERED ARRAY
LEAD IN 765 FT
AMPLIFIER REDCOR BINARY GAIN
CHARGE SIZE 4 GUNS POP
DATE SHOT JUNE 1968

PROCESSING INFORMATION

SAMPLE RATE 2 ms

DECONVOLUTION

DECONVOLVED BEFORE STACK

TIME VARIANT FILTER

TIME ZONE LC HC
Hz dB OCT Hz dB OCT

AUTO CORR INT TIME VARIANT
MAX APERTURE 0.720 ms
TIME ZONE 0-5.000
ITERATIONS 2

0.100 - 0.375	20	18	60	18
0.375 - 0.625	15	12	50	12
0.625 - 2.200	10	12	50	12
2.200 - 2.400	10	12	35	12
2.400 - 5.000	5	6	30	5

PROCESSING SEQUENCE

- 1) EDIT (SUM 3 POPS)
- 2) DECONVOLVED BEFORE STACK
- 3) NORMAL MOVE OUT
- 4) STACK 1200%
- 5) TV FILTER
- 6) PLAYBACK (UNFILTERED)

REEL NO 73 225
DATE AUGUST 1968

LINE: C-570

S.P. 105 to S.P. 213

DATUM PLANE: SEA LEVEL

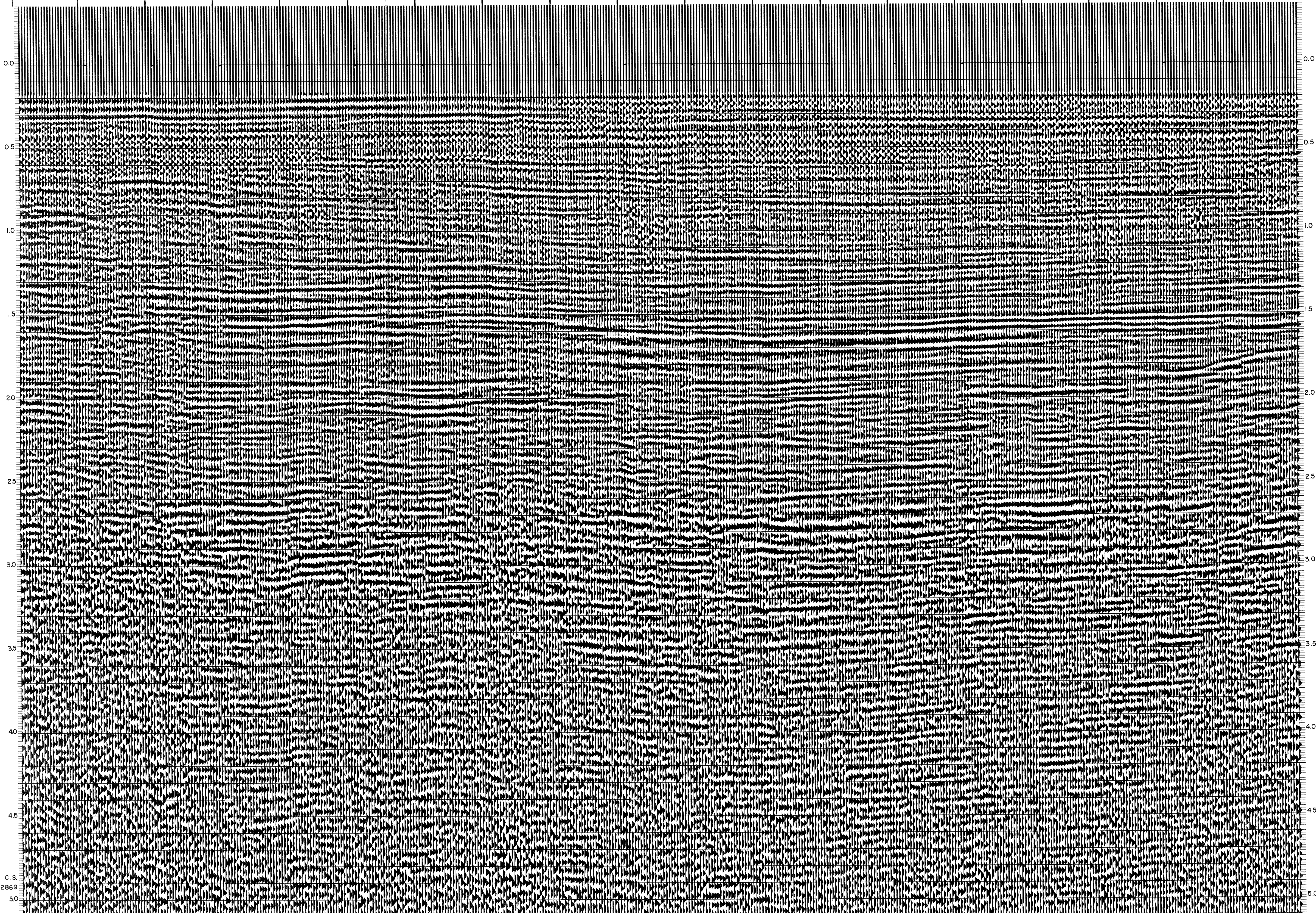
VELOCITY CHANGE

M-ITSI 5010

INTERSECTION
LINE S.P.
C-531 1616

M-ITSI 5033

105 99 111 99 117 99 123 99 129 97 135 90 141 91 147 91 153 91 159 88 165 86 171 84 177 84 183 87 189 88 195 84 201 84 207 84 213 84 WATER DEPTH IN METRES



C.S.
2869
50

