

THE AQUAPULSE SYSTEM

<b>AGIP</b> AREA: SICILY PROSPECT: ZONE 'C' WESTERN GEOPHYSICAL DIVISION OF LITTON INDUSTRIES MILAN DIGITAL CENTER	<b>RECORDING DATA</b> PARTY NO. 62 ENERGY SOURCE AQUAPULSE FILTER 10-80 HZ CABLE 1600 m GEOPHONES 32 CRYSTAL ELEMENT TAPERED ARRAY LEAD IN 765 FT. AMPLIFIER REDCOR BINARY GAIN CHARGE SIZE 4 GUNS POP DATE SHOT JUNE 1968		<b>PROCESSING INFORMATION</b> SAMPLE RATE 2 ms <b>DECONVOLUTION</b> DECONVOLVED BEFORE STACK AUTO CORR INT _____ TIME VARIANT _____ MAX APERTURE 0-360 ms TIME ZONE 0-5 sec ITERATIONS 2		<b>PROCESSING SEQUENCE</b> 1) EDIT - (SUM 3 POPS) 2) DECONVOLVED BEFORE STACK 3) NORMAL MOVE OUT 4) STACK 1200% 5) TV FILTER 6) PLAYBACK (UNFILTERED)
	<b>TIME VARIANT FILTER</b> TIME ZONE Hz dB OCT Hz dB OCT 0.200 - 0.425 20 18 60 18 0.425 - 0.825 15 12 50 12 0.825 - 1.800 10 12 50 12 1.800 - 2.350 10 12 35 12 2.350 - 5.000 5 6 30 6		REEL NO 73347 DATE AUGUST 1968		

LINE: C-568

S.P. 109 to S.P. 211

DATUM PLANE: SEA LEVEL

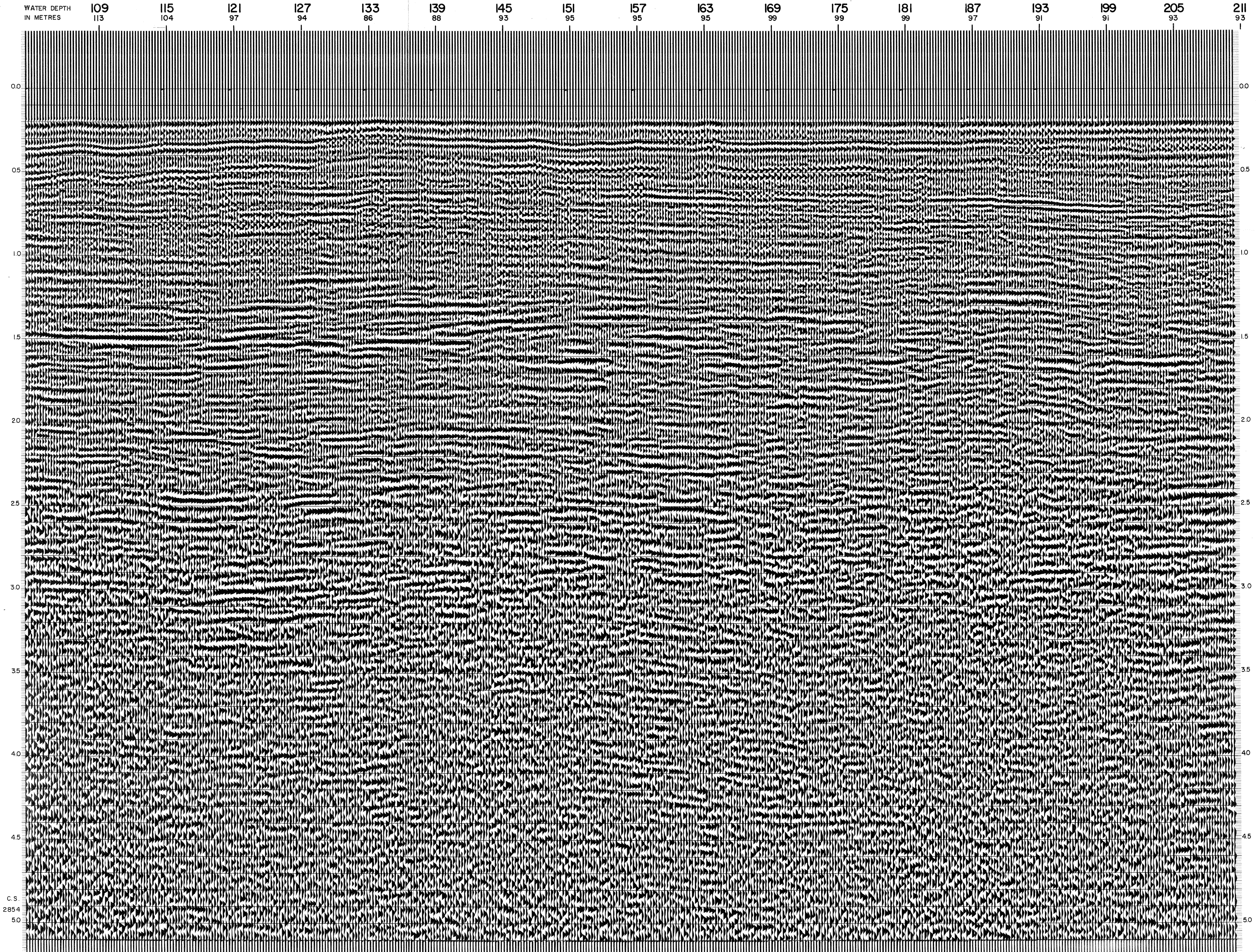
NORTHEAST

M-ITSI 5002

VELOCITY CHANGE

INTERSECTION LINE  
C-531 S.P. 1552

M-ITSI 5011



C.S.  
2854  
50