

AGIP

AREA: SICILY

PROSPECT: ZONE 'C'

WESTERN GEOPHYSICAL  
DIVISION OF CITICORP INC. S.P.  
MILAN DIGITAL CENTER

RECORDING DATA	
PURTY NO	62
ENERGY SOURCE	AQUAPULSE
FILTER	10-80 HZ
CABLE	1600 m
GEOPHONES	32 CRYSTAL ELEMENT TAPERED ARRAY
LEAD IN	765 FT
AMPLIFIER RECORD BINARY GAIN	
CHARGE SIZE	4 GUNS POP
DATE SHOT	JUNE 1968

PROCESSING INFORMATION	
SAMPLE RATE 4 ms	
DECONVOLUTION	
DECONVOLVED BEFORE STACK	
AUTO CORR INT	TIME VARIANT
MAX APERTURE	0-360 ms
TIME ZONE	0-5 sec
ITERATIONS	2
TIME VARIANT FILTER	
LC HC	
TIME ZONE Hz dB/OCT	Hz dB/OCT
0.200 - 0.425	20 18 60 18
0.425 - 0.825	15 12 50 12
0.825 - 1.800	10 12 50 12
1.800 - 2.350	10 12 35 12
2.350 - 5.000	5 6 30 6

PROCESSING SEQUENCE	
1) EDIT - (SUM 3 POPS)	
2) DECONVOLVED BEFORE STACK	
3) NORMAL MOVE OUT	
4) STACK 1200%	
5) TV FILTER	
6) PLAYBACK (UNFILTERED)	
REEL NO	73347
DATE	AUGUST 1968

LINE: C-568

S.P. 1 to S.P. 103

DATUM PLANE: SEA LEVEL

NORTHEAST

M-ITSI 5003

VELOCITY CHANGE

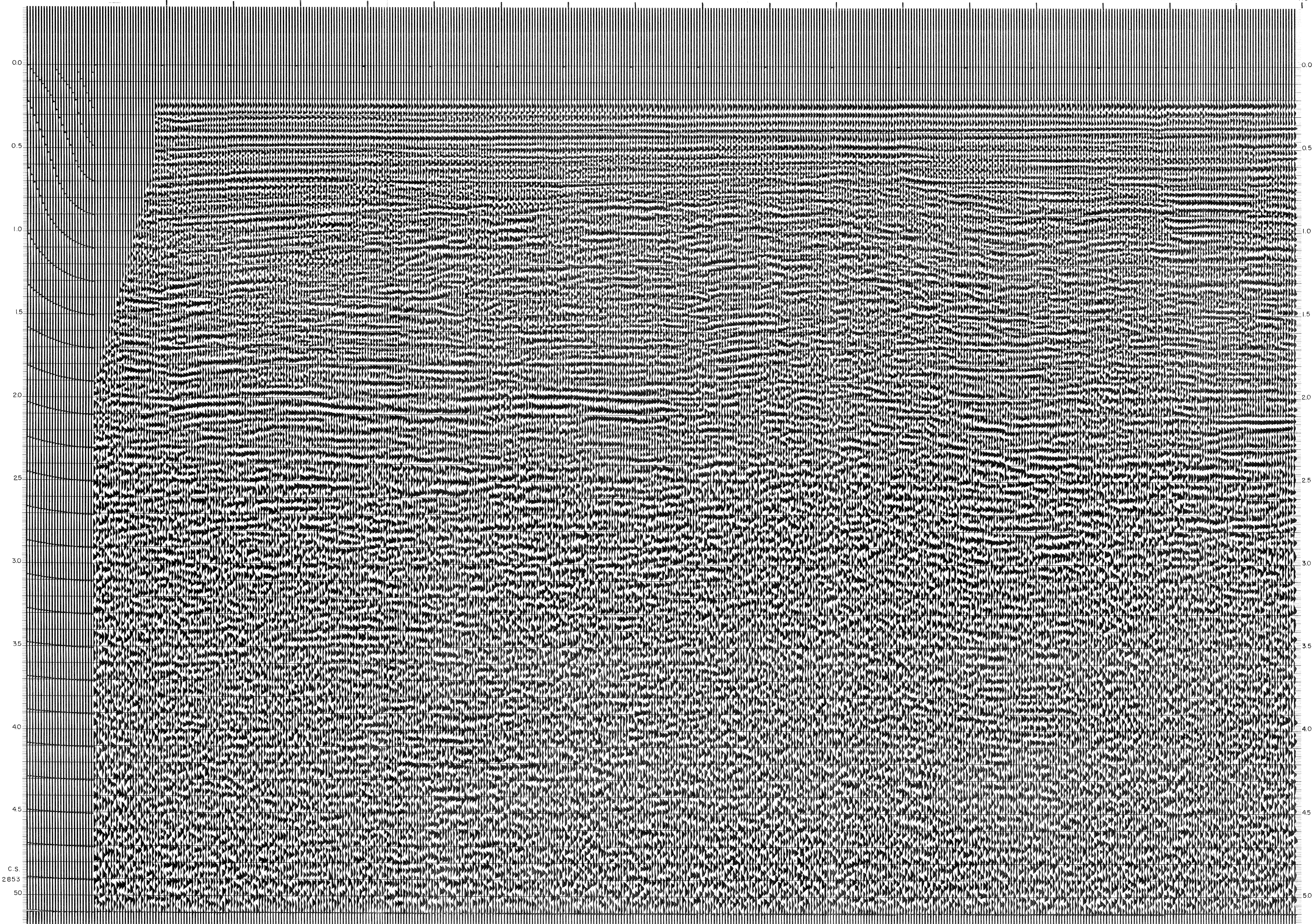
M-ITSI 5002

INTERSECTION LINE S.P. C-535 307

INTERSECTION LINE S.P. C-533 400

WATER DEPTH IN METRES

1 7 13 19 25 31 37 43 49 55 61 67 73 79 85 91 97 103



C.S. 2653