

AGIP AREA : SICILY PROSPECT : ZONE "C"	WESTERN GEOPHYSICAL <small>DIVISION OF LITTON INDUSTRIES</small> MILAN DIGITAL CENTER		
	RECORDING DATA PARTY NO. 62 ENERGY SOURCE AQUAPULSE FILTER 10-80 HZ CABLE 1600 m. GEOPHONES 32 CRYSTAL ELEMENT TAPERED ARRAY LEAD IN 760 FT AMPLIFIER REDCOR BINARY GAIN CHARGE SIZE 4 GUNS POP DATE SHOT JUNE 1968	PROCESSING INFORMATION SAMPLE RATE 2 ms. DECONVOLUTION DECONVOLVED BEFORE STACK AUTO CORR. INT. TIME VARIANT MAX. APERTURE 0-360 ms. TIME ZONE 0-5 Sec. ITERATIONS 2	
	TIME VARIANT FILTER L.C. H.C. TIME ZONE Hz dB OCT Hz dB OCT 0.100 - 0.350 20 - 18 60 - 18 0.350 - 0.650 15 - 12 50 - 12 0.650 - 1.100 10 - 12 45 - 12 1.100 - 1.800 10 - 12 40 - 12 1.800 - 5.000 5 - 6 30 - 6		REEL NO. 73176 DATE SEPTEMBER 1968

LINE : C-566

S.P. 267 to S.P. 339^D

DATUM PLANE : SEA LEVEL

NORTHEAST

INTERSECTION
LINE S.P.
C-525 110

M-ITSI 5030

VELOCITY CHANGE

M-ITSI 5033

VELOCITY CHANGE

M-ITSI 5010

WATER DEPTH
IN METERS

267
77

273
73

279
73

285
69

291
64

297
60

303
57

309
53

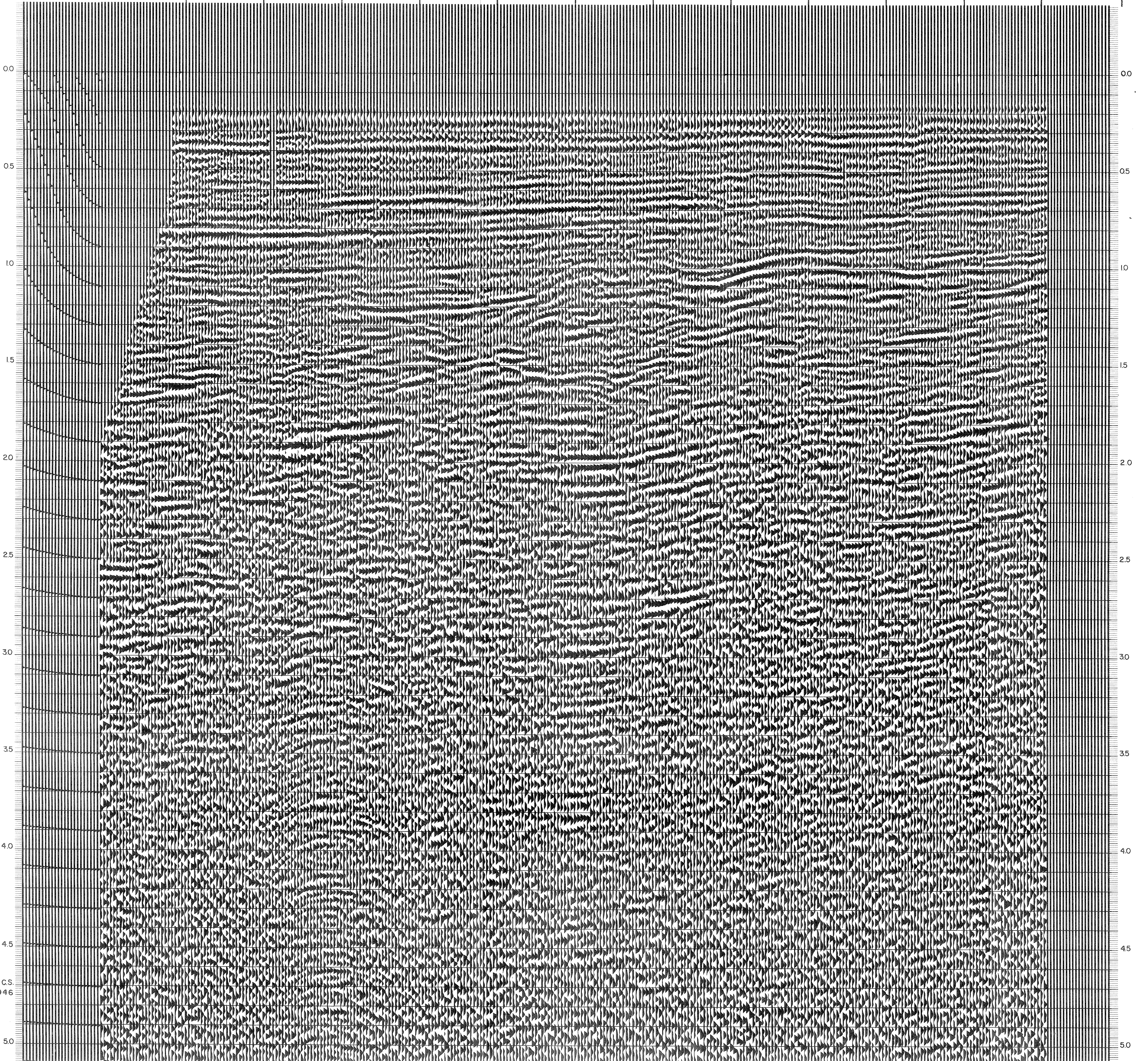
315
49

321
46

327
41

333
37

339^D
37



C.S.
2946