

AREA SICILY

PROSPECT ZONE 'C'

WESTERN GEOPHYSICAL

RECORDING DATA

WATER DEPTH 765 FT
DATE JUNE 1968

PROCESSING INFORMATION

DECONVOLUTION

0-400 5
4

TIME VARIANT FILTER

0.150-0.450	20	18	60	18
0.450-0.675	10	12	50	12
0.675-1.250	10	12	35	12
1.250-5.000	5	6	30	6

PROCESSING SEQUENCE

TV FILTER
7 3 167
JULY 1968

LINE: C-562

SP 193 to SP 289 D

NORTHEAST

STATION PLANE SEA LEVEL

M - ITSI 5011

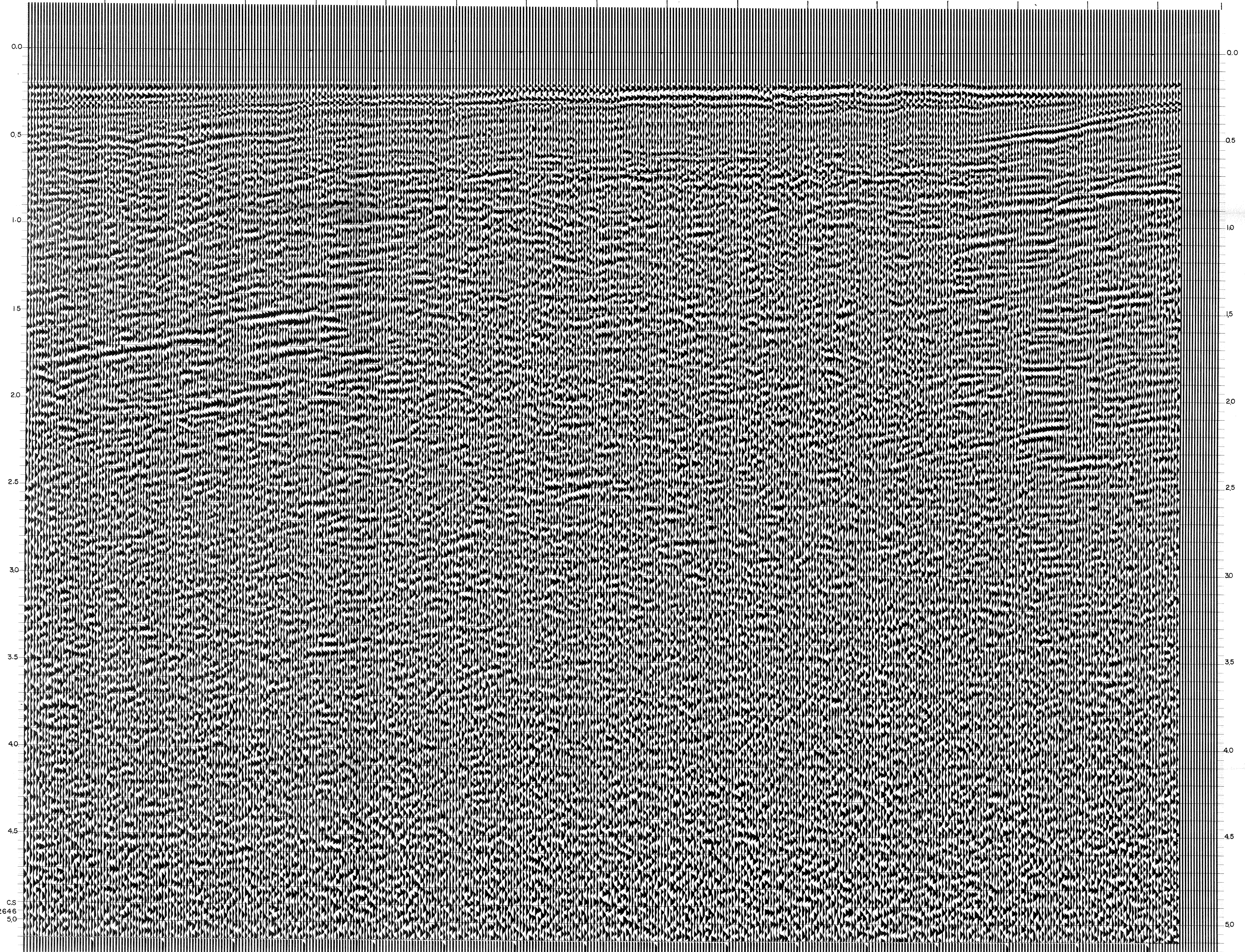
VELOCITY CHANGE

M - ITSI 5010

INTERSECTION LINE S.P.
C-531 1323

INTERSECTION LINE S.P.
C-529 1393

WATER DEPTH IN METRES 193 199 205 211 217 223 229 235 241 247 253 259 265 271 277 283 289D
104 101 97 95 93 90 86 82 80 77 73 69 66 60 53 48



C.S.
2646
5.0