



THE AQUAPULSE SYSTEM

LINE: C-560 Ext

S.P. 25<sup>D</sup> to S.P. 1<sup>D</sup>

DATUM PLANE : SEA LEVEL

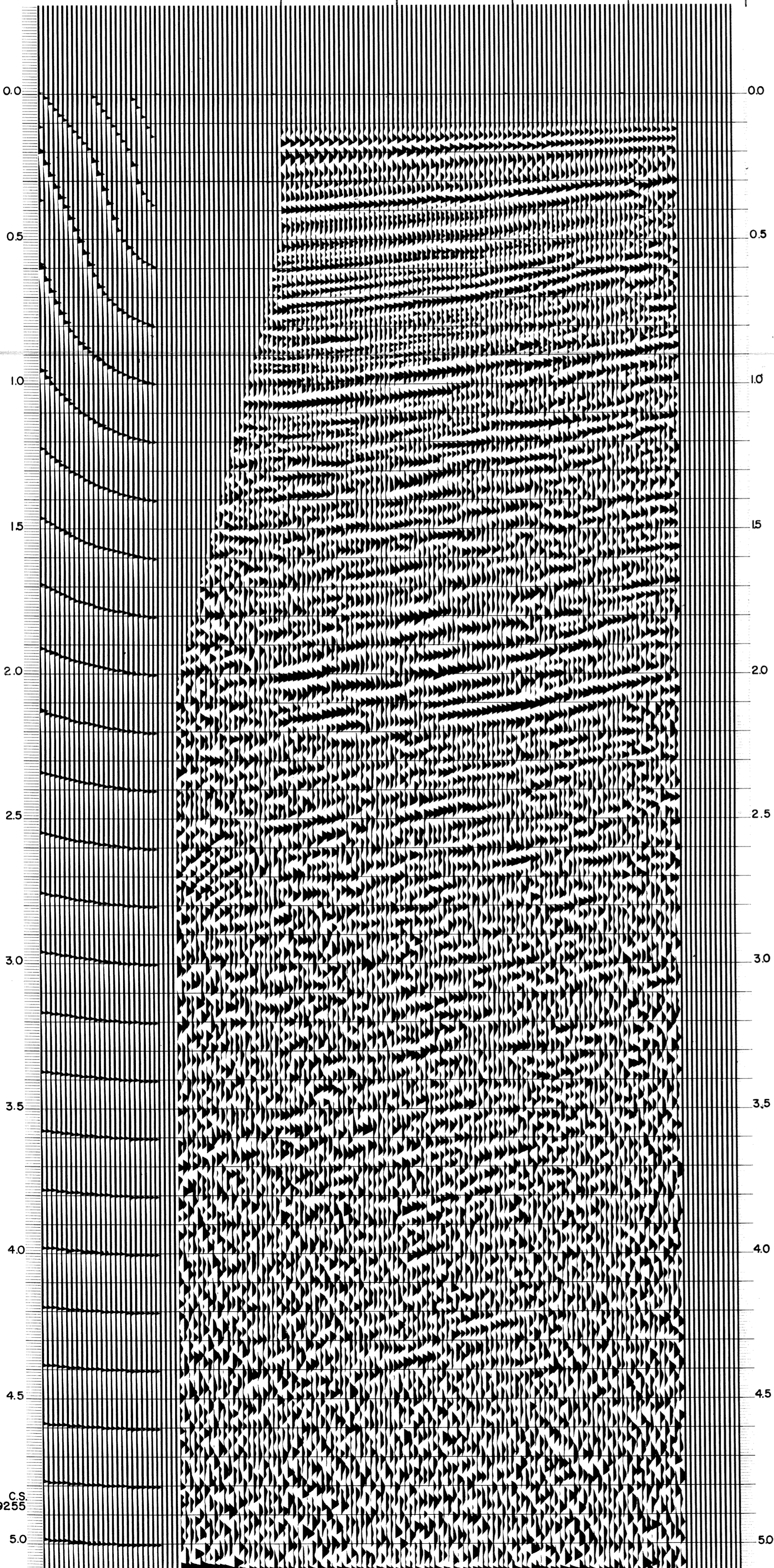
NORTHEAST

M-ITSI 5062

INTERSECTION LINE S.P.  
C-537W 502

25<sup>D</sup> 19 13 7 1<sup>D</sup>  
- 27 22 17 -

WATER DEPTH  
IN METRES



AGIP

AREA : GELA-NOTO

PROSPECT : ZONE "C"

WESTERN  
GEOPHYSICAL  
DIVISION OF LITTON INDUSTRIES  
MILAN DIGITAL CENTER

RECORDING DATA

PARTY NO. 62  
ENERGY SOURCE AQUAPULSE  
FILTER 10-80 HZ  
CABLE 1600 m.  
GEOPHONES 32 CRYSTAL ELEMENT  
TAPERED ARRAY  
LEAD IN 760'  
AMPLIFIER REDCOR BINARY GAIN  
CHARGE SIZE 4 GUNS POP  
DATE SHOT MARCH 1969

PROCESSING INFORMATION

DECONVOLUTION

SAMPLE RATE 4ms

DECONVOLVED BEFORE STACK

AUTO CORR. INT. TIME VARIANT  
MAX. APERTURE 0-400. m.s.  
TIME ZONE 0-5 Sec  
ITERATIONS 2

TIME VARIANT FILTER

L.C. H.C.  
TIME ZONE Hz DB OCT Hz DB OCT  
0.125 - 0.300 20 60 5  
0.300 - 1.000 10 60 6  
1.000 - 1.300 10 50 6  
1.300 - 1.800 10 35 6  
1.800 - 5.000 5 30 6

PROCESSING SEQUENCE

- 1) EDIT - (SUM 4 POPS)
- 2) DECONVOLVED BEFORE STACK
- 3) NORMAL MOVE OUT
- 4) 1200 % STACK
- 5) T.V. FILTER
- 6) PLAYBACK (UNFILTERED)
- 7) VELOCITY ANALYSIS

REEL NO. 75942  
DATE JUNE 1969

CS  
9255