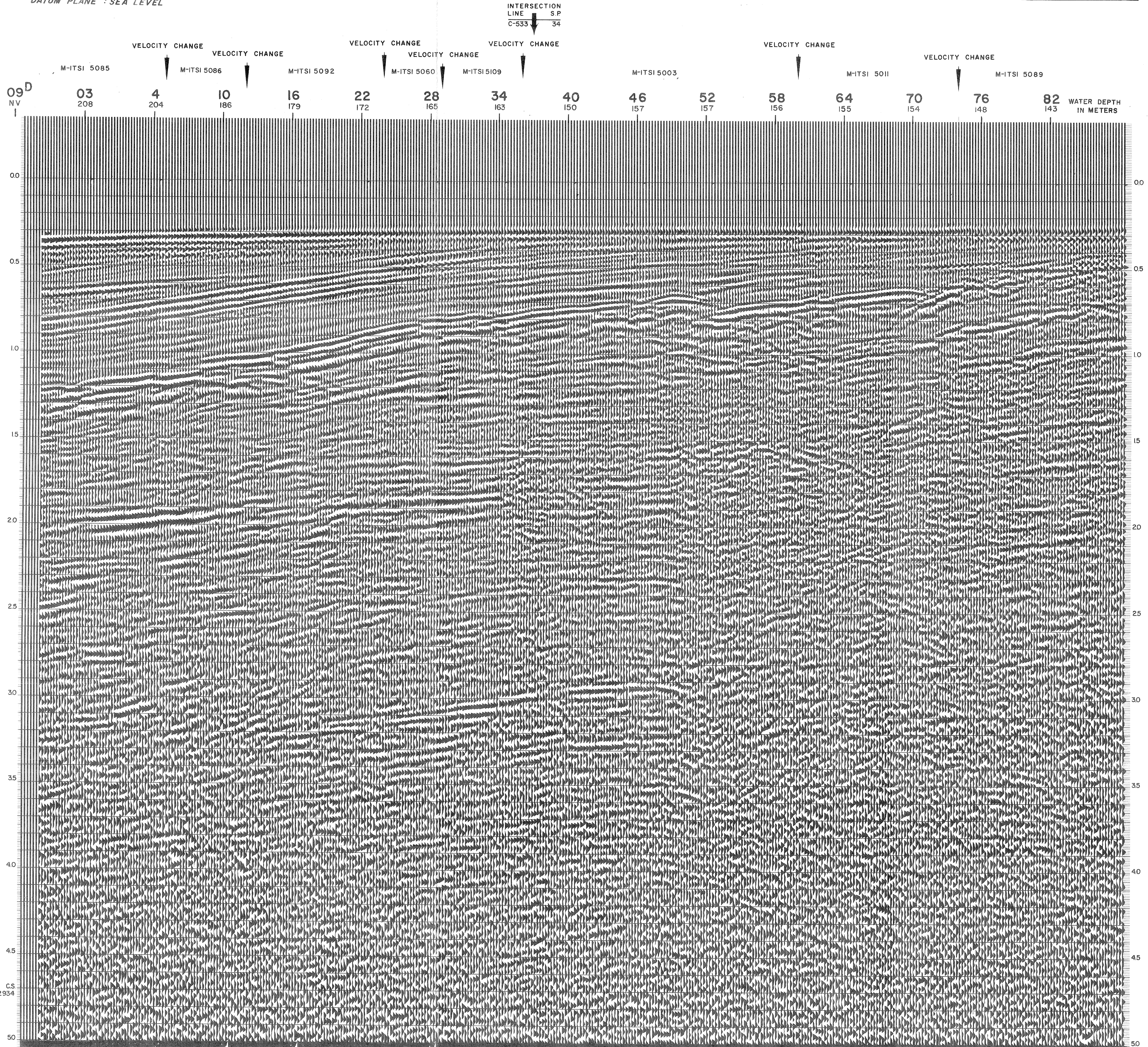


ACIP		AREA : SICILY		PROSPECT : ZONE "C"		WESTERN GEOPHYSICAL <small>DIVISION OF LITTON INDUSTRIES</small> MILAN DIGITAL CENTER			
RECORDING DATA PARTY NO. 62 ENERGY SOURCE AQUAPULSE FILTER 10-80 HZ CABLE 1600 m. GEOPHONES 32 CRYSTAL ELEMENT TAPERED ARRAY LEAD IN 760 FT AMPLIFIER REDCOR BINARY GAIN CHARGE SIZE 4 GUNS POP DATE SHOT JUNE 1968		PROCESSING INFORMATION SAMPLE RATE 2 ms. DECONVOLUTION DECONVOLVED BEFORE STACK AUTO CORR. INT. TIME VARIANT MAX. APERTURE 0-360 ms. TIME ZONE 0-5 Sec. ITERATIONS 2				TIME VARIANT FILTER L.C. H.C. TIME ZONE Hz dB OCT Hz dB OCT 0100 - 0450 20 - 18 60 - 18 0450 - 0650 15 - 12 50 - 12 0650 - 1400 10 - 12 45 - 12 1400 - 2300 10 - 12 40 - 12 2300 - 5000 5 - 6 30 - 6		PROCESSING SEQUENCE 1) EDIT - (SUM 4 POPS) 2) DECONVOLVED BEFORE STACK 3) NORMAL MOVE OUT 4) 1200 % STACK 5) TV FILTER 6) PLAYBACK (UNFILTERED) REEL NO. 72539 DATE SEPTEMBER 1968	

LINE: C-558

S.P. 09^D to S.P. 82

DATUM PLANE : SEA LEVEL



C.S. 2934