

THE AQUAPULSE SYSTEM



AREA : GELA-NOTO

PROSPECT : ZONE "C"

WESTERN  
GEOPHYSICAL  
DIVISION OF LITTON INDUSTRIES  
MILAN DIGITAL CENTER

RECORDING DATA

PARTY NO. 62  
ENERGY SOURCE AQUAPULSE  
FILTER 10-80 HZ  
CABLE 1600 m.  
GEOPHONES 32 CRYSTAL ELEMENT  
TAPERED ARRAY  
LEAD IN 760'  
AMPLIFIER REDCOR BINARY GAIN  
CHARGE SIZE 4 GUNS POP  
DATE SHOT MARCH 1969

PROCESSING INFORMATION

SAMPLE RATE 4ms

DECONVOLUTION

DECONVOLVED BEFORE STACK

AUTO CORR. INT. TIME VARIANT  
MAX. APERTURE 0-400 m.  
TIME ZONE 0-5 Sec.  
ITERATIONS 2

TIME VARIANT FILTER

TIME ZONE	L.C.		H.C.	
	Hz	dB	OCT	Hz
0125 - 0300	20	6	60	6
0300 - 0900	10	6	60	6
0900 - 1300	10	6	50	6
1300 - 1800	10	6	35	6
1800 - 5000	5	6	30	6

PROCESSING SEQUENCE

- 1) EDIT - (SUM 4 POPS)
- 2) DECONVOLVED BEFORE STACK
- 3) NORMAL MOVE OUT
- 4) 1200 % STACK
- 5) T.V. FILTER
- 6) PLAYBACK (UNFILTERED)
- ▼ VELOCITY ANALYSIS

REEL NO. 76535  
DATE JUNE 1969

LINE: C-552 Ext.

S.P. 79 to S.P. 7D

NORTHEAST

DATUM PLANE : SEA LEVEL

INTERSECTION  
LINE S.P.  
C-537W 222

M-ITSI 5069

VELOCITY CHANGE

INTERSECTION  
LINE S.P.  
C-527 203

M-ITSI 5068

VELOCITY CHANGE

INTERSECTION  
LINE S.P.  
C-545 199

M-ITSI 5134

INTERSECTION  
LINE S.P.  
C-547 164

WATER DEPTH  
IN METRES

79  
90

73  
80

67  
71

61  
62

55  
51

49  
42

43  
35

37  
27

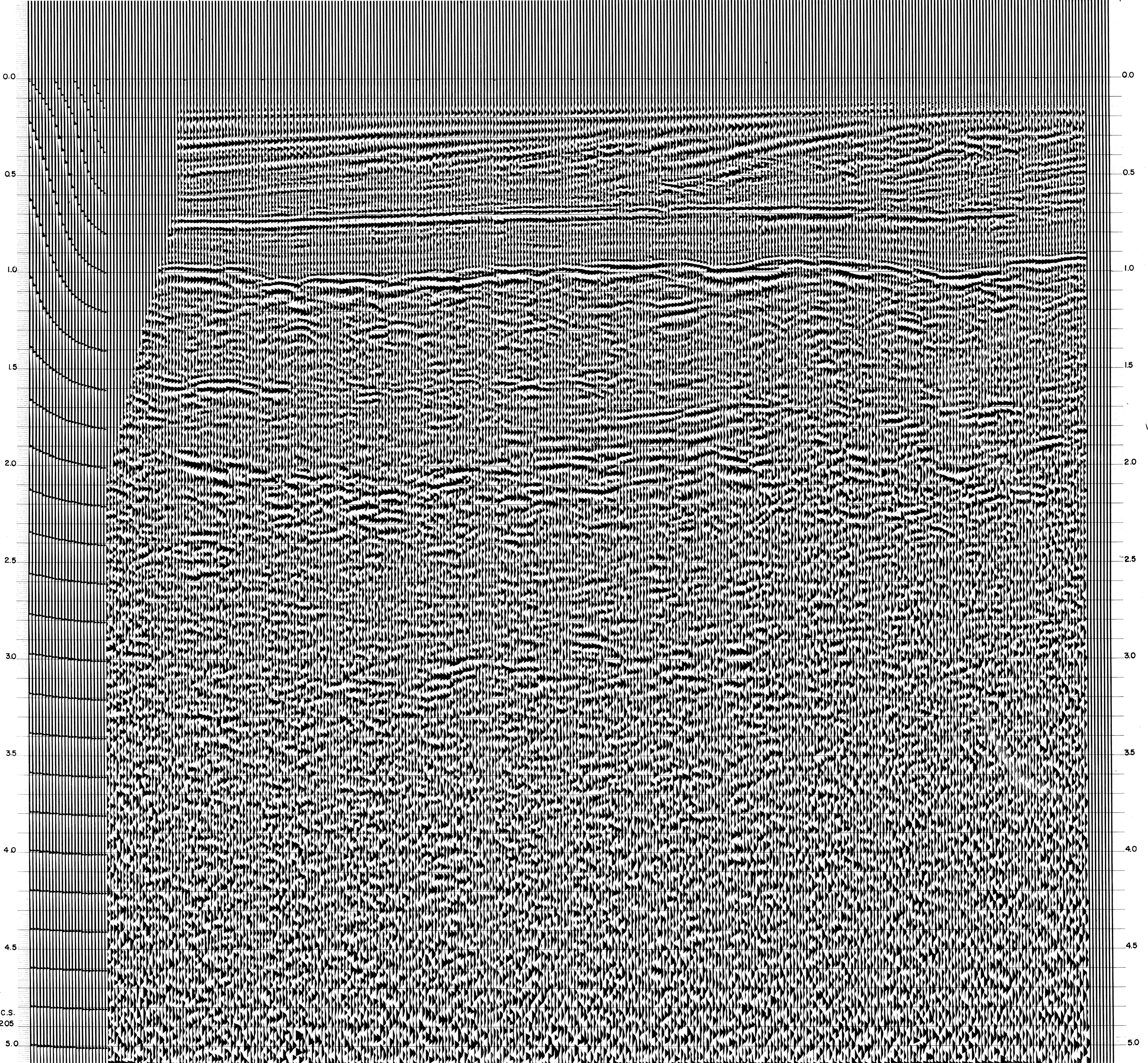
31  
20

25  
18

19  
16

13  
14

7D  
1



C.S.  
9205

5.0

5.0