

AGIP		AREA: SICILY		PROSPECT: ZONE 'C'		WESTERN GEOPHYSICAL MILAN DIGITAL CENTER	
RECORDING DATA		PROCESSING INFORMATION				PROCESSING SEQUENCE	
PARTY NO. 62 ENERGY SOURCE: AQUAPULSE FILTER: 10-80 HZ CABLE: 1600 m GEOPHONES: 32 CRYSTAL ELEMENT TAPERED ARRAY LEAD IN: 769 FT. AMPLIFIER RECORD BINARY GAIN CHARGE SIZE: 4 GUNS POP DATE SHOT: JUNE 1968		DECONVOLUTION DECONVOLVED BEFORE STACK AUTO CORR INT: _____ TIME VARIANT: _____ MAX APERTURE: 67360 ms TIME ZONE: 0-5 sec ITERATIONS: 4		TIME VARIANT FILTER LC HC TIME ZONE Hz dB OCT Hz dB OCT 0.700-0.925 20 18 60 18 0.925-1.325 15 12 50 12 1.325-2.075 10 12 50 12 2.075-2.550 10 12 35 12 2.550-5.000 5 6 30 12		1) EDIT - SUM 3 POPS 2) DECONVOLVED BEFORE STACK 3) NORMAL MOVE OUT 4) STACK 120% 5) TV FILTER 6) PLAYBACK (UNFILTERED) REEL NO. 73 318 DATE: AUGUST 1968	

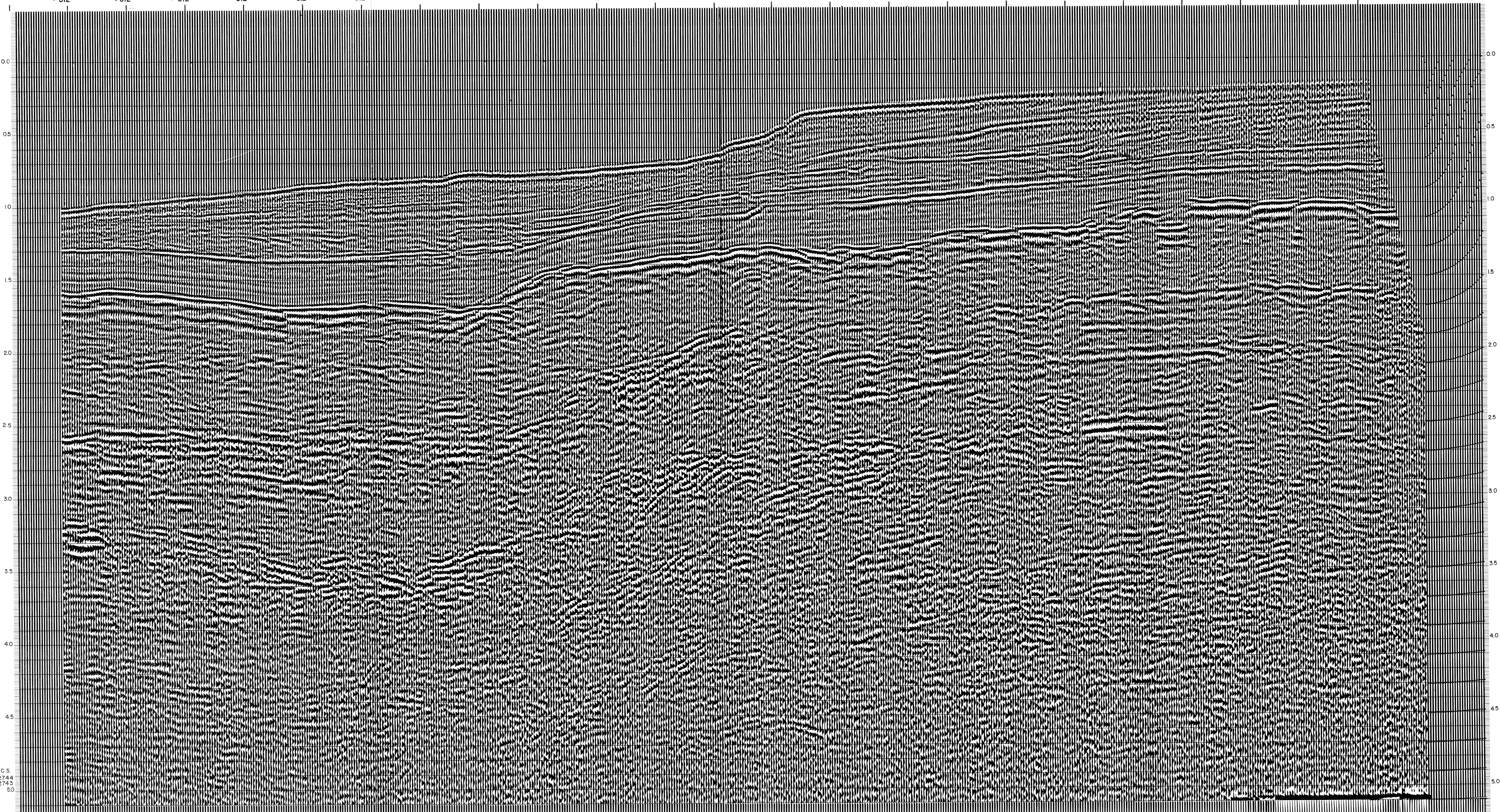
LINE: C-552

S.P. 012^D to S.P. 127

DATUM PLANE: SEA LEVEL



M-ITSI 5025 VELOCITY CHANGE M-ITSI 5028 VELOCITY CHANGE M-ITSI 5027 VELOCITY CHANGE M-ITSI 5026 VELOCITY CHANGE M-ITSI 5021 VELOCITY CHANGE M-ITSI 5024 VELOCITY CHANGE M-ITSI 5005 VELOCITY CHANGE M-ITSI 5015
 INTERSECTION LINE S.P. C-531 973 INTERSECTION LINE S.P. C-529 1043
 012^D 06 1 7 13 19 25 31 37 43 49 55 61 67 73 79 85 91 97 103 109 115 121 127 WATER DEPTH IN METRES
 >512 >512 >512 >512 >512 >512 >512 >512 >512 >512 >512 >512 402 212 186 170 146 132 117 113 106 99 91



C.S.
2744
2743
50