

THE AQUAPULSE SYSTEM

LINE: C-543

S.P. 1 to S.P. 121

DATUM PLANE: SEA LEVEL

SOUTHEAST

AGIP		AREA: GELA-NOTO	PROSPECT: ZONE "C"	WESTERN GEOPHYSICAL DIVISION OF LITTON INDUSTRIES MILAN DIGITAL CENTER
RECORDING DATA		PROCESSING INFORMATION		PROCESSING SEQUENCE
PARTY NO. 62		SAMPLE RATE 4ms		1) EDIT - (SUM 4 POPS)
ENERGY SOURCE AQUAPULSE		DECONVOLUTION		2) DECONVOLVED BEFORE STACK
FILTER 10-80 HZ		TIME VARIANT FILTER		3) NORMAL MOVE OUT
CABLE 1600 m.		L.C. H.C.		4) 1200 % STACK
GEOPHONES 32 CRYSTAL ELEMENT		TIME ZONE Hz dB OCT Hz dB OCT		5) TV FILTER
TAPERED ARRAY		0.100 - 0.500 20 12 60 12		6) PLAYBACK (UNFILTERED)
LEAD IN 760'		0.500 - 1.000 15 12 50 12		7) VELOCITY ANALYSIS
AMPLIFIER REDCOR BINARY GAIN		1.000 - 1.500 10 12 50 12		
CHARGE SIZE 4 GUNS POP		1.500 - 2.200 10 12 3.5 12		
DATE SHOT MARCH 1969		2.200 - 5.000 5 12 3.0 12		
		ITERATIONS 2		REEL NO. 75882
				DATE MAY 1969

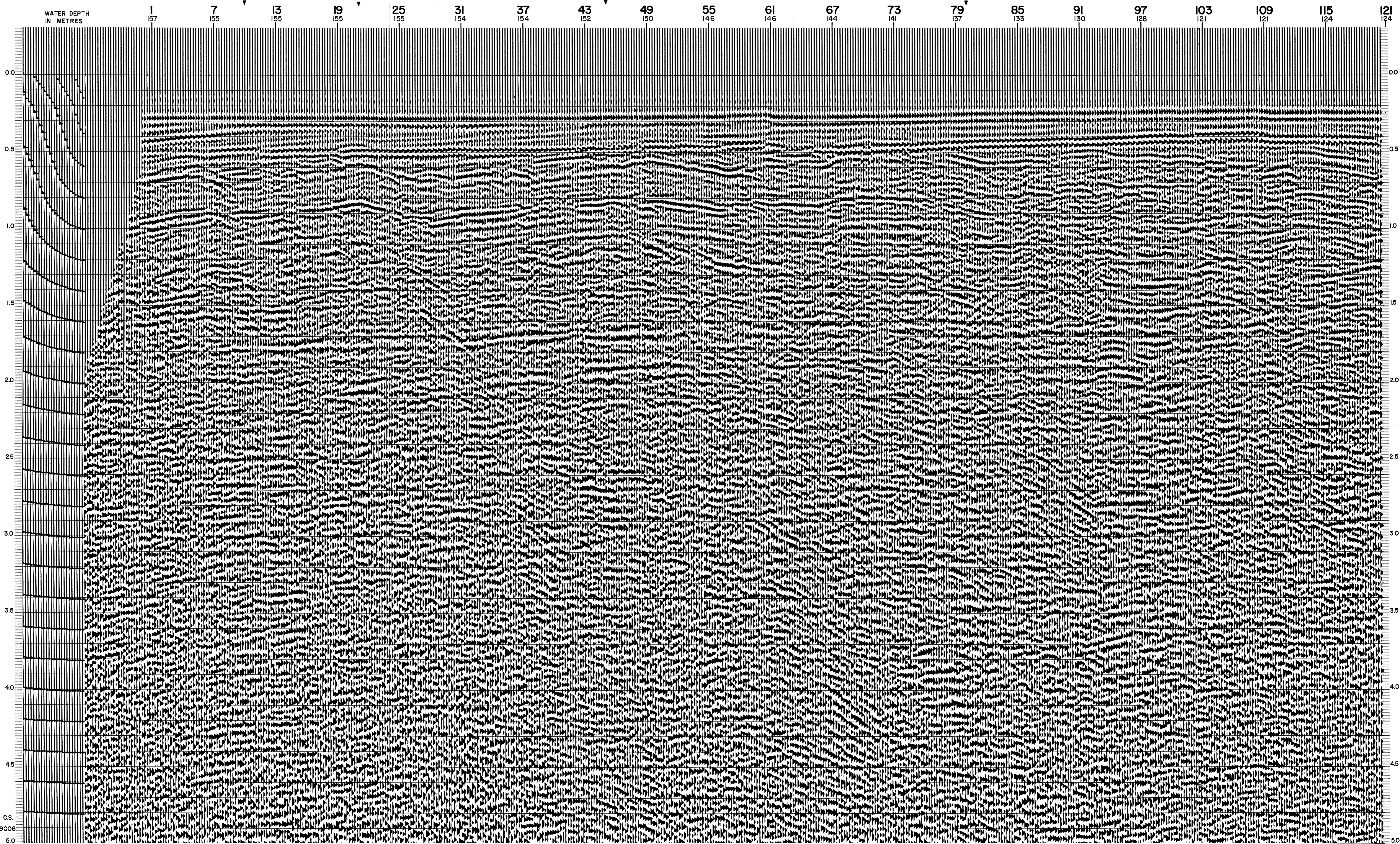
M - ITSI 513

INTERSECTION
LINE S.P.
C-598 128

INTERSECTION
LINE S.P.
C-558 77

INTERSECTION
LINE S.P.
C-596 146

WATER DEPTH
IN METRES



9008
5.0

5.0