

AREA: SICILY

PROSPECT: ZONE 'C'

WESTERN GEOPHYSICAL MILAN DIGITAL CENTER

RECORDING DATA

PARTY NO. 62
ENERGY SOURCE AQUAPULSE
FILTER 10-80 Hz
CABLE 1600 m
GEOPHONES 32 CRYSTAL ELEMENT
TAPERED ARRAY
LEAD IN 765 FT
AMPLIFIER RECORD BINARY GAIN
CHARGE SIZE 4 GUNS 30F
DATE SHOT JUNE 68

PROCESSING INFORMATION

DECONVOLUTION

DECONVOLVED BEFORE STACK

AUTO CORR INT _____ TIME VARIANT
MAX APERTURE 0-560 ms
TIME ZONE _____
OPERATIONS 2

TIME VARIANT FILTER

LC HC
TIME ZONE Hz dB OCT Hz dB OCT

0.00 - 0.400	20	-	18	60	-	18
0.400 - 0.750	15	-	12	50	-	12
0.750 - 1.600	10	-	12	45	-	12
1.600 - 2.500	10	-	12	40	-	12
2.500 - 5.000	5	-	6	30	-	6

PROCESSING SEQUENCE

- 1) EDIT (SUM 3 POPS)
- 2) DECONVOLVED BEFORE STACK
- 3) NORMAL MOVE OUT
- 4) 1200% STACK
- 5) TV FILTER
- 6) PLAYBACK (UNFILTERED)

REF. N 73620
DATE SEPTEMBER 68

LINE: C-542

S.P. I to S.P. 103 D

NORTH EAST

DATUM PLANE: SEA LEVEL

INTERSECTION LINE S.P. C-531 611

VELOCITY CHANGE VELOCITY CHANGE VELOCITY CHANGE VELOCITY CHANGE VELOCITY CHANGE VELOCITY CHANGE

VELOCITY CHANGE VELOCITY CHANGE VELOCITY CHANGE

INTERSECTION LINE S.P. C-529 680

WATER DEPTH IN METERS

M-ITSI 5118 307

M-ITSI 5117 241

M-ITSI 5083 170

M-ITSI 5087 123

M-ITSI 5084 91

M-ITSI 5085 77

M-ITSI 5004 71

43 66

49 60

M-ITSI 5061 55

61 49

67 46

M-ITSI 5011 42

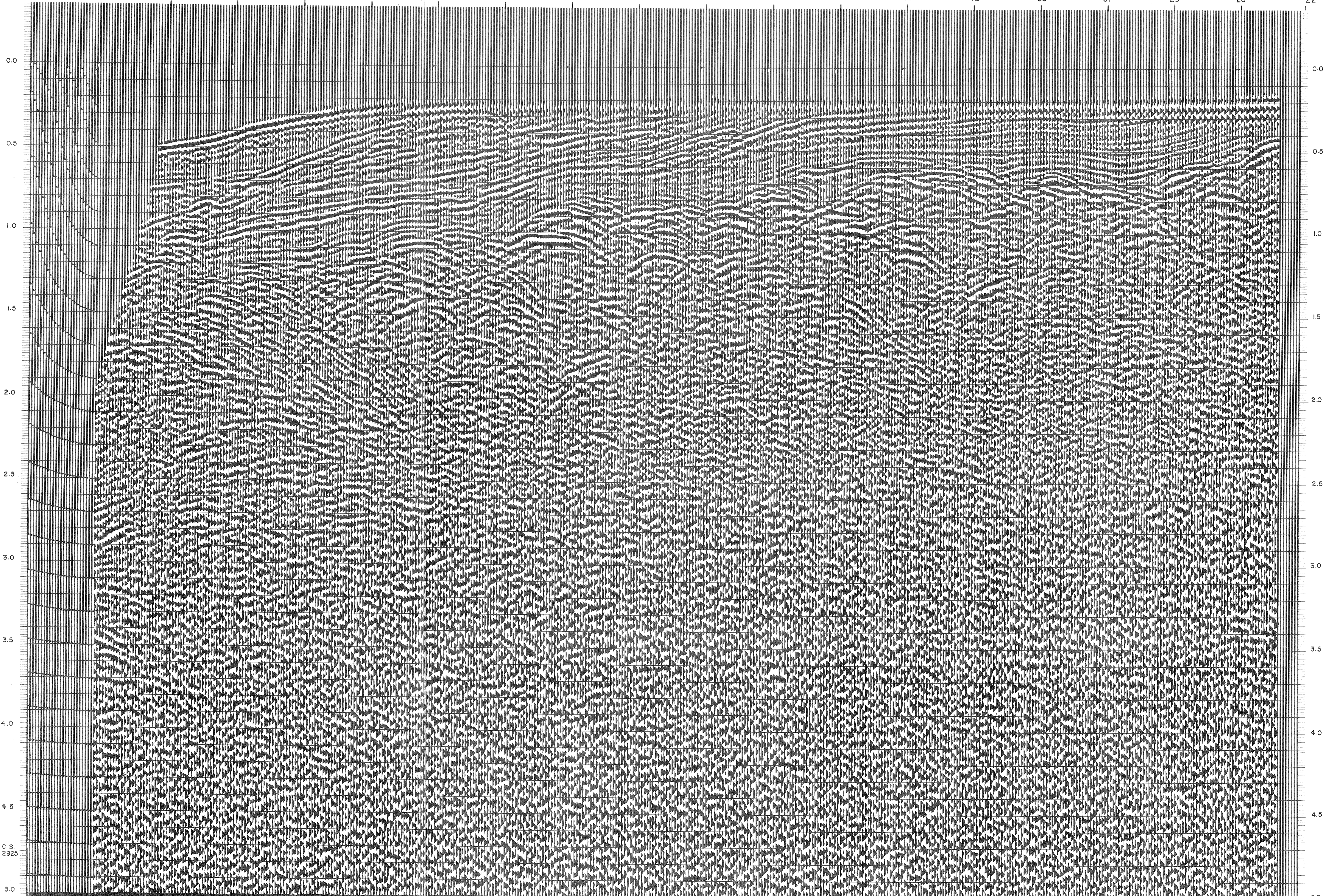
M-ITSI 5113 38

85 31

91 29

M-ITSI 5112 26

103 D 22



C.S. 2925