

AGIP		AREA : GELA-NOTO		PROSPECT : ZONE "C"		WESTERN GEOPHYSICAL <small>DIVISION OF LITTON INDUSTRIES</small> MILAN DIGITAL CENTER			
RECORDING DATA PARTY NO. 62 ENERGY SOURCE AQUAPULSE FILTER 10-80 HZ CABLE 1600 m. GEOPHONES 32 CRYSTAL ELEMENT TAPERED ARRAY LEAD IN 760' AMPLIFIER REDCOR BINARY GAIN CHARGE SIZE 4 GUNS POP DATE SHOT MARCH 1969		PROCESSING INFORMATION SAMPLE RATE 4ms DECONVOLUTION DECONVOLVED BEFORE STACK AUTO CORR. INT. TIME VARIANT MAX. APERTURE 0-400 ms. TIME ZONE 0-5 Sec. ITERATIONS 2				TIME VARIANT FILTER L.C. H.C. TIME ZONE Hz dB OCT Hz dB OCT 0.150 - 0.300 20 6 60 12 0.300 - 0.600 15 6 50 12 0.600 - 1.800 10 6 50 12 1.800 - 3.000 10 6 35 12 3.000 - 9.000 5 6 30 12		PROCESSING SEQUENCE 1) EDIT - (SUM 4 POPS) 2) DECONVOLVED BEFORE STACK 3) NORMAL MOVE OUT 4) 1200 % STACK 5) TV FILTER 6) PLAYBACK (UNFILTERED) V = VELOCITY ANALYSIS REEL NO. 72683 DATE MAY 1969	

LINE: C-541

S.P. 487 to S.P. 601

DATUM PLANE : SEA LEVEL

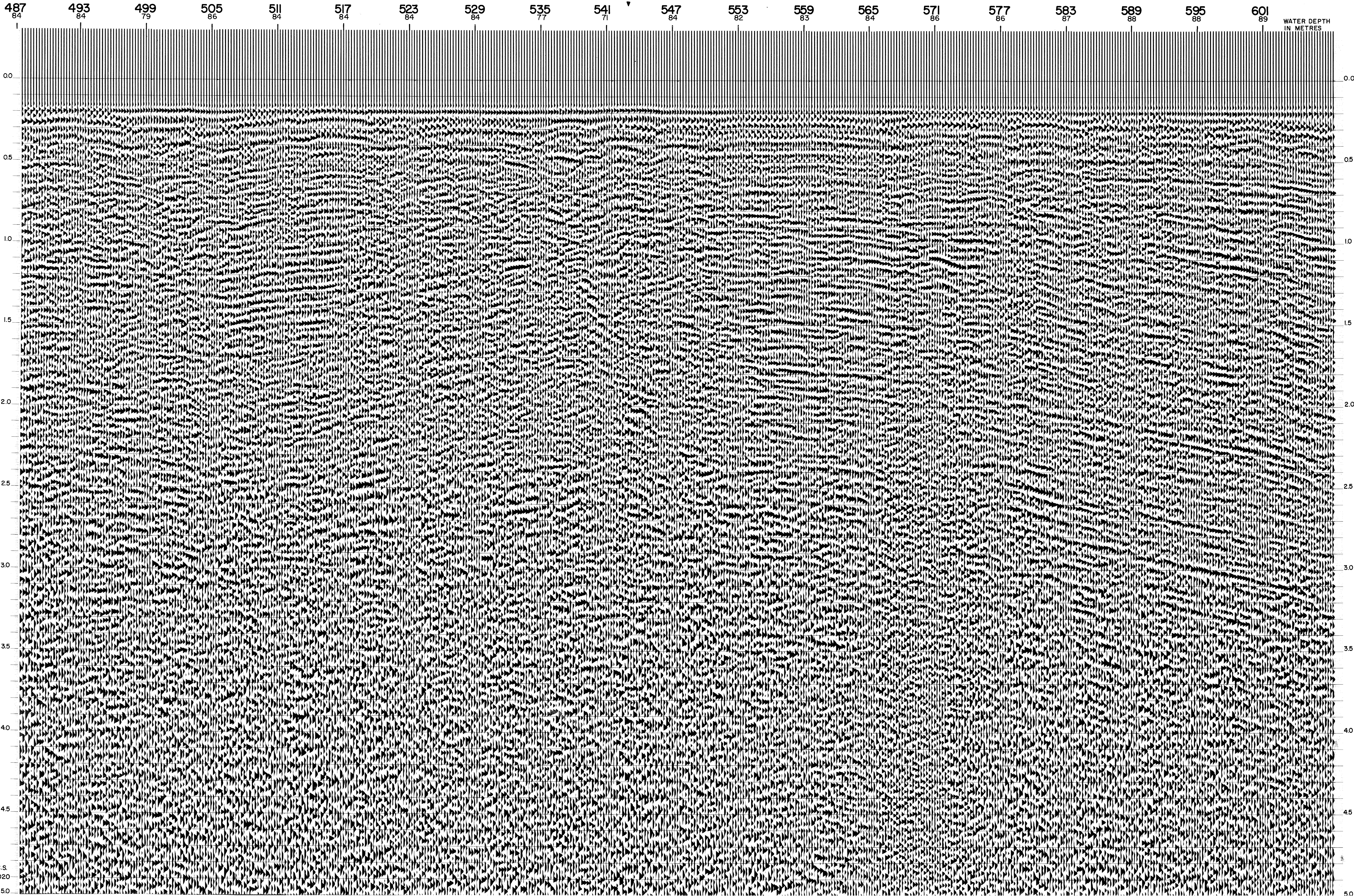
M - I TSI 5033



INTERSECTION
LINE S.P.
C-560 196

INTERSECTION
LINE S.P.
C-594 83

INTERSECTION
LINE S.P.
C-562 230



C.S. 9020