

THE AQUAPULSE SYSTEM

AGIP AREA: GELA-NOTO PROSPECT: ZONE "C"		WESTERN GEOPHYSICAL DIVISION OF LITTON INDUSTRIES MILAN DIGITAL CENTER
RECORDING DATA PARTY NO. 62 ENERGY SOURCE AQUAPULSE FILTER 10-80 HZ CABLE 1600 m. GEOPHONES 32 CRYSTAL ELEMENT TAPERED ARRAY LEAD IN 760'		PROCESSING INFORMATION SAMPLE RATE 4ms
DECONVOLUTION DECONVOLVED BEFORE STACK AUTO CORR. INT. TIME VARIANT MAX. APERTURE 0-400 ms. TIME ZONE 0-5 Sec. ITERATIONS 2		TIME VARIANT FILTER L.C. H.C. TIME ZONE Hz dB OCT Hz dB OCT 0.125 - 0.400 20 6 60 6 0.400 - 0.700 15 6 50 6 0.700 - 0.900 10 6 50 6 0.900 - 1.500 10 6 35 6 1.500 - 5.000 5 6 30 6
AMPLIFIER REDCOR BINARY GAIN CHARGE SIZE 4 GUNS POP DATE SHOT MARCH 1969		PROCESSING SEQUENCE 1) EDIT - (SUM 4 POPS) 2) DECONVOLVED BEFORE STACK 3) NORMAL MOVE OUT 4) 1200 % STACK 5) TV FILTER 6) PLAYBACK (UNFILTERED) V = VELOCITY ANALYSIS REEL NO. 76.572 DATE MAY 1969

LINE: C-537W

S.P. 427^D to S.P. 511

DATUM PLANE : SEA LEVEL

SOUTHEAST

M-ITSI 5210

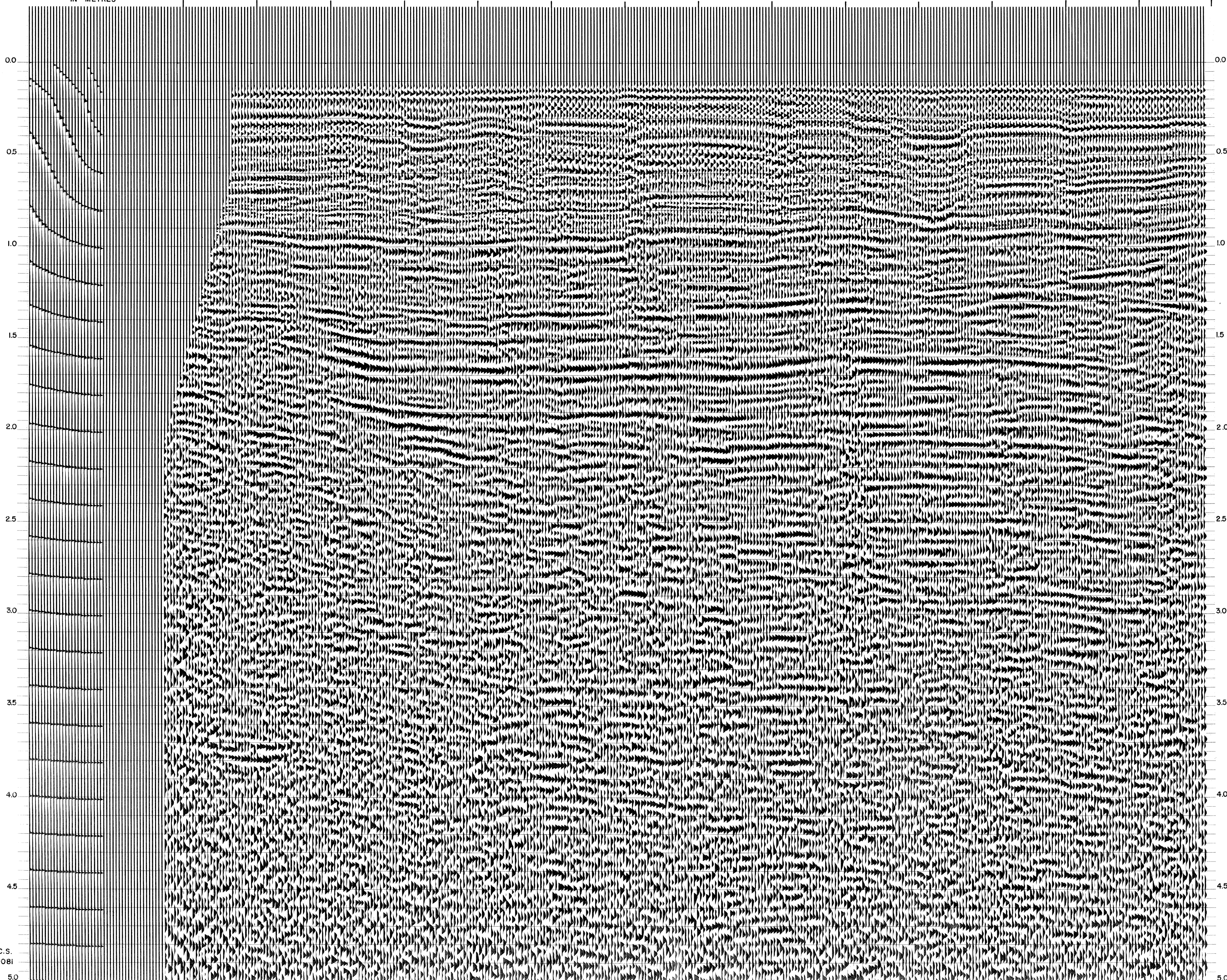
INTERSECTION LINE S.P.
C-558 16
Ext.

INTERSECTION LINE S.P.
C-596 13
Ext.

INTERSECTION LINE S.P.
C-560 13
Ext.

WATER DEPTH IN METRES

427^D 433 439 445 451 457 463 469 475 481 487 493 499 505 511



C.S.
9081