

AREA: SICILY

PROSPECT: ZONE 'c'



MILAN DIGITAL CENTER

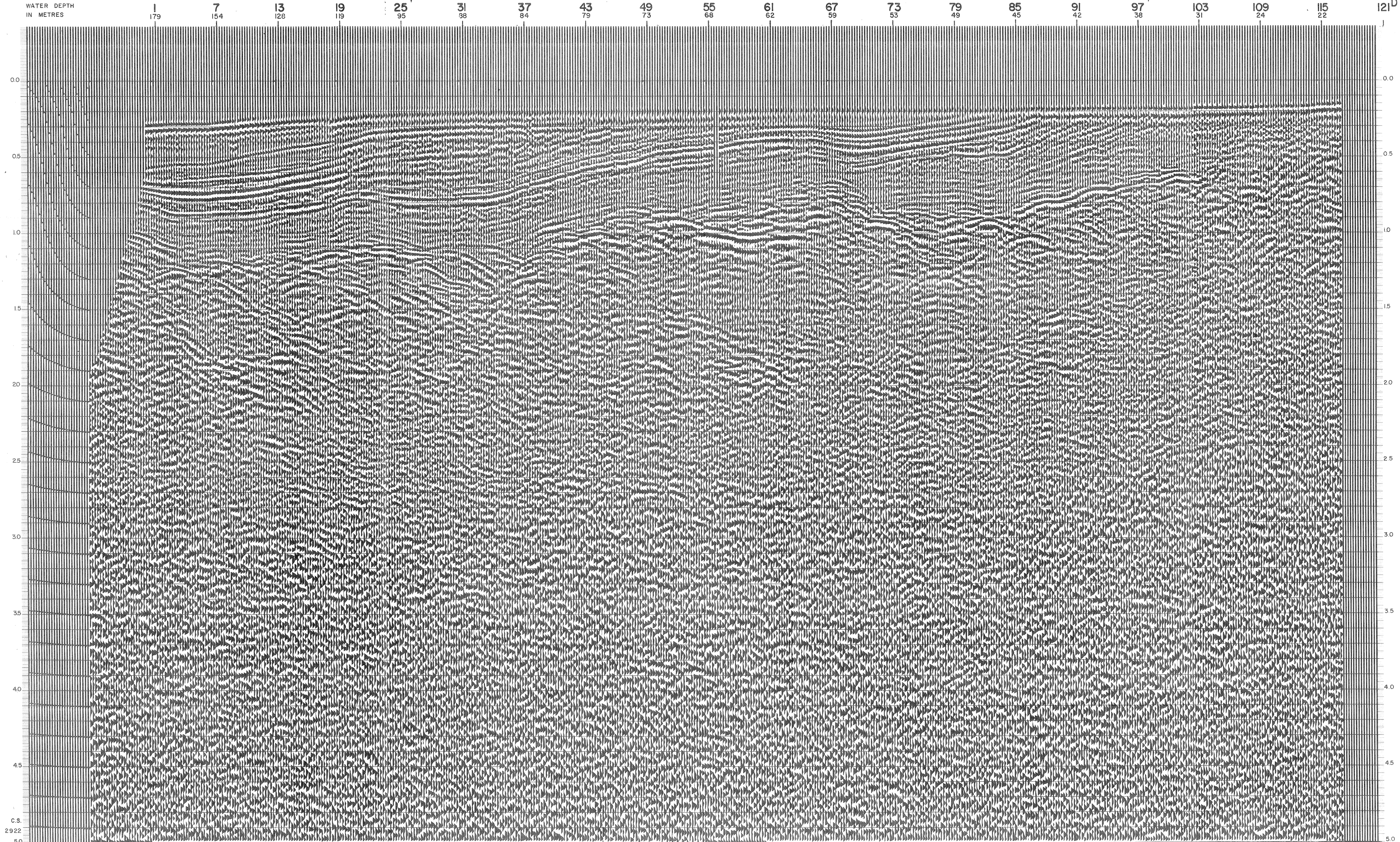
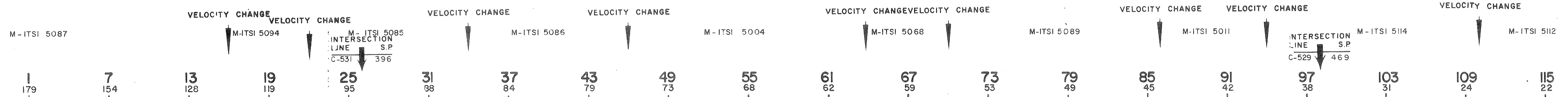
RECORDING DATA	PROCESSING INFORMATION		PROCESSING SEQUENCE
PART NO. 52 ENERGY SOURCE AQUAPULSE FILTER 0-52 HZ CABLE 1 1600H GEOPHONES 32 CRYSTAL ELEMENT "PHASED" ARRAY LEAD IN 260 FT. AMPLIFIER RECORD BINARY GAIN CHARGE SIZE 4 GUNX POP DATE SHOT JUNE 1968	DECONVOLUTION DECONVOLVED BEFORE STACK TIME VARIANT FILTER LC HC TIME ZONE Hz dB OCT Hz dB OCT 0.100-0.400 20 18 60 18 0.400-0.800 15 12 50 12 0.800-1.250 10 12 45 12 1.250-2.400 10 12 40 12 2.400-5.000 5 6 30 6		1) EDIT (SUM 3 POPS) 2) DECONVOLVED BEFORE STACK 3) NORMAL MOVE OUT 4) STACK 120% 5) TV FILTER 6) PLAYBACK (UNFILTERED)
	TIME VARIANT TIME ZONE 0-560 ms REPEATS 2		REEL NO. 71849 DATE SEPTEMBER 1968

NORTHEAST

LINE: C-536

S.P. 1 to S.P. 121<sup>D</sup>

DATUM PLANE: SEA LEVEL



C.S. 2922 50