

AGIP

AREA: SICILY

PROSPECT: ZONE 'c'

WESTERN GEOPHYSICAL  
MILAN DIGITAL CENTER

RECORDING DATA

PARTY NO. 52  
ENERGY SOURCE AQUAPULSE  
FILTER 10-80 HZ  
CABLE 1600 m  
GEOPHONES 32 CRYSTAL ELEMENT  
TAPERED ARRAY  
LEAD IN 765 FT

AMPLIFIER REGCOR BINARY GAIN  
CHARGE SIZE 4 GUNS POP  
DATE SHOT JUNE 1968

PROCESSING INFORMATION

SAMPLE RATE 1 ms

DECONVOLUTION

DECONVOLVED BEFORE STACK

AUTO CURRENT TIME VARIANT  
MAX APERTURE 0-560 ms  
TIME ZONE 0-5 sec  
ITERATIONS 2

TIME VARIANT FILTER

TIME ZONE	Hz	dB OCT	LC	HC
0.150 - 0.475	25	18	60	18
0.475 - 0.825	15	12	50	12
0.825 - 1.700	10	12	50	12
1.700 - 1.950	10	12	35	12
1.950 - 5.000	5	6	30	6

PROCESSING SEQUENCE

- 1) EDIT (SUM 3 POPS)
- 2) DECONVOLVED BEFORE STACK
- 3) NORMAL MOVE OUT
- 4) STACK (20%)
- 5) TV FILTER
- 6) PLAYBACK (UNFILTERED)

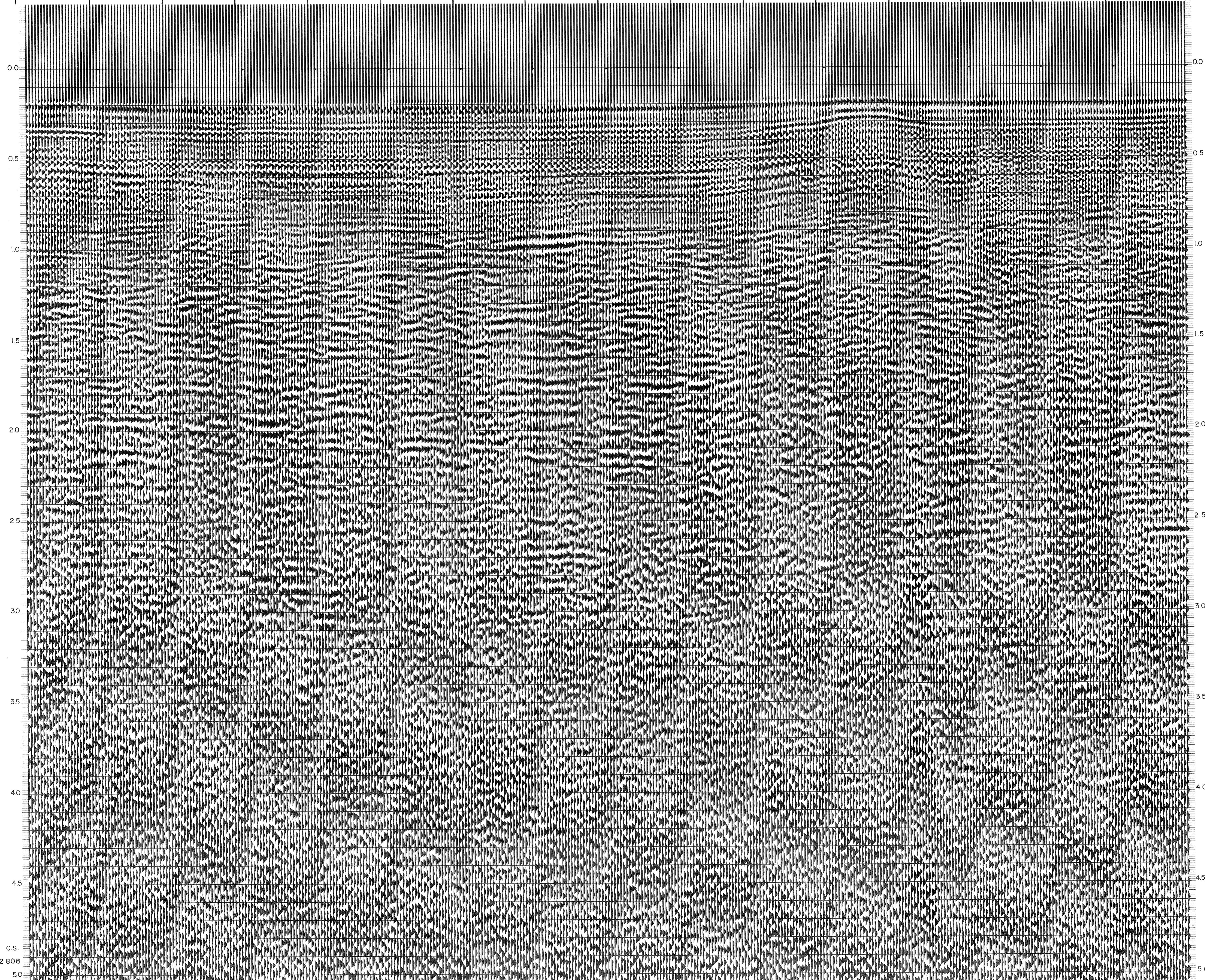
REF. NO. 73338  
DATE AUGUST 1968



M - ITSI 5033

INTERSECTION  
LINE S.P.  
C-570 28

337 106 343 110 349 110 355 110 361 110 367 110 373 110 379 110 385 110 391 106 397 102 403 91 409 91 415 95 421 91 427 91 WATER DEPTH IN METRES



C.S. 2808 50