

AREA: SICILY

PROSPECT: ZONE 'C'

WESTERN  
GEOPHYSICAL  
DIVISION OF CITICORP INDUSTRIES  
MILAN DIGITAL CENTER

RECORDING DATA	
PARTY NO.	62
ENERGY SOURCE	AQUAPULSE
FILTER	10-80 HZ
CABLE	1600 m
GEOPHONES	32 CRYSTAL ELEMENT TAPERED ARRAY
LEAD IN	760 FT
AMPLIFIER RECORD	BINARY GAIN
CHARGE SIZE	4 GUNS POP
DATE SHOT	JUNE 1968

DECONVOLUTION	
DECONVOLVED BEFORE STACK	
AUTO CORR INT	TIME VARIANT
MAX APERTURE	0-560 ms
TIME ZONE	0-5 sec
ITERATIONS	2

TIME VARIANT FILTER				
NOT APPLIED				
TIME ZONE	LC	HC		
Hz	dB/OCT	Hz	dB/OCT	
0100 - 0350	20	-18	60	-18
0350 - 0800	15	-12	50	-12
0800 - 01700	10	-12	45	-12
01700 - 02500	10	-12	40	-12
02500 - 05000	5	-6	30	-6

PROCESSING SEQUENCE	
1)	EDIT (SUM 3 POPS)
2)	DECONVOLVED BEFORE STACK
3)	NORMAL MOVE OUT
4)	STACK 1200%
5)	TV FILTER
6)	PLAYBACK (UNFILTERED)
REEL NO	73818
DATE	SEPTEMBER 1968

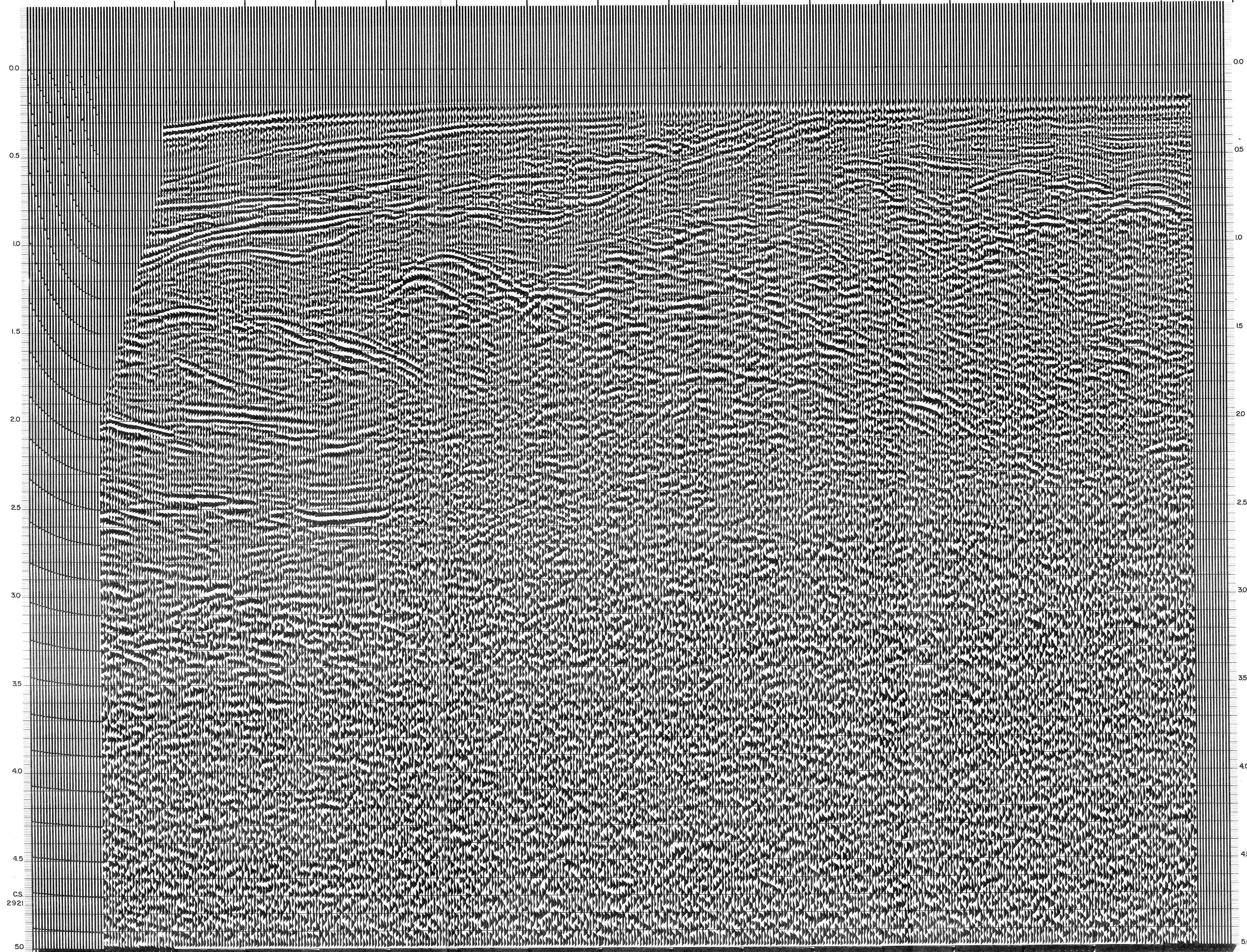
LINE: C-534

S.P. 1 to S.P. 91<sup>D</sup>

NORTHEAST

DATUM PLANE: SEA LEVEL

WATER DEPTH IN METRES	1	7	13	19	25	31	37	43	49	55	61	67	73	79	85	91 <sup>D</sup>
	201	161	132	117	97	91	80	73	66	59	51	48	42	40	33	27



INTERSECTION  
LINE S.P.  
C-529 393

CS.  
2921