

AREA: SICILY

PROSPECT: ZONE 'C'

WESTERN GEOPHYSICAL
DIVISION OF LITTON INDUSTRIES
MILAN DIGITAL CENTER

RECORDING DATA

PARTY NO 62
ENERGY SOURCE AQUAPULSE
FILTER 10-80 HZ
CABLE 1600 m
GEOPHONES 32 CRYSTAL ELEMENT
TAPERED ARRAY
LEAD IN 76.5 FT.
AMPLIFIER REDCOR BINARY GAIN
CHARGE SIZE 4 GUNS POP
DATE SHOT JUNE 1968

PROCESSING INFORMATION

SAMPLE RATE 2 ms

DECONVOLUTION

DECONVOLVED BEFORE STACK

AUTO CORR INT TIME VARIANT
MAX APERTURE 0-360 ms
TIME ZONE 0-5 sec
ITERATIONS 2

TIME VARIANT FILTER

TIME ZONE	LC		HC	
	Hz	dB OCT	Hz	dB OCT
0.150 - 0.375	20	18	60	18
0.375 - 0.825	15	12	50	12
0.825 - 1.650	10	12	50	12
1.650 - 2.250	10	12	35	12
2.250 - 5.000	5	6	30	6

PROCESSING SEQUENCE

- 1) EDIT (SUM 3 POPS)
- 2) DECONVOLVED BEFORE STACK
- 3) NORMAL MOVE OUT
- 4) STACK 1200%
- 5) TV FILTER
- 6) PLAYBACK (UNFILTERED)

REEL NO 71725
DATE AUGUST 1968

LINE: C-533

S.P. 613 to S.P. 709^D

SOUTHEAST

DATUM PLANE: SEA LEVEL

M-ITSI 5023 VELOCITY CHANGE M-ITSI 5033

VELOCITY CHANGE

M-ITSI 5011

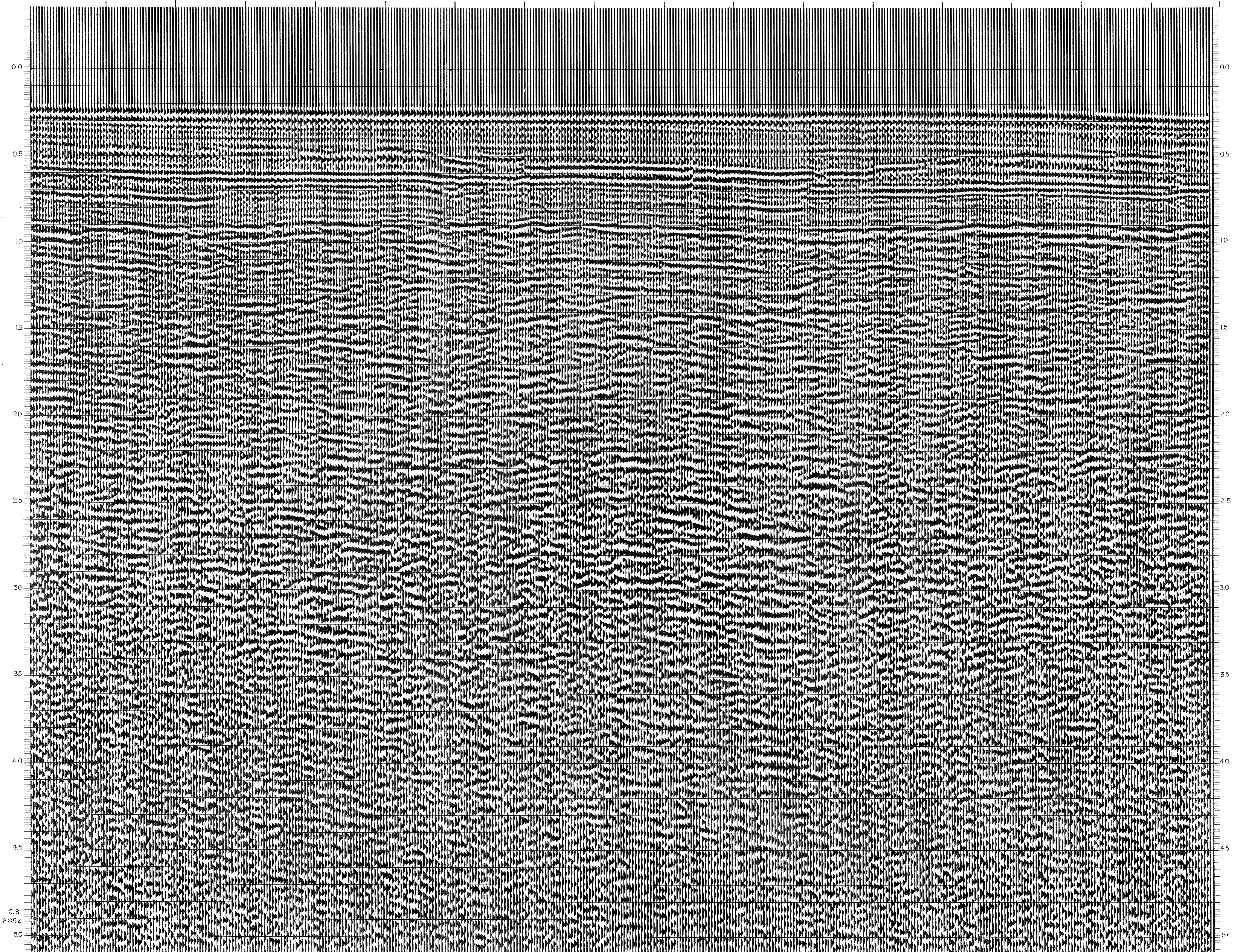
VELOCITY CHANGE

M-ITSI 5003

INTERSECTION LINE S.P. C-574 90

INTERSECTION LINE S.P. C-576 100

WATER DEPTH IN METRES 613 120 619 121 625 123 631 124 637 125 643 126 649 128 655 132 661 132 667 133 673 133 679 133 685 135 691 141 697 150 703 165 709^D



C.S. 2852