

AREA: SICILY

PROSPECT: ZONE 'C'



MILAN DIGITAL CENTER

RECORDING DATA	PROCESSING INFORMATION		PROCESSING SEQUENCE
PARTY NO. 62	SAMPLE RATE 2 ms		1) EDIT (SUM 3 POPS)
ENERGY SOURCE AQUAPULSE	DECONVOLUTION	TIME VARIANT FILTER	2) DECONVOLVED BEFORE STACK
FILTER 10-80 HZ	DECONVOLVED BEFORE STACK	LC HC	3) NORMAL MOVE OUT
CABLE 1600 m		TIME ZONE Hz dB OCT Hz dB OCT	4) STACK 1200%
GEOPHONES 32 CRYSTAL ELEMENT TAPERED ARRAY			5) TVFILTER
LEAD IN 765 FT			6) PLAYBACK (UNFILTERED)
AMPLIFIER REDCOR BINARY GAIN	AUTO CORR INT TIME VARIANT	0.50 - 0.375 20 18 60 18	
CHARGE SIZE 4 GUNS POP	MAX APERTURE 0-360 ms	0.375 - 0.825 15 12 50 12	
DATE SHOT JUNE 1968	TIME ZONE 0-5.3%	0.825 - 1.650 10 12 50 12	
	ITERATIONS 2	1.650 - 2.250 10 12 35 12	
		2.250 - 5.000 5 6 30 6	
			REEL NO 73 263
			DATE AUGUST 1968

LINE: C-533

SOUTHEAST

S.P. 307 to S.P. 403

DATUM PLANE SEA LEVEL

M-ITSI 5011

M-ITSI 5023

M-ITSI 5033

M-ITSI 5002

VELOCITY CHANGE

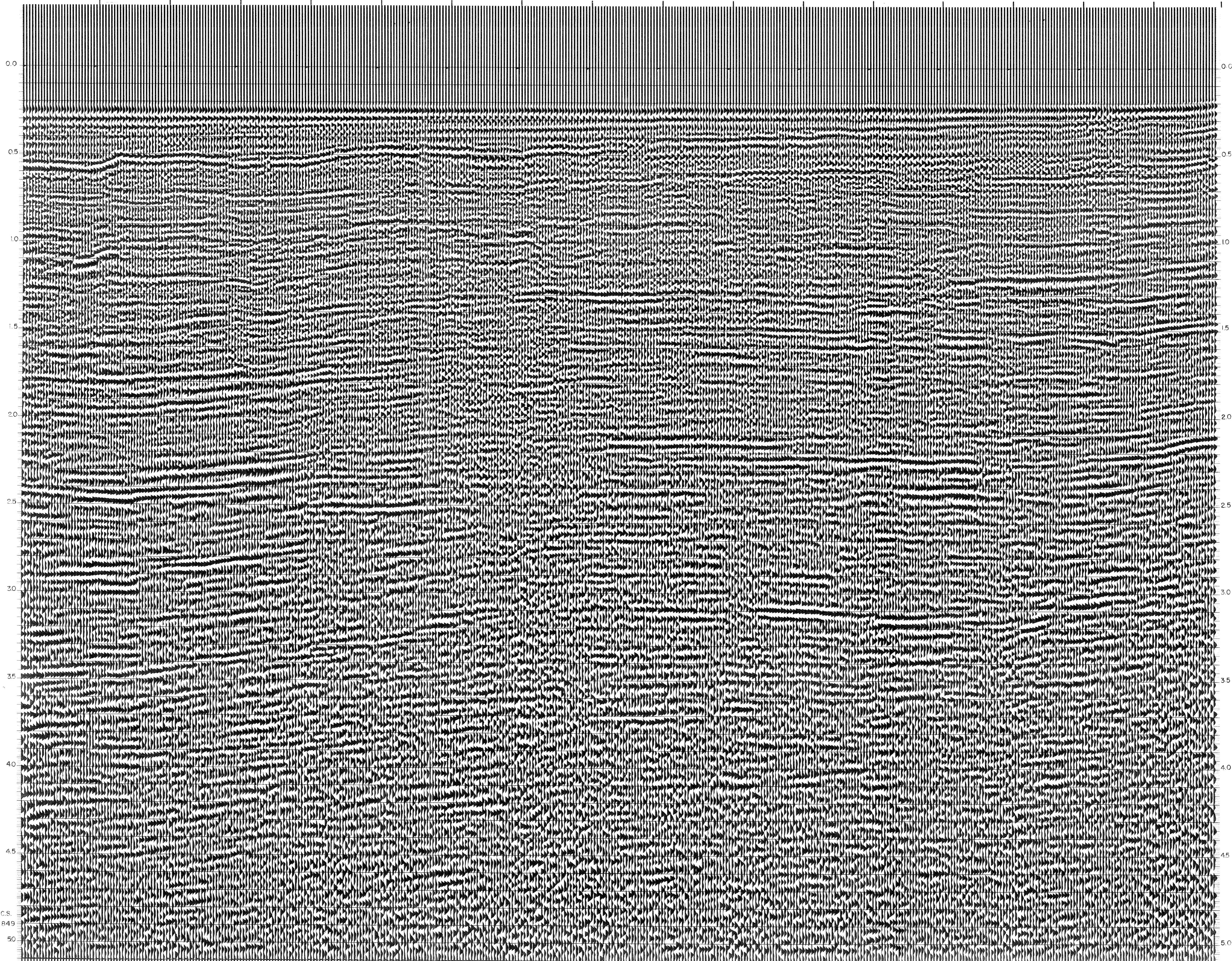
INTERSECTION
LINE S.P.
C-566 102

VELOCITY CHANGE

VELOCITY CHANGE

INTERSECTION
LINE S.P.
C-568 101

WATER DEPTH IN METRES 307 131 313 128 319 128 325 128 331 128 337 128 343 128 349 126 355 126 361 124 367 123 373 123 379 119 385 121 391 121 397 117 403 106



C.S.

2 849

50