



THE AQUAPULSE SYSTEM

LINE: C-532EXT.

S.P. 43D to S.P. 25D

DATUM PLANE : SEA LEVEL



AREA : PANTELLERIA

PROSPECT : ZONE "C"

WESTERN
GEOPHYSICAL
DIVISION OF LITTON INDUSTRIES
MILAN DIGITAL CENTER

RECORDING DATA

PARTY NO. 62
ENERGY SOURCE AQUAPULSE
FILTER 10-80 HZ
CABLE 1600 m.
GEOPHONES 32 CRYSTAL ELEMENT
TAPERED ARRAY
LEAD IN 760'
AMPLIFIER REDCOR BINARY GAIN
CHARGE SIZE 4 GUNS POP
DATE SHOT MARCH 1969

PROCESSING INFORMATION

SAMPLE RATE 4ms

DECONVOLUTION

DECONVOLVED BEFORE STACK

AUTO CORR. INT. TIME VARIANT
MAX. APERTURE 0.400 m.
TIME ZONE 0-5 sec.
ITERATIONS 2

TIME VARIANT FILTER

TIME ZONE Hz DB OCT Hz DB OCT

TIME ZONE	Hz	DB	OCT	Hz	DB	OCT
0125-0300	20	6	60	6	6	6
0300-0800	10	6	60	6	6	6
0800-1200	10	6	50	6	6	6
1200-1600	10	6	35	6	6	6
1600-5000	5	6	30	6	6	6

PROCESSING SEQUENCE

- EDIT - (SUM 4 POPS)
- DECONVOLVED BEFORE STACK
- NORMAL MOVE OUT
- 1200 % STACK
- TV FILTER
- PLAYBACK (UNFILTERED)
- VELOCITY ANALYSIS

REEL NO. 76886
DATE JUNE 1969

M-ITSI 5114
INTERSECTION
LINE S.P.
C-529 318

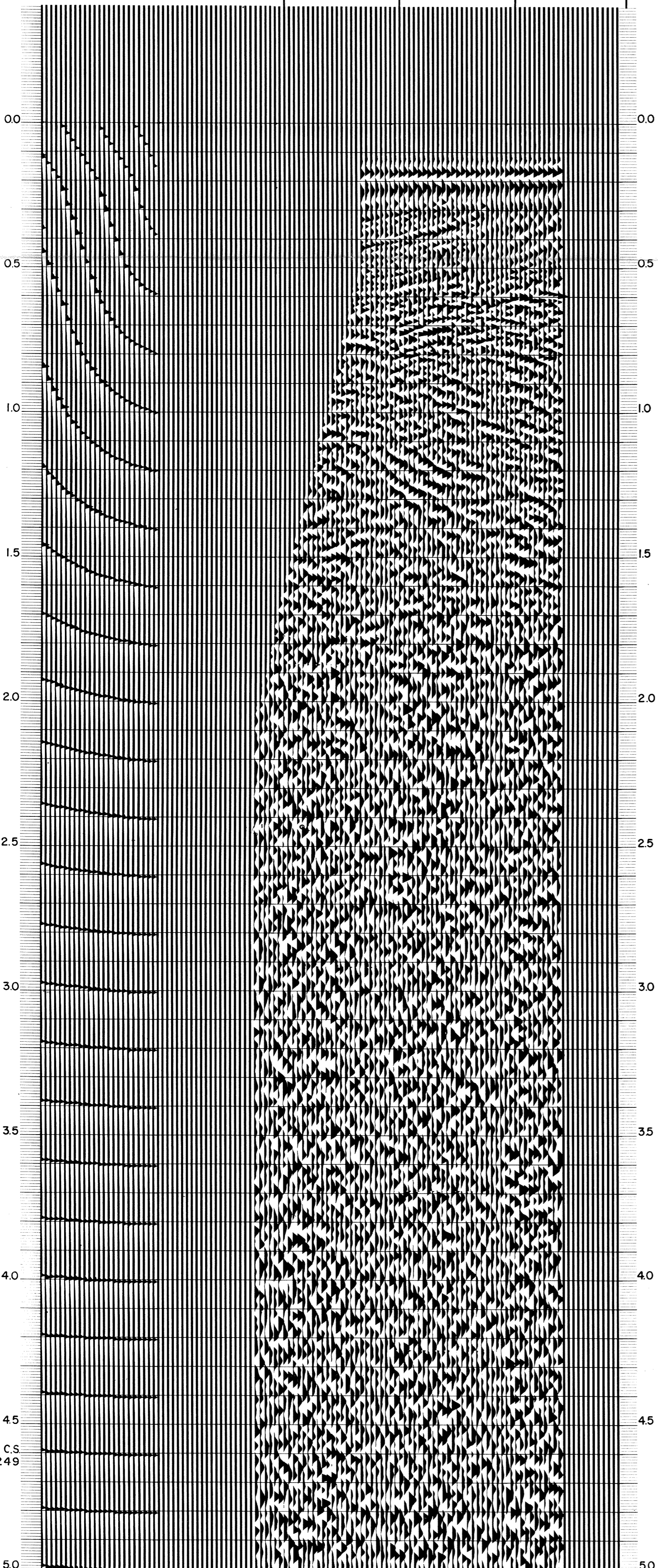
WATER DEPTH
IN METRES

43

37
42

31
35

25D



NORTHEAST

C.S.
9249