

AGIP AREA: SICILY PROSPECT: ZONE "C"		WESTERN GEOPHYSICAL DIVISION OF LITTON INDUSTRIES MILAN DIGITAL CENTER	
RECORDING DATA PARTY NO. 62 ENERGY SOURCE AQUAPULSE FILTER 10-80 HZ CABLE 1600 m. GEOPHONES 32 CRYSTAL ELEMENT TAPERED ARRAY LEAD IN 760 FT		PROCESSING INFORMATION SAMPLE RATE 2 ms. DECONVOLUTION DECONVOLVED BEFORE STACK AUTO CORR. INT. TIME VARIANT MAX. APERTURE 0-560 m. TIME ZONE 0-5 Sec. ITERATIONS 2	
TIME VARIANT FILTER L.C. H.C. TIME ZONE Hz dB OCT Hz dB OCT 0100 - 0400 20 - 18 60 - 18 0400 - 0800 15 - 12 50 - 12 0800 - 1250 10 - 12 45 - 12 1250 - 2400 10 - 12 40 - 12 2400 - 5000 5 - 6 30 - 6		PROCESSING SEQUENCE 1) EDIT - (SUM 4 POPS) 2) DECONVOLVED BEFORE STACK 3) NORMAL MOVE OUT 4) 1200 % STACK 5) TIME VARIANT FILTER 6) PLAYBACK (UNFILTERED)	
AMPLIFIER REDCOR BINARY GAIN CHARGE SIZE 4 GUNS POP DATE SHOT JUNE 1968		REEL NO. 73807 DATE SEPTEMBER 1968	

LINE: C-532

S.P. 1 to S.P. 91^D

NORTHEAST

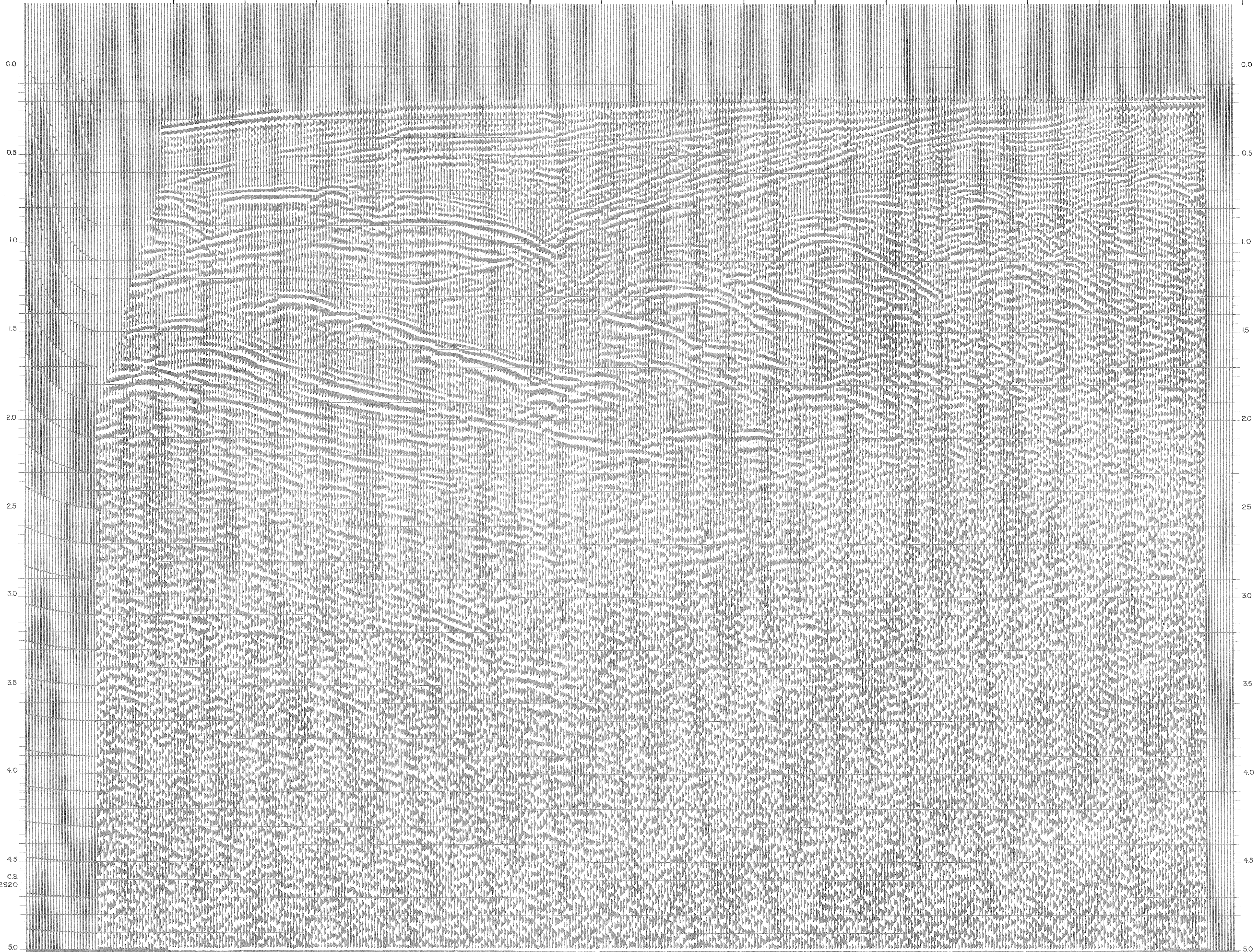
INTERSECTION LINE S.P. C-531 252

VELOCITY CHANGE VELOCITY CHANGE VELOCITY CHANGE VELOCITY CHANGE VELOCITY CHANGE VELOCITY CHANGE VELOCITY CHANGE VELOCITY CHANGE

M-ITSI 5040 M-ITSI 5039 M-ITSI 5124 M-ITSI 5024 M-ITSI 5124 M-ITSI 5091 M-ITSI 5085 M-ITSI 5064 M-ITSI 5119 M-ITSI 5126

WATER DEPTH IN METRES 1 7 13 19 25 31 37 43 49 55 61 67 73 79 85 91^D

212 170 139 115 95 86 77 69 60 55 46 44 42 39 33 33



C.S. 2920