

THE AQUAPULSE SYSTEM



AREA : SICILY

PROSPECT : ZONE "C"

WESTERN GEOPHYSICAL
S. S. DE LUCA
MILAN DIGITAL CENTER

RECORDING DATA

PARTY NO. 62
ENERGY SOURCE AQUAPULSE
FILTER 10-80 HZ
CABLE 1600 m.
GEOPHONES 32 CRYSTAL ELEMENT
TAPERED ARRAY
LEAD IN 765 FT.
AMPLIFIER REDCOR BINARY GAIN
CHARGE SIZE 4 GUNS POP
DATE SHOT JUNE 1968

PROCESSING INFORMATION

SAMPLE RATE 2 ms

DECONVOLUTION

DECONVOLVED BEFORE STACK

TIME VARIANT FILTER

L.C. H.C.
TIME ZONE Hz dB OCT Hz dB OCT
0.100 - 0.525 20 - 18 60 - 18
0.525 - 0.525 15 - 12 50 - 12
0.625 - 1.750 10 - 12 50 - 12
1.750 - 2.450 10 - 12 35 - 12
2.450 - 8.000 5 - 6 30 - 6

PROCESSING SEQUENCE

- 1) EDIT - (SUM 4 POPS)
- 2) DECONVOLVED BEFORE STACK
- 3) NORMAL MOVE OUT
- 4) 1200 % STACK
- 5) TIME VARIANT FILTER
- 6) PLAYBACK (UNFILTERED)

REEL NO. 7325
DATE SEPTEMBER 1968

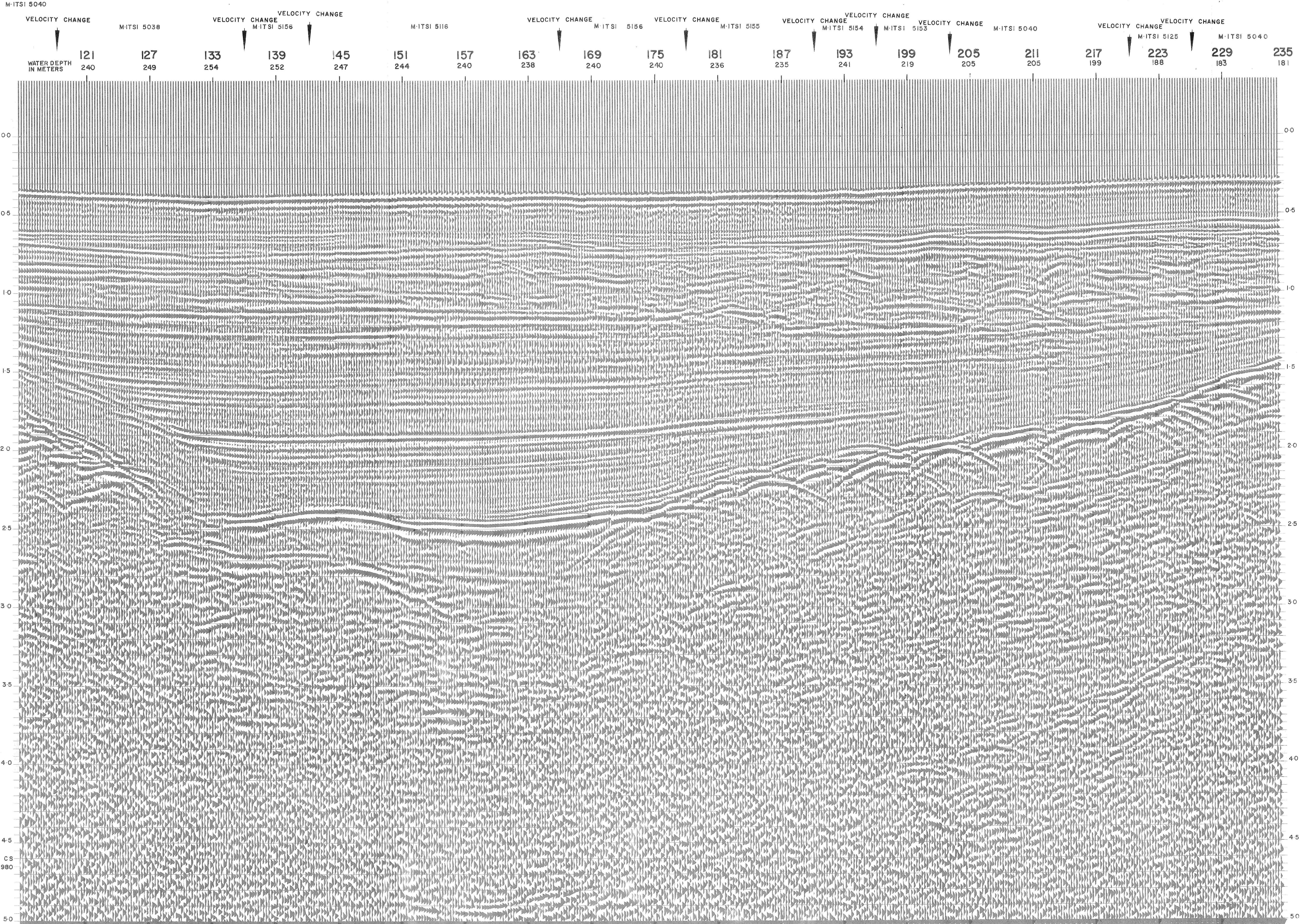
LINE : C-531

S.P. 121 to S.P. 235

SOUTH EAST

DATUM PLANE : SEA LEVEL

INTERSECTION
LINE S.P.
C-531 18



M-ITSI 5040

VELOCITY CHANGE

M-ITSI 5038

VELOCITY CHANGE
M-ITSI 5156

M-ITSI 5116

VELOCITY CHANGE

M-ITSI 5156

VELOCITY CHANGE

M-ITSI 5155

VELOCITY CHANGE

M-ITSI 5154

VELOCITY CHANGE

M-ITSI 5153

M-ITSI 5040

VELOCITY CHANGE

M-ITSI 5125

VELOCITY CHANGE

M-ITSI 5040

WATER DEPTH

121

127

133

139

145

151

157

163

169

175

181

187

193

199

205

211

217

223

229

235

CS

2980

50

50