

THE AQUAPULSE SYSTEM



AREA : PANTELLERIA

PROSPECT : ZONE "C"

WESTERN  
GEOPHYSICAL  
DIVISION OF LITTON INDUSTRIES  
MILAN DIGITAL CENTER

RECORDING DATA

PARTY NO. 62  
ENERGY SOURCE AQUAPULSE  
FILTER 10-80 HZ  
CABLE 1600 m.  
GEOPHONES 32 CRYSTAL ELEMENT  
TAPERED ARRAY  
LEAD IN 760'  
AMPLIFIER REDCOR BINARY GAIN  
CHARGE SIZE 4 GUNS POP  
DATE SHOT MARCH 1969

PROCESSING INFORMATION

SAMPLE RATE

DECONVOLUTION  
DECONVOLVED BEFORE STACK

TIME VARIANT FILTER  
L.C. H.C.  
TIME ZONE Hz dB OCT Hz dB OCT

AUTO CORR. INT. TIME VARIANT  
MAX. APERTURE 0-400 ms.  
TIME ZONE 0-5 Sec.  
ITERATIONS 2

125	300	20	6	60	6
300	850	10	6	60	6
850	1400	10	6	50	6
1400	1900	10	6	35	6
1900	5000	5	6	30	6

PROCESSING SEQUENCE

- 1) EDIT - (SUM 4 POPS)
  - 2) DECONVOLVED BEFORE STACK
  - 3) NORMAL MOVE OUT
  - 4) 1200 % STACK
  - 5) TV FILTER
  - 6) PLAYBACK (UNFILTERED)
- V = VELOCITY ANALYSIS

REEL NO. 77128  
DATE JUNE 1969

LINE: C-529 Ext

S.P. 7<sup>D</sup> to S.P. 55<sup>D</sup>

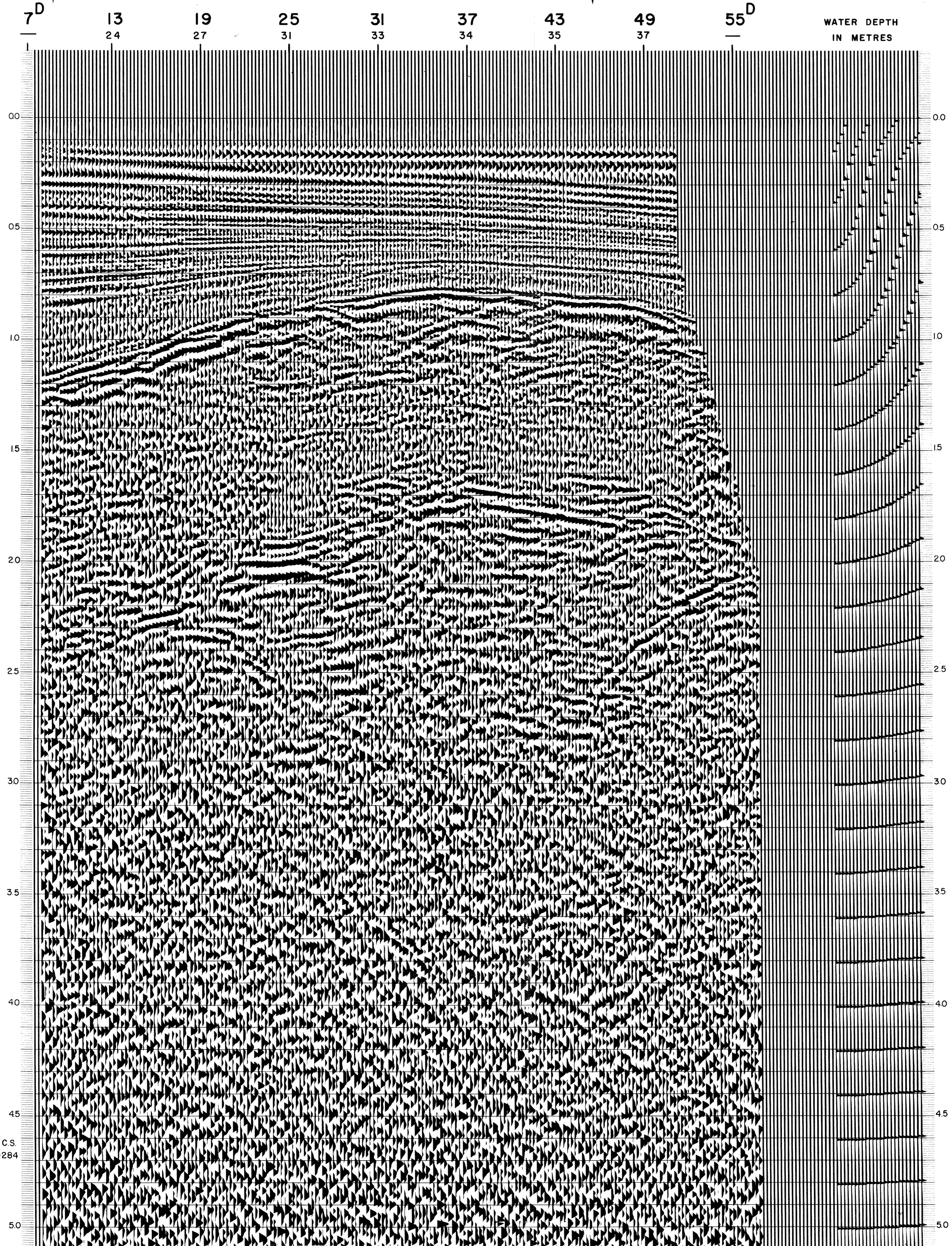
DATUM PLANE : SEA LEVEL

INTERSECTION  
LINE S.P.  
C-1010Ext 3

M-ITS1 5135

INTERSECTION  
LINE S.P.  
C-612 31

SOUTHWEST



C.S.  
9284