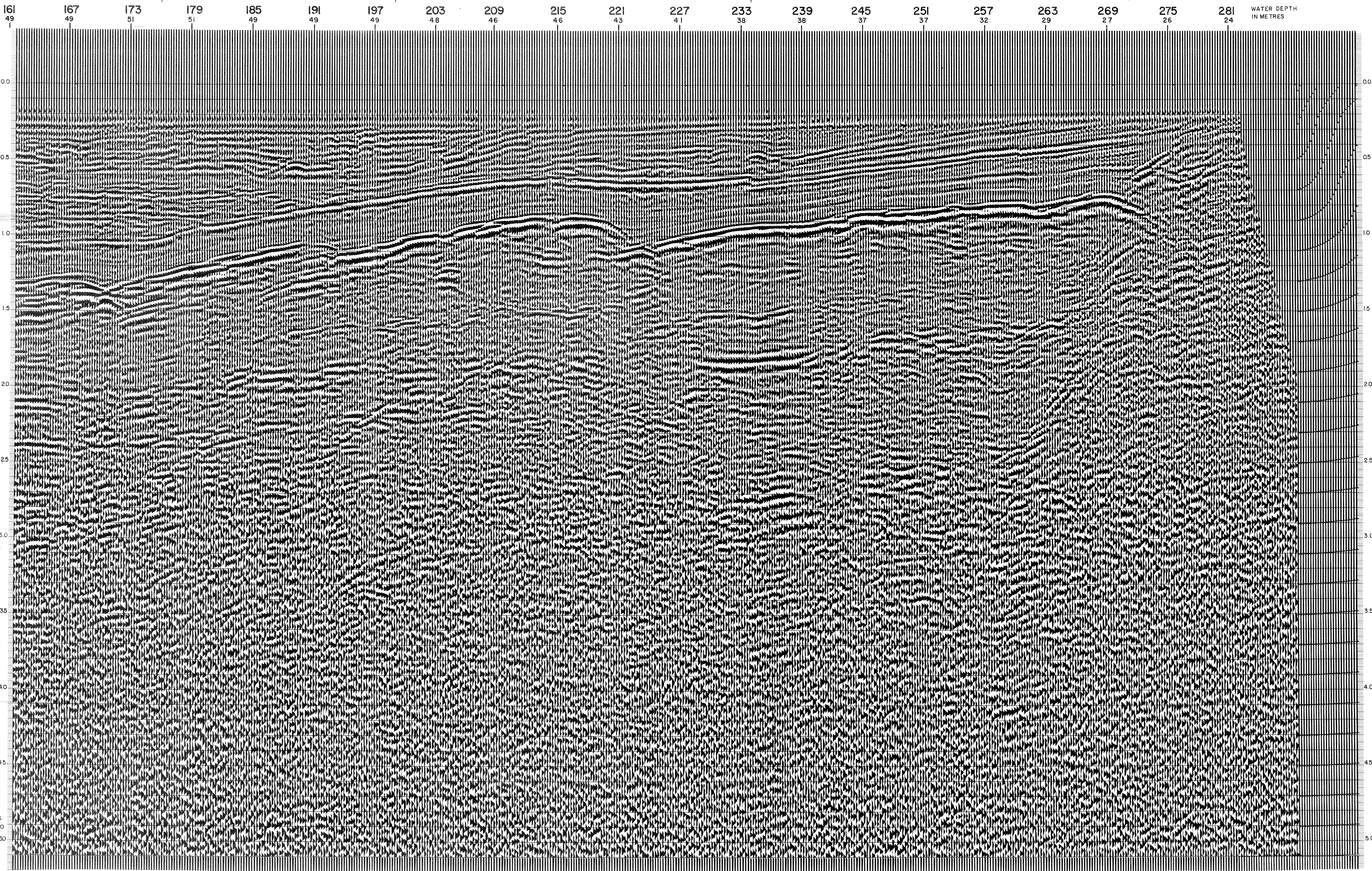


LINE: C-527

S.P. 161 to S.P. 281

DATUM PLANE: SEA LEVEL

M-ITSI 5035 VELOCITY CHANGE M-ITSI 5041 VELOCITY CHANGE M-ITSI 5015 VELOCITY CHANGE M-ITSI 5004 VELOCITY CHANGE M-ITSI 5061 VELOCITY CHANGE M-ITSI 5032 VELOCITY CHANGE M-ITSI 5033 VELOCITY CHANGE M-ITSI 5034



AGIP RECORDING DATA PARTY NO. 62 ENERGY SOURCE AQUAPULSE FILTER 10-80 HZ CABLE 1600 m GEOPHONES 32 CRYSTAL ELEMENT TAPERED ARRAY LEAD IN 7.65 FT AMPLIFIER REDCOR BINARY GAIN CHARGE SIZE 4 GUNS POP GATE SHOT JUNE 1968	PROCESSING INFORMATION SAMPLE RATE 2 ms DECONVOLUTION DECONVOLVED BEFORE STACK AUTO CORR INT TIME VARIANT MAX APERTURE 0-360 ms TIME ZONE 0-5 sec ITERATIONS 2		WESTERN GEOPHYSICAL DIVISION OF LITTON INDUSTRIES MILAN DIGITAL CENTER PROCESSING SEQUENCE 1) EDIT (SUM 3 POPS) 2) DECONVOLVED BEFORE STACK 3) NORMAL MOVE OUT 4) STACK 1200% 5) TV FILTER 6) PLAYBACK (UNFILTERED) REEL NO. 70 956 DATE AUGUST 1968	
	TIME VARIANT FILTER TIME ZONE LC HC Hz dB OCT Hz dB OCT 0.50 - 0.325 20 18 60 18 0.325 - 1.025 15 12 50 12 1.025 - 2.500 10 12 50 12 2.500 - 2.850 10 12 35 12 2.850 - 5.000 5 6 30 6			



C.S. 2830