

AREA: SICILY

PROSPECT: ZONE 'C'



MILAN DIGITAL CENTER

RECORDING DATA	
PARTY NO.	62
ENERGY SOURCE	AQUAPULSE
FILTER	10-80 HZ
CABLE	1600 m
GEOPHONES	32 CRYSTAL ELEMENT TAPERED ARRAY
LEAD IN	765 FT.
AMPLIFIER REDCOR	BINARY GAIN
CHARGE SIZE	4 GUNS POP
DATE SHOT	JUNE 1968

PROCESSING INFORMATION	
SAMPLE RATE 2 ms	
DECONVOLUTION	
DECONVOLVED BEFORE STACK	
AUTO CORR INT	TIME VARIANT
MAX APERTURE	0-360 ms
TIME ZONE	0-5.360
ITERATIONS	2
TIME VARIANT FILTER	
TIME ZONE	LC HC
0.150-0.325	20 18 60 18
0.325-1.025	15 12 50 12
1.025-2.500	10 12 50 12
2.500-2.850	10 12 35 12
2.850-5.000	5 6 30 6

PROCESSING SEQUENCE	
1) EDIT (SUM 3 POPS)	
2) DECONVOLVED BEFORE STACK	
3) NORMAL MOVE OUT	
4) STACK 1200%	
5) TV FILTER	
6) PLAYBACK (UNFILTERED)	
REEL NO.	7.0956
DATE	AUGUST 1968

LINE: C-527

S.P. 29<sup>D</sup> to S.P. 155

DATUM PLANE: SEA LEVEL

M-ITSI 5036

INTERSECTION LINE S.P. C-548 140

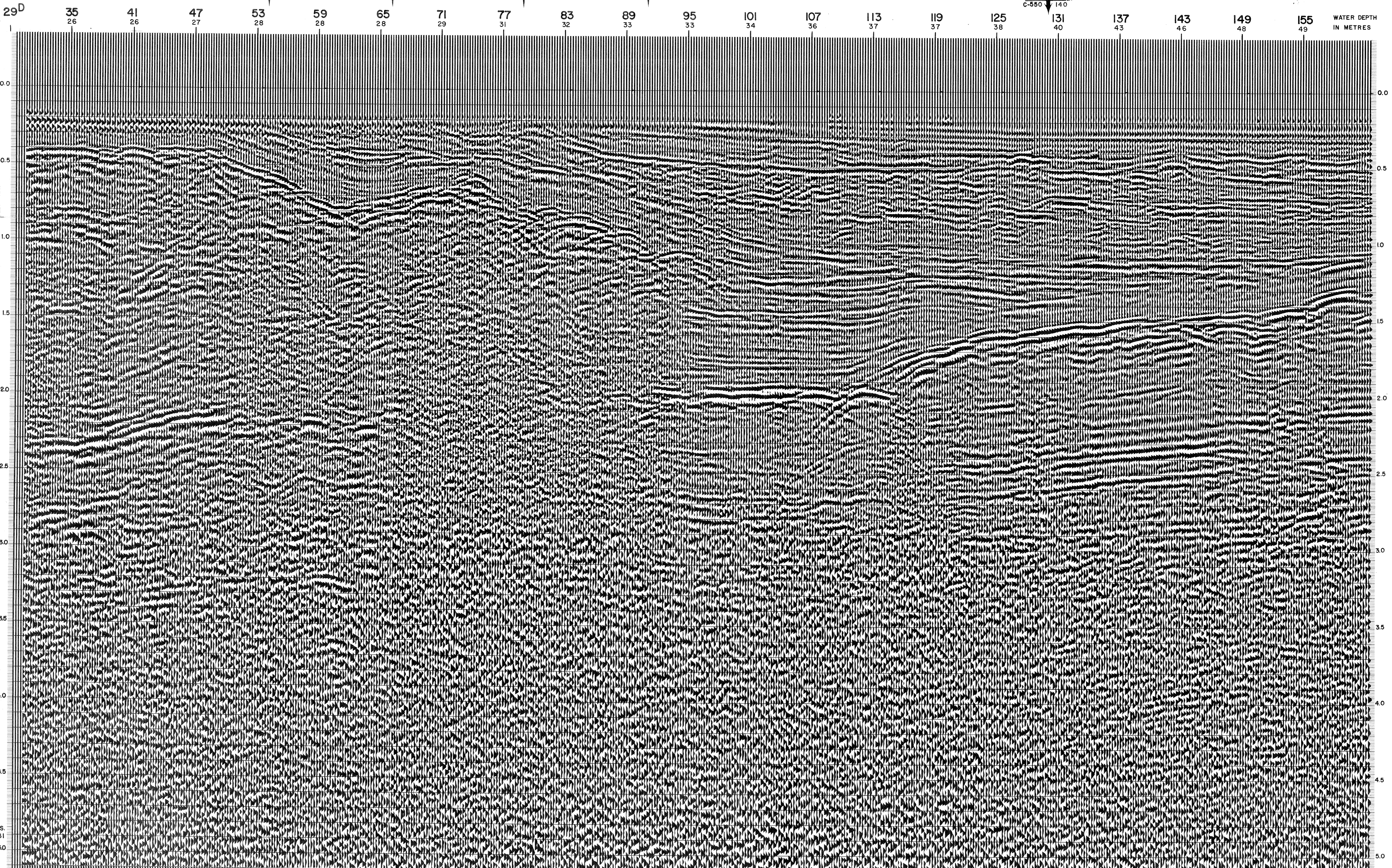
VELOCITY CHANGE M-ITSI 5044

VELOCITY CHANGE M-ITSI 5061

VELOCITY CHANGE M-ITSI 5060

VELOCITY CHANGE

M-ITSI 5035 INTERSECTION LINE S.P. C-550 140



C.S. 2831 50