



THE AQUADISE SYSTEM

PGIP

AREA : LAMPEDUSA ZONE 'C'

WESTERN
GEOPHYSICAL

PROCESSING SEQUENCE

RECORDING DATA

PART NO P2
 ENERGY SOURCE 2500 PSI
 FILTER 10 FT WZ
 CABLE 1500 M
 GEOPHONES 37 CRYSTAL ELEMENT
 TAPERED ARRAY
 LEAD IN 800 FT
 AMPLIFIER RECORDER B.N.20N GAIN
 CHANNEL SIZE 4 QUANT POP
 DATE SMOI MAY 1968

PROCESSING INFORMATION

START DATE 7 MS
 DECONVOLVED BEFORE STACK
 TIME VARIANT FILTER
 L.C. H.C.
 TIME ZONE 0 200-1 565 SEC 15 15 50 12
 0 565-1 600 15 12 50 12
 1 000-1 800 10 6 40 9
 1 800-3 000 10 6 35 9
 3 000-5 000 10 6 35 9
 ITERATIONS 4

1) EDIT - SUM - 3 POPS.
 2) DECONVOLVED BEFORE STACK
 3) NORMAL MOVE OUT
 4) STACK 1200%
 5) T V FILTER
 6) PLAYBACK (UNFILTERED)

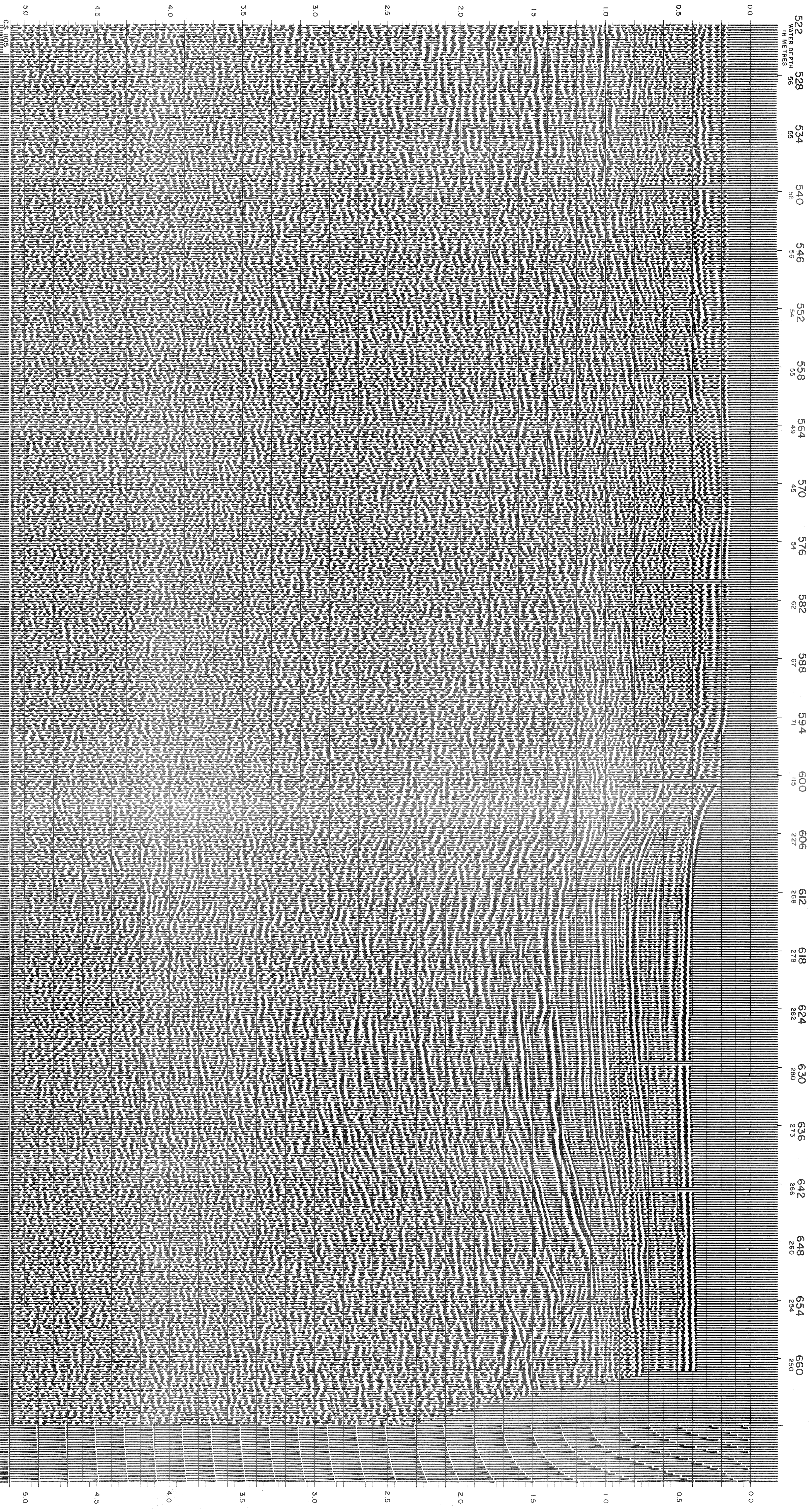
REEL NO E-0219
 DATE JUNE 1968
 W.G.C. CONTRACT TOP 185

LINE : C518

S.P. 522 T.O.S.P. 660

DATUM PLANE : SEA LEVEL

SOUTHWEST



C518