



THE AQUAPULSE SYSTEM

LINE: C-515

S.P. 480 to S.P. 600

DATUM PLANE: SEA LEVEL

SOUTHEAST

M - MESA 5020

VELOCITY CHANGE

M - MESA 5015

VELOCITY CHANGE

M - MESA 5025

WATER DEPTH
IN METRES

480

486

492

498

504

510

516

522

528

534

540

546

552

558

564

570

576

582

588

594

600

AGIP

AREA: SICILY

PROSPECT: ZONE C'

WESTERN
GEOPHYSICAL
DIVISION OF PETRO INDUSTRIES
MILAN DIGITAL CENTER

RECORDING DATA

PARTY NO. 62
ENERGY SOURCE AQUAPULSE
FILTER 10-80 HZ
CABLE 1600 m
GEOPHONES 32 CRYSTAL ELEMENT
TAPERED ARRAY
LEAD IN 789 FT
AMPLIFIER RECORD BINARY GAIN
CHARGE SIZE 4 GUNS POP
DATE SHOT MAY 1988

PROCESSING

SAMPLE RATE 2 ms

DECONVOLUTION

AUTO CORR INT TIME VARIANT
MAX APERTURE 0-5.53 ms
TIME ZONE 0-4.386
ITERATIONS 4

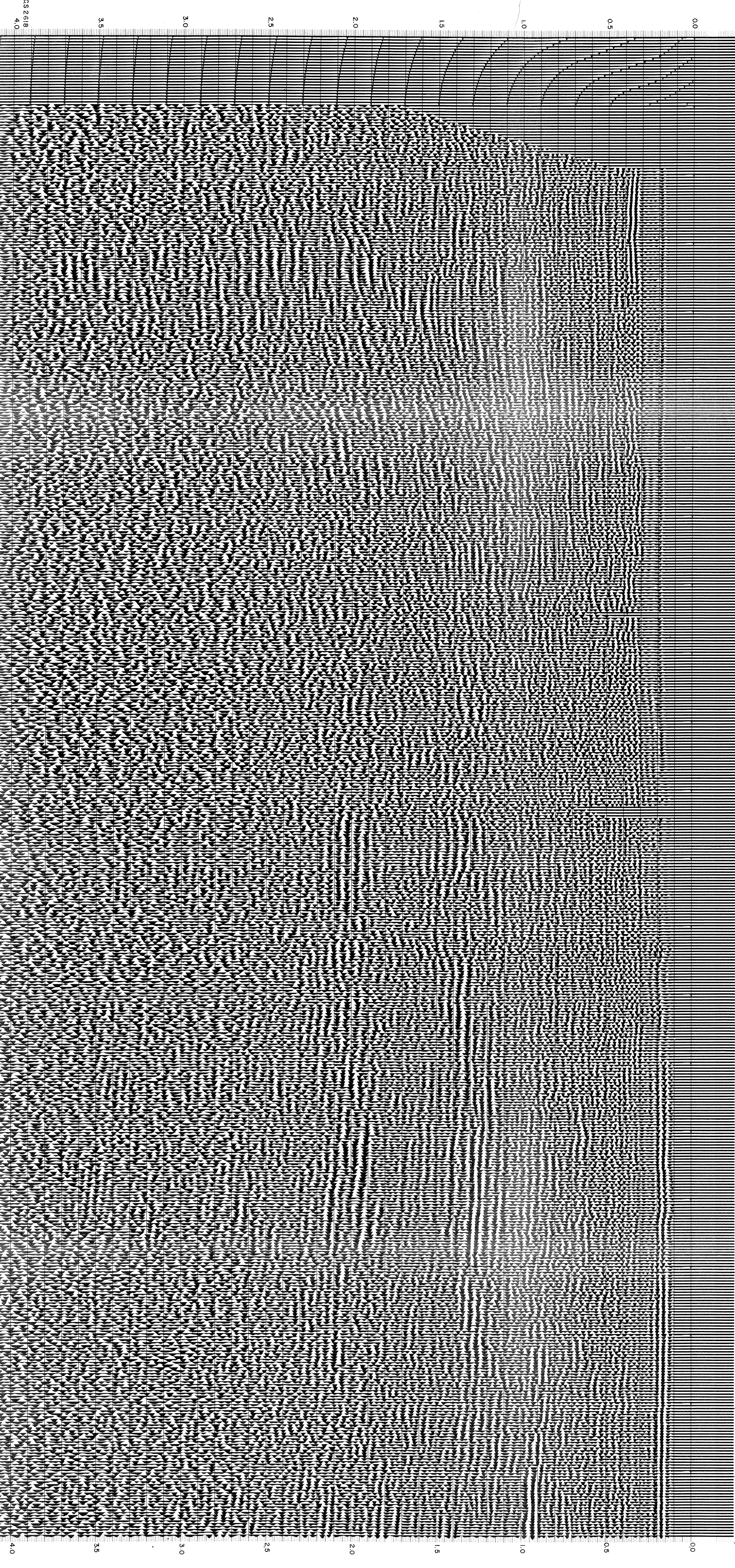
TIME VARIANT FILTER

TIME ZONE	LC Hz dB OCT	HC Hz dB OCT
0100-0475	25	18
0475-1199	20	12
1199-1800	15	6
1800-2700	10	0
2700-4000	5	-12

PROCESSING SEQUENCE

- 1) EDIT - (SUM 3 POPS)
 - 2) DECONVOLUTION BEFORE STACK
 - 3) NORMAL MOVE OUT
 - 4) STACK 1200%
 - 5) TV FILTER
 - 6) PLAYBACK (UNFILTERED)
- REEL NO 72989
DATE JULY 1988

INTERSECTION
LINE S.P.
C-518 290



CS 2518
4.0

3.5
3.0
2.5
2.0
1.5
1.0
0.5
0.0