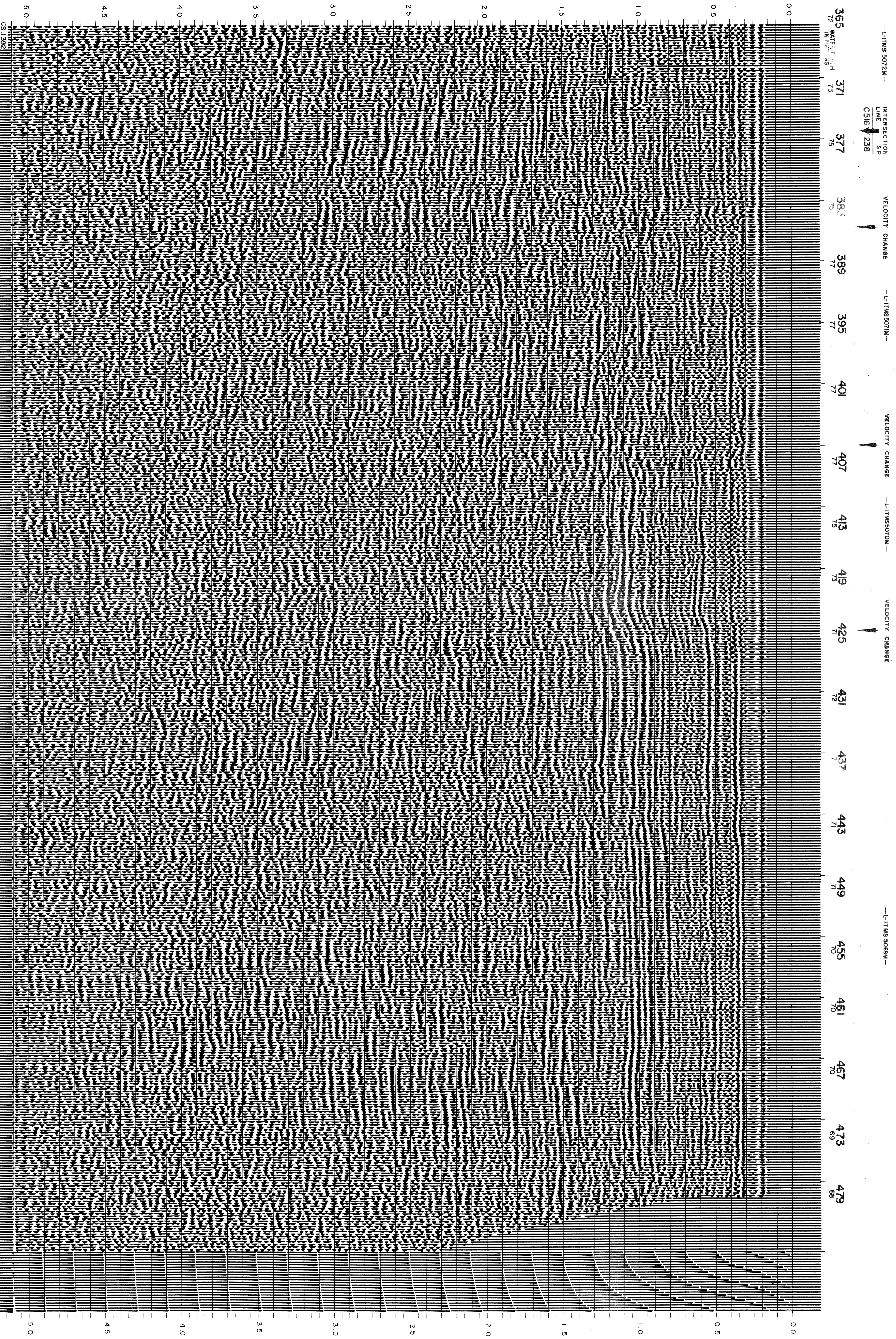




AGIP AREA LAMPEDUSA 'ZONE C' WESTERN B GEOPHYSICAL																						
RECORDING DATA PARTY NO: 82 ENERGY SOURCE: SOLAR/PO-3 FILTER: 20 PO-42 CABLE: 3000 W GEOPHONES: 32 CHANNEL ELEMENT REFLECTOR ARRAY: 1:50 IN 800 FT AMPLIFIER: RE-AMP VARY-GAIN CHANGE SITE: E. N. 509 DATE: 06/75	DECONVOLUTION DECONVOLVED BEFORE STACK AUTO CORR INT: TIME VARIANT MAX APERFURE: 0-320 MS TIME ZONE: 0.35 0.5 ITERATIONS: 1																					
PROCESSING INFORMATION SAMPLE RATE: 2 MS	TIME VARIANT FILTER <table border="1"> <thead> <tr> <th>TIME ZONE</th> <th>HZ DB OCT</th> <th>HZ DB OUT</th> </tr> </thead> <tbody> <tr><td>0 050-0 125</td><td>56</td><td>15</td></tr> <tr><td>0 125-0 150</td><td>15</td><td>12</td></tr> <tr><td>0 150-2 550</td><td>10</td><td>12</td></tr> <tr><td>0 750-2 550</td><td>10</td><td>12</td></tr> <tr><td>2 550-3 650</td><td>10</td><td>9</td></tr> <tr><td>3 650-5 000</td><td>10</td><td>6</td></tr> </tbody> </table>	TIME ZONE	HZ DB OCT	HZ DB OUT	0 050-0 125	56	15	0 125-0 150	15	12	0 150-2 550	10	12	0 750-2 550	10	12	2 550-3 650	10	9	3 650-5 000	10	6
TIME ZONE	HZ DB OCT	HZ DB OUT																				
0 050-0 125	56	15																				
0 125-0 150	15	12																				
0 150-2 550	10	12																				
0 750-2 550	10	12																				
2 550-3 650	10	9																				
3 650-5 000	10	6																				
PROCESSING SEQUENCE 1) EDIT - SIM 3 PGS 2) DECONVOLVED BEFORE STACK 3) NORMAL MOVE OUT 4) STACK 120% 5) T.V. FILTER 6) PLAYBACK (UNFILTERED)	REEL NO: E-0842 E-0854 DATE: JUNE 1978 # 6 C. CONTRACT LDP-785																					

LINE : C515
 S.P. 365 TO S.P. 479
 DATUM PLANE : SEA LEVEL
 NORTHWEST



-L-TIMS 5072M- INTERSECTION LINE S.P. CS16 238
 VELOCITY CHANGE
 -L-TIMS 5077M- VELOCITY CHANGE
 -L-TIMS 5077M- VELOCITY CHANGE
 -L-TIMS 5077M- VELOCITY CHANGE
 -L-TIMS 5069M-

0.0
 0.5
 1.0
 1.5
 2.0
 2.5
 3.0
 3.5
 4.0
 4.5
 5.0
 CS-392