



THE AQUAPULSE SYSTEM

LINE: C-506 EXT.

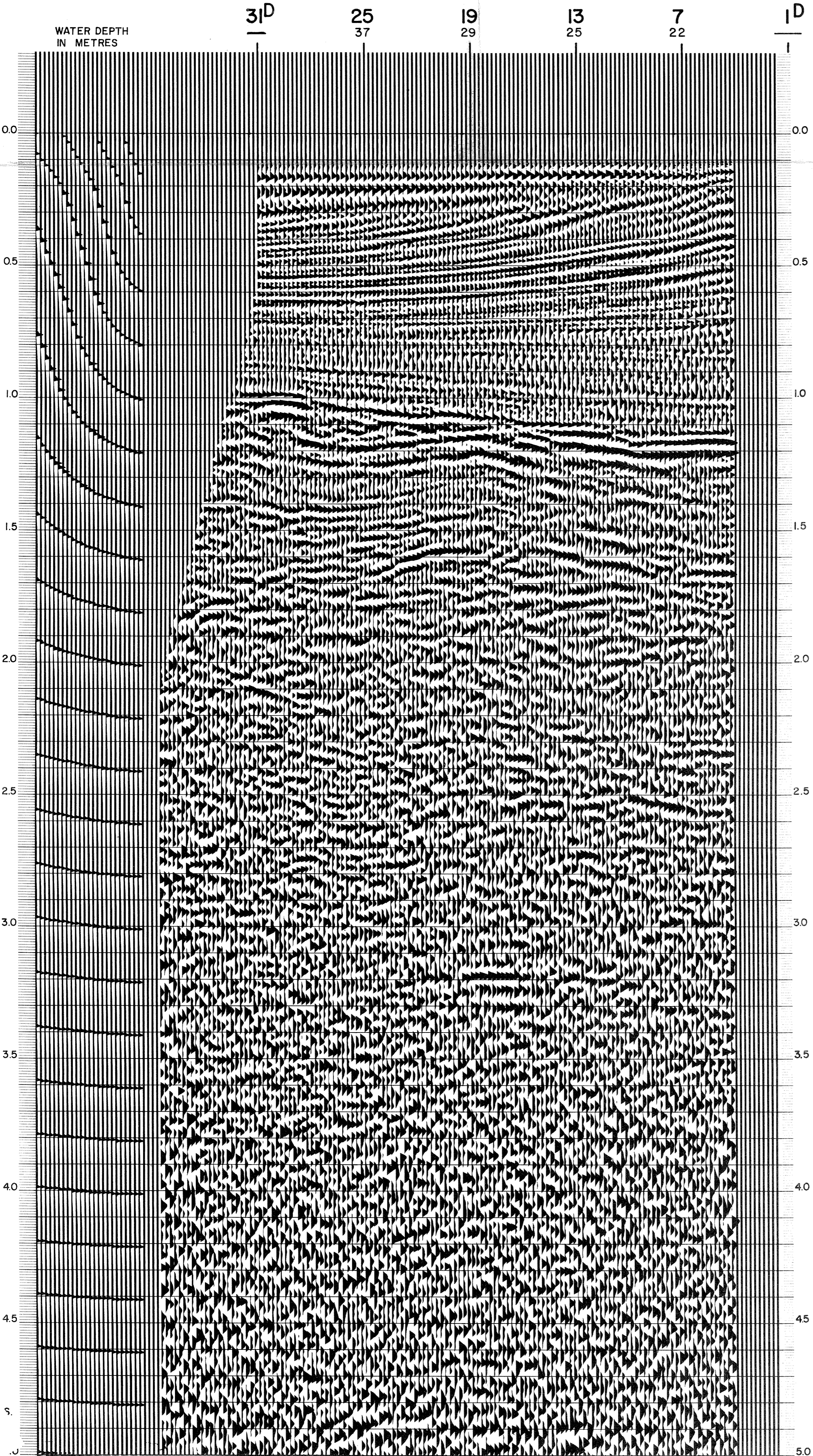
S.P. 31D to S.P. 1D

DATUM PLANE: SEA LEVEL

NORTHEAST

M - ITS1 5061

INTERSECTION
LINE S.P.
C-551A III



RGIP

AREA: PANTELLERIA

PROSPECT: ZONE "C"

WESTERN
GEOPHYSICAL
MILAN DIGITAL CENTER

RECORDING DATA

PARTY NO. 62
ENERGY SOURCE AQUAPULSE
FILTER 10-80 HZ
CABLE 1600 m.
GEOPHONES 32 CRYSTAL ELEMENT
TAPERED ARRAY
LEAD IN 760'
AMPLIFIER REDCOR BINARY GAIN
CHARGE SIZE 4 GUNS POP
DATE SHOT MARCH 1989

PROCESSING INFORMATION

SAMPLE RATE 4 ms

DECONVOLUTION

DECONVOLVED BEFORE STACK
AUTO CORR. INT. TIME VARIANT
MAX. APERTURE 0-400 m.
TIME ZONE 0-5 Sec.
ITERATIONS 2

TIME VARIANT FILTER

TIME ZONE	Hz	dB	OCT	Hz	dB	OCT
0.100-0.250	2.0	5	60	5	6	6
0.250-0.800	1.0	6	50	6	6	6
0.800-1.400	1.0	6	35	6	6	6
1.400-1.800	1.0	6	30	6	6	6
1.800-5.000	5	6	30	6	6	6

PROCESSING SEQUENCE

1) EDIT - (SUM 4 POPS)
2) DECONVOLVED BEFORE STACK
3) NORMAL MOVE OUT
4) 1200 % STACK
5) TV. FILTER
6) PLAYBACK (UNFILTERED)
7) VELOCITY ANALYSIS

REEL NO. 76934
DATE JUNE 1989