

THE AQUAPULSE SYSTEM

LINE: C-1042

S.P. 405 to S.P. 549

DATUM PLANE: SEA LEVEL

AGIP

AREA: LAMPEDUSA

PROSPECT: ZONE "C"

WESTERN
GEOPHYSICAL
MILAN DIGITAL CENTER

RECORDING DATA		PROCESSING INFORMATION		PROCESSING SEQUENCE	
PARTY NO. _____	AGIP	SAMPLE RATE 4 m.		1) EDIT - (SUM 3 POPS)	
ENERGY SOURCE _____	AQUAPULSE	TIME VARIANT FILTER		2) DECONVOLVED BEFORE STACK	
CABLE _____	10-80 HZ	TIME ZONE	HZ DB OCT	HZ DB OCT	3) NORMAL MOVE OUT
DEPTH _____	1600 m.	0.000-0.500	13	18	4) 120 % STACK
GEOPHONES 32 CRYSTAL ELEMENT		0.500-1.000	12	15	5) TIME VARIANT FILTER
TAPERED ARRAY		1.000-1.500	10	12	6) FLAVBACK (UNFILTERED)
LEAD IN _____	750'	1.500-2.000	5	30	7) VELOCITY ANALYSIS
AMPLIFIER RECORD BINARY GAIN _____					
CHARGE SIZE _____	4 GUNS POP				
DATE SHOT _____	AUGUST 1983				
DECONVOLVED BEFORE STACK		TIME VARIANT FILTER		REEL NO. _____	
AUTO CORR. INT. _____	TIME VARIANT	L.C.	H.C.	73 860	
MAX. APERTURE _____	0.500 m	0.000-0.500	13	18	DATE _____
TIME ZONE _____	0.500	0.500-1.000	12	15	JANUARY 1983
ITERATIONS _____	2	1.000-1.500	10	12	
		1.500-2.000	5	30	

M - ITSI 5205

VELOCITY CHANGE

M - ITSI 5206

VELOCITY CHANGE

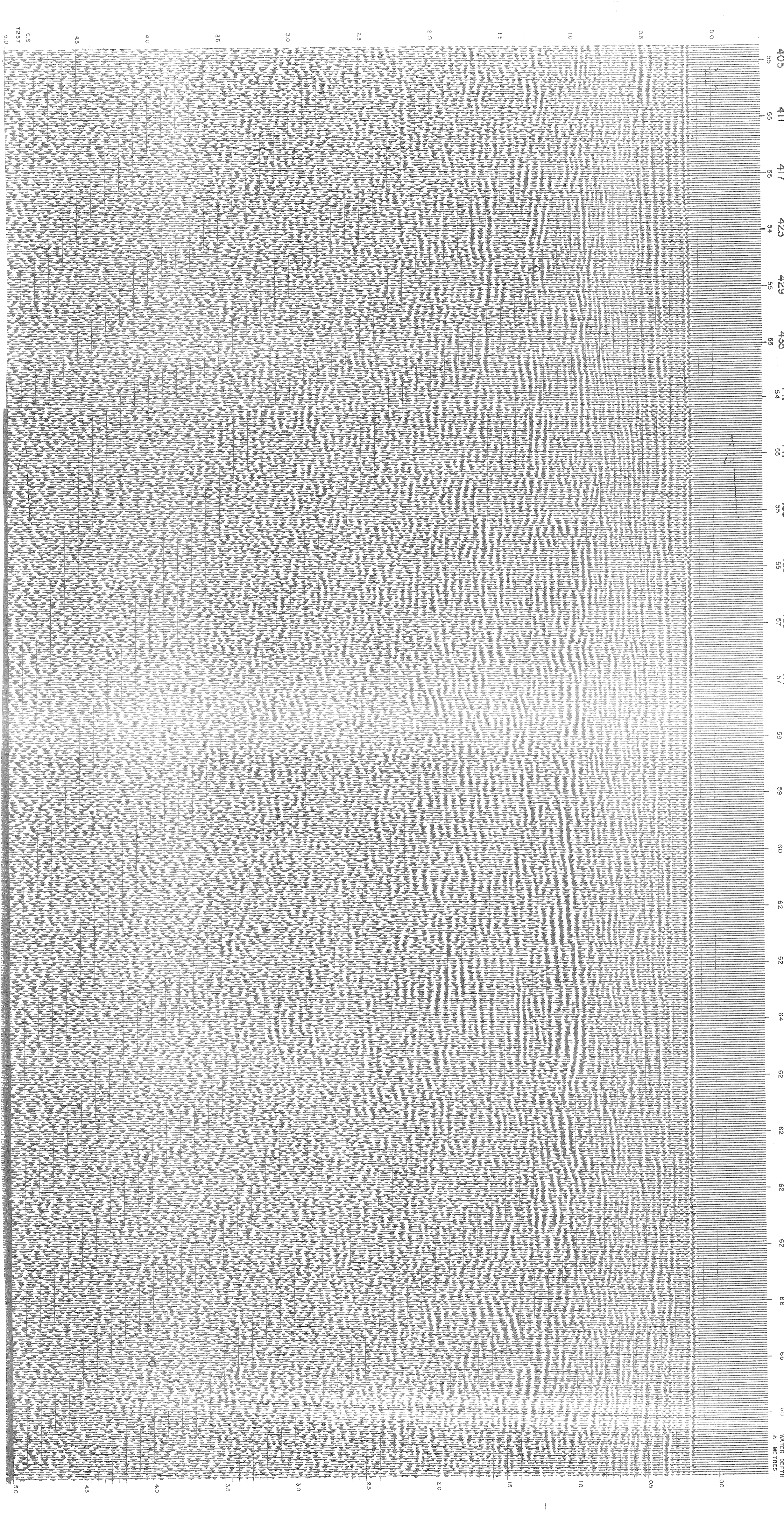
M - ITSI 5112

SOUTHWEST

INTERSECTION
LINE S.P.
C-1042 874

INTERSECTION
LINE S.P.
C-515 1166

WATER DEPTH
IN METERS



WATER DEPTH
IN METERS